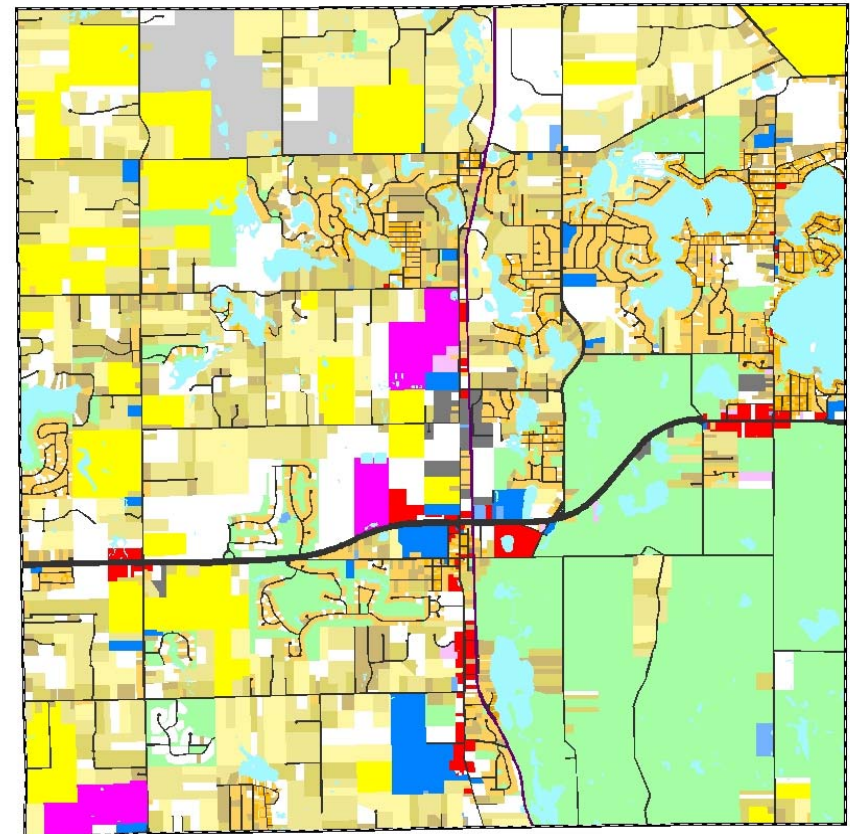
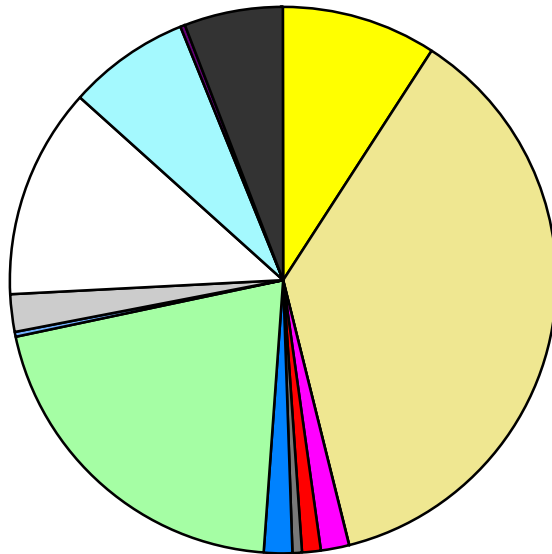


Land Use	Area (ac.)	Area (%)	Parcels	Parcels (%)
Agricultural	2,115.8	9.1%	51	0.7%
Single Family Residential	8,538.0	36.9%	6,061	81.4%
Multiple Family	45.0	0.2%	14	0.2%
Mobile Home Park	373.4	1.6%	6	0.1%
Commercial/Office	234.2	1.0%	134	1.8%
Industrial	137.6	0.6%	40	0.5%
Public/Institutional	387.8	1.7%	43	0.6%
Recreation/Conservation	4,787.2	20.7%	229	3.1%
Transp./Utility/Comm.	50.5	0.2%	18	0.2%
Extractive	512.8	2.2%	2	0.0%
Vacant	2,882.2	12.5%	850	11.4%
Water	1,679.2	7.3%		
Railroad Right-of-Way	72.6	0.3%		
Road Right-of-Way	1,333.4	5.8%		
<b>Total</b>	<b>23,149.7</b>	<b>100.0%</b>	<b>7,448</b>	<b>100.0%</b>

Single Family By Lot Size	Area (ac.)	Area (%)	Parcels	Parcels (%)
10 acres or greater	1,810.6	21.2%	116	1.9%
5 to 9.9 acres	2,184.1	25.6%	271	4.5%
2.5 to 4.9 acres	1,551.4	18.2%	417	6.9%
1 to 2.4 acres	985.3	11.5%	593	9.8%
14,000 to 43,559 sq. ft.	1,709.4	20.0%	3,274	54.0%
8,000 to 13,999 sq. ft.	225.1	2.6%	894	14.8%
Less than 8,000 sq. ft.	71.9	0.8%	496	8.2%
More than one unit per parcel				
<b>Single Family Sub-total</b>	<b>8,538.0</b>	<b>100.0%</b>	<b>6,061</b>	<b>100.0%</b>

### Land Use by Area

- Agricultural
- Single Family Residential
- Multiple Family
- Mobile Home Park
- Commercial/Office
- Industrial
- Public/Institutional
- Recreation/Conservation
- Transp./Utility/Comm.
- Extractive
- Vacant
- Water
- Railroad Right-of-Way
- Road Right-of-Way



For more information, maps, or questions about this data, please contact the Oakland County One Stop Shop at (248) 858-0720.