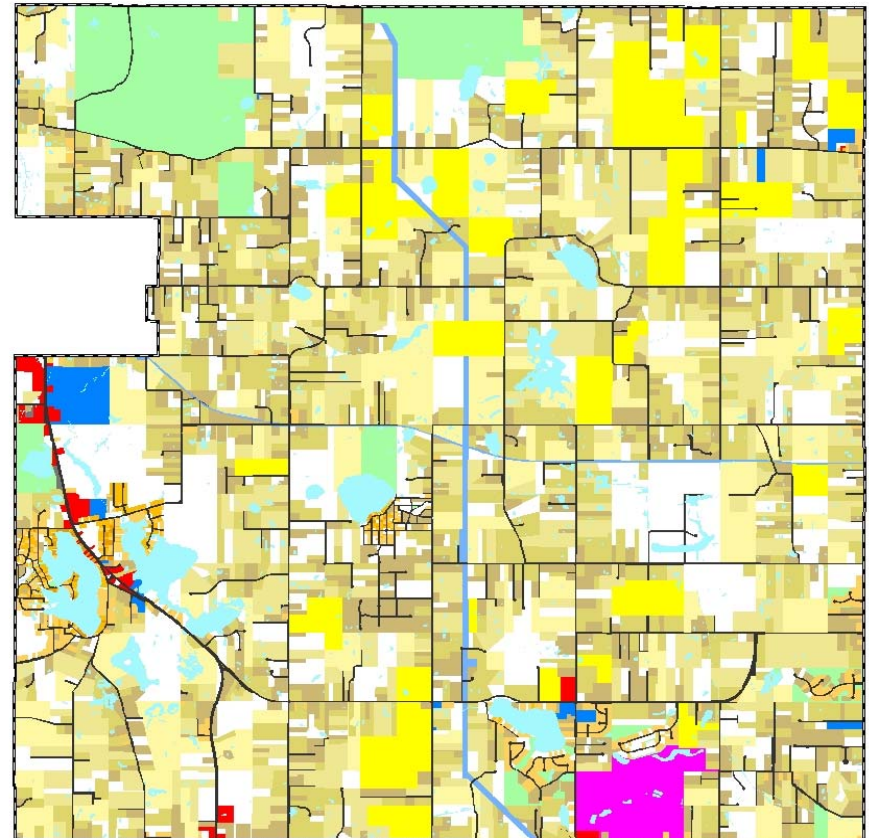
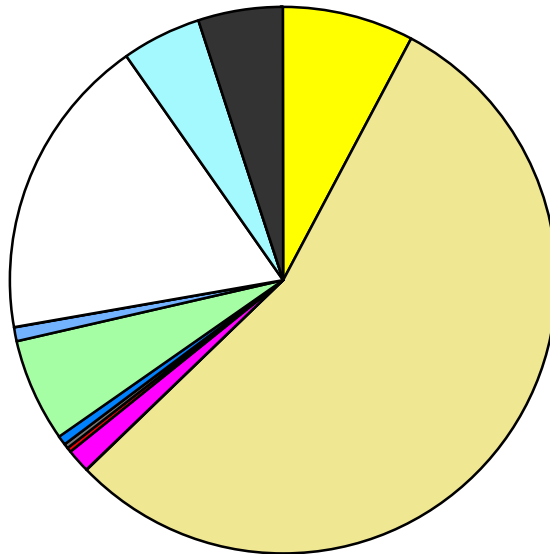


Land Use	Area (ac.)	Area (%)	Parcels	Parcels (%)
Agricultural	1,765.2	7.9%	54	1.0%
Single Family Residential	12,309.8	55.0%	3,919	75.4%
Multiple Family				
Mobile Home Park	272.0	1.2%	4	0.1%
Commercial/Office	109.7	0.5%	60	1.2%
Industrial	5.3	0.0%	6	0.1%
Public/Institutional	174.8	0.8%	18	0.3%
Recreation/Conservation	1,343.0	6.0%	186	3.6%
Transp./Utility/Comm.	194.2	0.9%	10	0.2%
Extractive				
Vacant	4,039.0	18.0%	942	18.1%
Water	1,039.4	4.6%		
Railroad Right-of-Way				
Road Right-of-Way	1,135.2	5.1%		
Total	22,387.6	100.0%	5,199	100.0%

Single Family By Lot Size	Area (ac.)	Area (%)	Parcels	Parcels (%)
10 acres or greater	2,610.5	21.2%	151	3.9%
5 to 9.9 acres	3,331.4	27.1%	431	11.0%
2.5 to 4.9 acres	3,283.2	26.7%	917	23.4%
1 to 2.4 acres	2,596.9	21.1%	1,272	32.5%
14,000 to 43,559 sq. ft.	386.5	3.1%	663	16.9%
8,000 to 13,999 sq. ft.	81.5	0.7%	340	8.7%
Less than 8,000 sq. ft.	19.8	0.2%	145	3.7%
More than one unit per parcel				
Single Family Sub-total	12,309.8	100.0%	3,919	100.0%

Land Use by Area

- Agricultural
- Single Family Residential
- Multiple Family
- Mobile Home Park
- Commercial/Office
- Industrial
- Public/Institutional
- Recreation/Conservation
- Transp./Utility/Comm.
- Extractive
- Vacant
- Water
- Railroad Right-of-Way
- Road Right-of-Way



For more information, maps, or questions about this data, please contact the Oakland County One Stop Shop at (248) 858-0720.