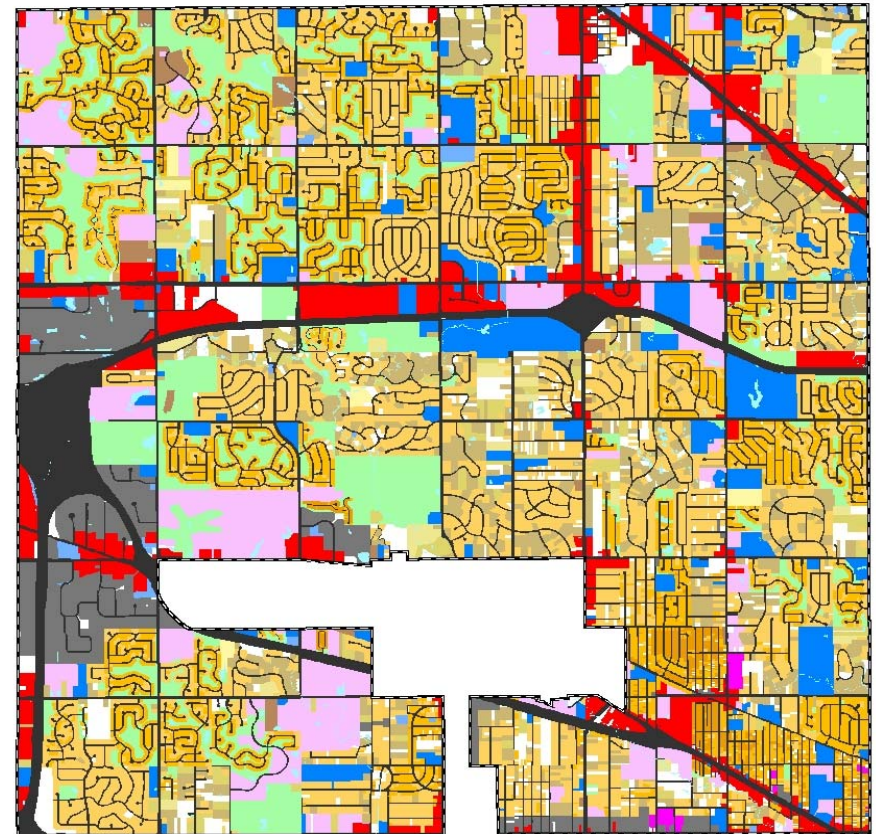
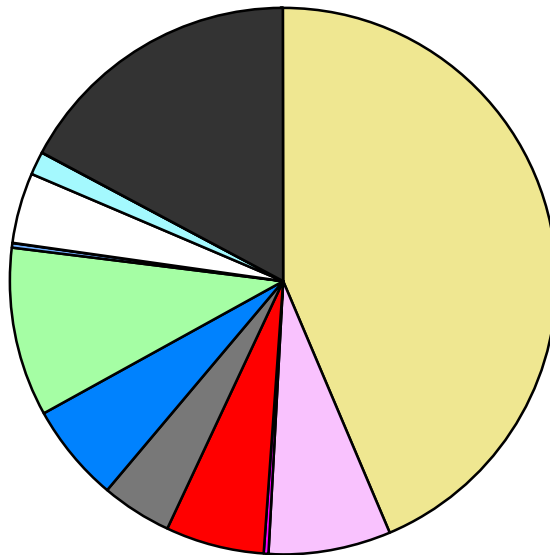


Land Use	Area (ac.)	Area (%)	Parcels	Parcels (%)
Agricultural				
Single Family Residential	9,280.3	43.6%	19,967	87.6%
Multiple Family	1,540.8	7.2%	158	0.7%
Mobile Home Park	38.2	0.2%	9	0.0%
Commercial/Office	1,262.1	5.9%	628	2.8%
Industrial	884.8	4.2%	382	1.7%
Public/Institutional	1,245.0	5.8%	163	0.7%
Recreation/Conservation	2,122.5	10.0%	362	1.6%
Transp./Utility/Comm.	80.1	0.4%	40	0.2%
Extractive				
Vacant	911.9	4.3%	1,079	4.7%
Water	244.5	1.1%		
Railroad Right-of-Way				
Road Right-of-Way	3,693.7	17.3%		
Total	21,303.9	100.0%	22,788	100.0%

Single Family By Lot Size	Area (ac.)	Area (%)	Parcels	Parcels (%)
10 acres or greater	73.9	0.8%	6	0.0%
5 to 9.9 acres	154.1	1.7%	24	0.1%
2.5 to 4.9 acres	440.9	4.8%	125	0.6%
1 to 2.4 acres	1,530.2	16.5%	1,052	5.3%
14,000 to 43,559 sq. ft.	4,488.1	48.4%	8,818	44.2%
8,000 to 13,999 sq. ft.	2,239.8	24.1%	8,544	42.8%
Less than 8,000 sq. ft.	197.1	2.1%	1,313	6.6%
More than one unit per parcel	156.1	1.7%	85	0.4%
Single Family Sub-total	9,280.3	100.0%	19,967	100.0%

Land Use by Area

- Agricultural
- Single Family Residential
- Multiple Family
- Mobile Home Park
- Commercial/Office
- Industrial
- Public/Institutional
- Recreation/Conservation
- Transp./Utility/Comm.
- Extractive
- Vacant
- Water
- Railroad Right-of-Way
- Road Right-of-Way



For more information, maps, or questions about this data, please contact the Oakland County One Stop Shop at (248) 858-0720.