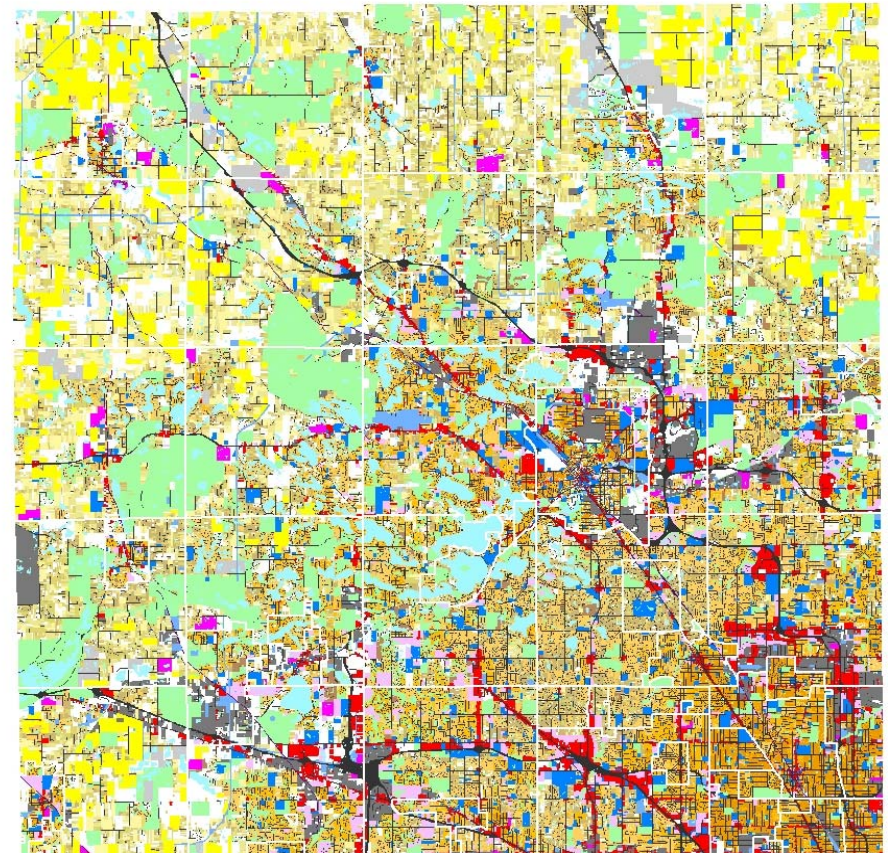
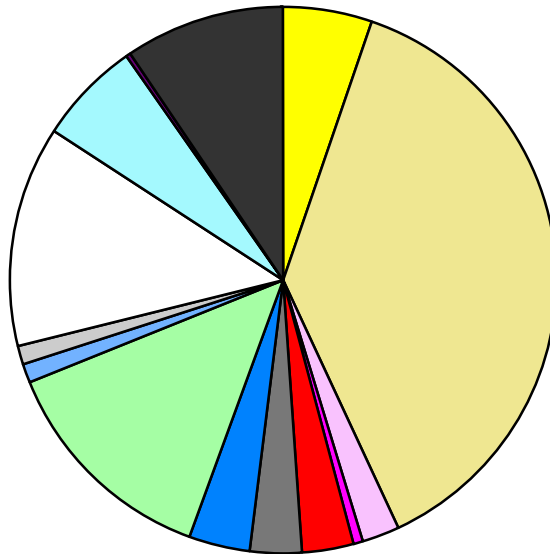


| Land Use | Area (ac.) | Area (%) | Parcels | Parcels (%) |
|---------------------------|------------------|---------------|----------------|---------------|
| Agricultural | 29,852.0 | 5.1% | 714 | 0.2% |
| Single Family Residential | 220,840.9 | 38.0% | 344,168 | 83.2% |
| Multiple Family | 12,448.8 | 2.1% | 2,436 | 0.6% |
| Mobile Home Park | 3,476.4 | 0.6% | 247 | 0.1% |
| Commercial/Office | 17,309.5 | 3.0% | 12,553 | 3.0% |
| Industrial | 17,988.2 | 3.1% | 5,742 | 1.4% |
| Public/Institutional | 19,936.5 | 3.4% | 3,049 | 0.7% |
| Recreation/Conservation | 78,142.0 | 13.5% | 6,184 | 1.5% |
| Transp./Utility/Comm. | 6,367.7 | 1.1% | 1,198 | 0.3% |
| Extractive | 6,408.7 | 1.1% | 91 | 0.0% |
| Vacant | 76,163.3 | 13.1% | 37,376 | 9.0% |
| Water | 35,028.5 | 6.0% | | |
| Railroad Right-of-Way | 1,100.4 | 0.2% | | |
| Road Right-of-Way | 55,476.6 | 9.6% | | |
| Total | 580,539.5 | 100.0% | 413,758 | 100.0% |

| Single Family By Lot Size | Area (ac.) | Area (%) | Parcels | Parcels (%) |
|--------------------------------|------------------|---------------|----------------|---------------|
| 10 acres or greater | 35,119.4 | 15.9% | 1,973 | 0.6% |
| 5 to 9.9 acres | 29,426.1 | 13.3% | 3,833 | 1.1% |
| 2.5 to 4.9 acres | 27,284.8 | 12.4% | 7,624 | 2.2% |
| 1 to 2.4 acres | 34,313.4 | 15.5% | 22,130 | 6.4% |
| 14,000 to 43,559 sq. ft. | 53,159.3 | 24.1% | 105,446 | 30.6% |
| 8,000 to 13,999 sq. ft. | 25,608.1 | 11.6% | 103,186 | 30.0% |
| Less than 8,000 sq. ft. | 13,601.7 | 6.2% | 99,573 | 28.9% |
| More than one unit per parcel | 2,328.2 | 1.1% | 403 | 0.1% |
| Single Family Sub-total | 220,840.9 | 100.0% | 344,168 | 100.0% |

Land Use by Area

- Agricultural
- Single Family Residential
- Multiple Family
- Mobile Home Park
- Commercial/Office
- Industrial
- Public/Institutional
- Recreation/Conservation
- Transp./Utility/Comm.
- Extractive
- Vacant
- Water
- Railroad Right-of-Way
- Road Right-of-Way



For more information, maps, or questions about this data, please contact the Oakland County One Stop Shop at (248) 858-0720.