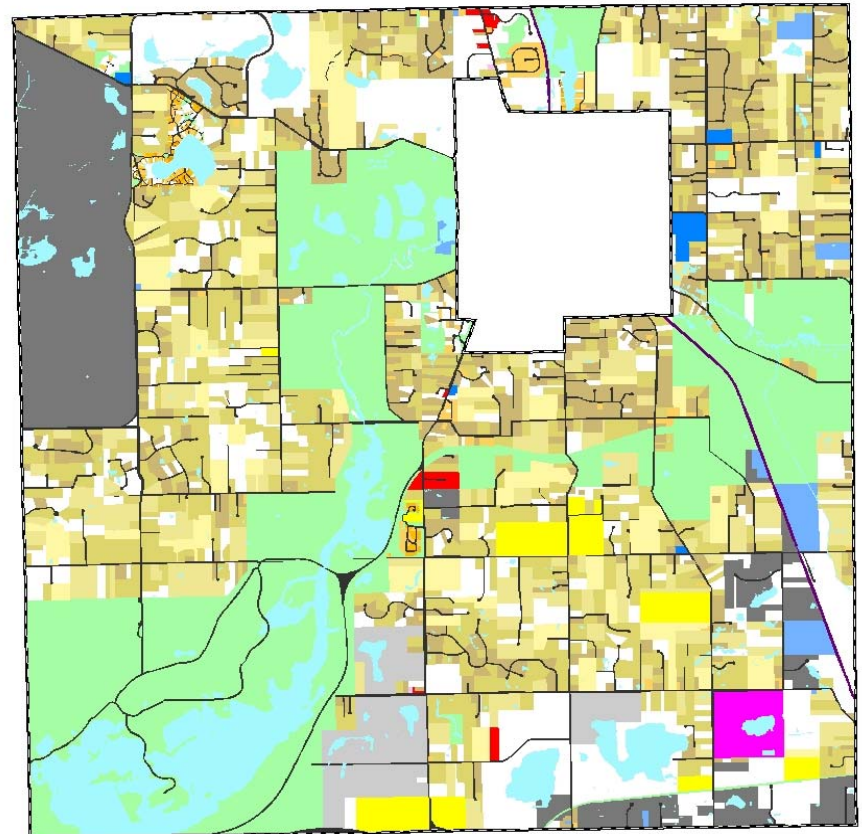
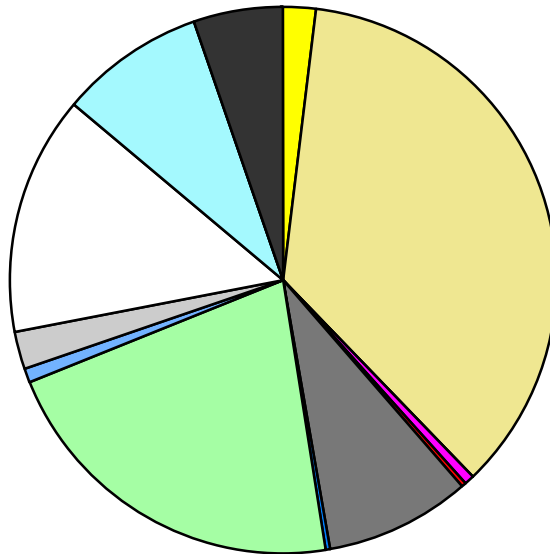


Land Use	Area (ac.)	Area (%)	Parcels	Parcels (%)
Agricultural	377.5	1.8%	10	0.3%
Single Family Residential	7,523.7	36.0%	2,705	74.8%
Multiple Family	2.0	0.0%	2	0.1%
Mobile Home Park	134.1	0.6%	2	0.1%
Commercial/Office	49.8	0.2%	13	0.4%
Industrial	1,760.3	8.4%	91	2.5%
Public/Institutional	65.5	0.3%	6	0.2%
Recreation/Conservation	4,459.2	21.3%	113	3.1%
Transp./Utility/Comm.	190.3	0.9%	14	0.4%
Extractive	495.1	2.4%	8	0.2%
Vacant	2,951.4	14.1%	653	18.1%
Water	1,758.0	8.4%		
Railroad Right-of-Way	47.5	0.2%		
Road Right-of-Way	1,078.1	5.2%		
Total	20,892.6	100.0%	3,617	100.0%

Single Family By Lot Size	Area (ac.)	Area (%)	Parcels	Parcels (%)
10 acres or greater	1,084.9	14.4%	71	2.6%
5 to 9.9 acres	1,571.5	20.9%	211	7.8%
2.5 to 4.9 acres	2,730.2	36.3%	810	29.9%
1 to 2.4 acres	1,918.6	25.5%	1,153	42.6%
14,000 to 43,559 sq. ft.	182.2	2.4%	284	10.5%
8,000 to 13,999 sq. ft.	28.2	0.4%	110	4.1%
Less than 8,000 sq. ft.	8.1	0.1%	66	2.4%
More than one unit per parcel				
Single Family Sub-total	7,523.7	100.0%	2,705	100.0%

Land Use by Area

- Agricultural
- Single Family Residential
- Multiple Family
- Mobile Home Park
- Commercial/Office
- Industrial
- Public/Institutional
- Recreation/Conservation
- Transp./Utility/Comm.
- Extractive
- Vacant
- Water
- Railroad Right-of-Way
- Road Right-of-Way



For more information, maps, or questions about this data, please contact the Oakland County One Stop Shop at (248) 858-0720.