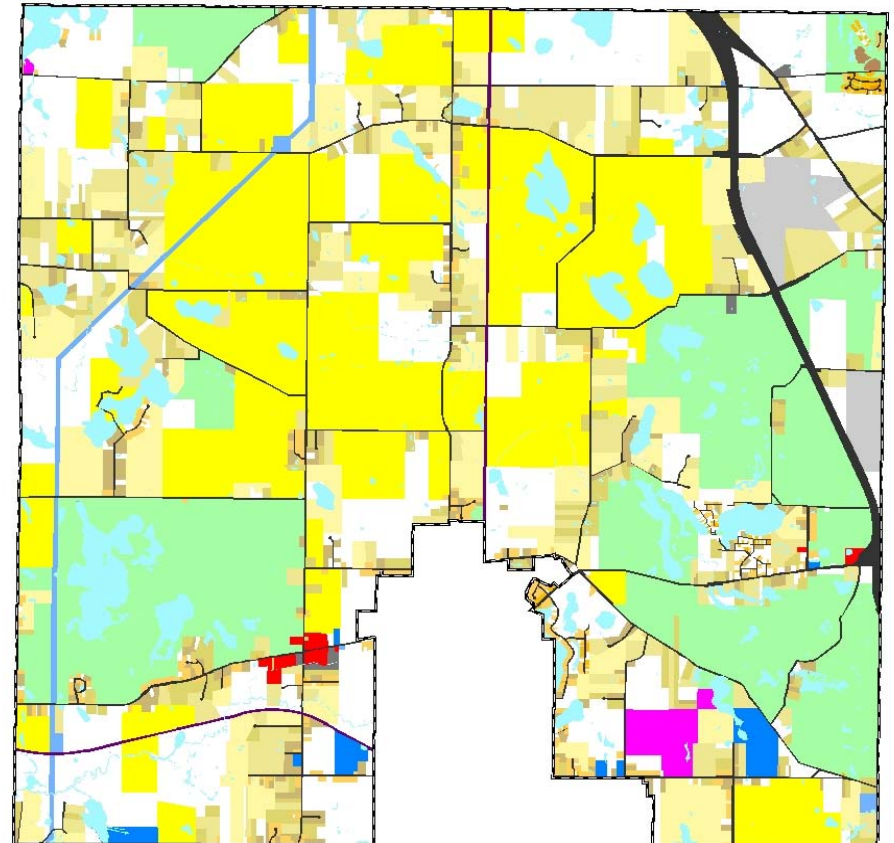
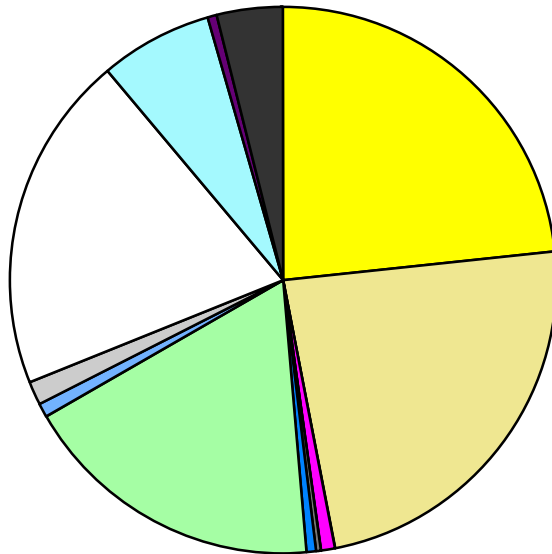


Land Use	Area (ac.)	Area (%)	Parcels	Parcels (%)
Agricultural	4,985.8	23.3%	91	4.2%
Single Family Residential	5,058.4	23.7%	1,457	66.7%
Multiple Family				
Mobile Home Park	138.0	0.6%	9	0.4%
Commercial/Office	51.8	0.2%	19	0.9%
Industrial	25.6	0.1%	6	0.3%
Public/Institutional	147.4	0.7%	9	0.4%
Recreation/Conservation	3,832.4	17.9%	43	2.0%
Transp./Utility/Comm.	169.2	0.8%	16	0.7%
Extractive	330.3	1.5%	6	0.3%
Vacant	4,227.2	19.8%	528	24.2%
Water	1,467.2	6.9%		
Railroad Right-of-Way	77.9	0.4%		
Road Right-of-Way	850.4	4.0%		
<b>Total</b>	<b>21,361.6</b>	<b>100.0%</b>	<b>2,184</b>	<b>100.0%</b>

Single Family By Lot Size	Area (ac.)	Area (%)	Parcels	Parcels (%)
10 acres or greater	2,007.4	39.7%	98	6.7%
5 to 9.9 acres	1,439.1	28.4%	187	12.8%
2.5 to 4.9 acres	800.7	15.8%	213	14.6%
1 to 2.4 acres	454.5	9.0%	291	20.0%
14,000 to 43,559 sq. ft.	308.0	6.1%	506	34.7%
8,000 to 13,999 sq. ft.	34.7	0.7%	138	9.5%
Less than 8,000 sq. ft.	3.8	0.1%	23	1.6%
More than one unit per parcel	10.2	0.2%	1	0.1%
<b>Single Family Sub-total</b>	<b>5,058.4</b>	<b>100.0%</b>	<b>1,457</b>	<b>100.0%</b>

#### Land Use by Area

- Agricultural
- Single Family Residential
- Multiple Family
- Mobile Home Park
- Commercial/Office
- Industrial
- Public/Institutional
- Recreation/Conservation
- Transp./Utility/Comm.
- Extractive
- Vacant
- Water
- Railroad Right-of-Way
- Road Right-of-Way



For more information, maps, or questions about this data, please contact the Oakland County One Stop Shop at (248) 858-0720.