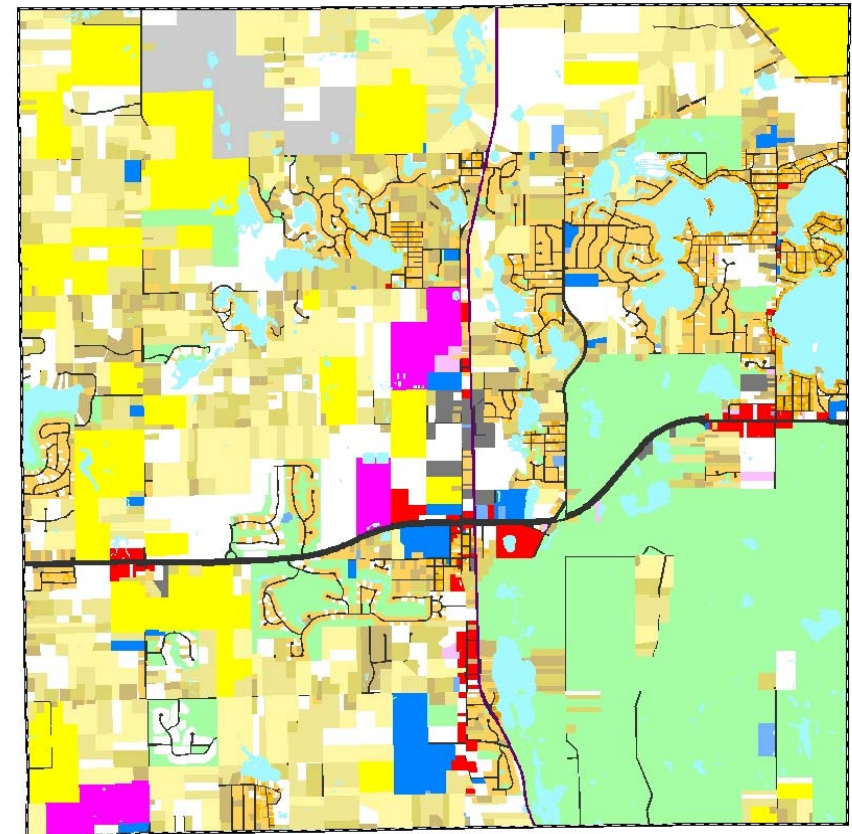
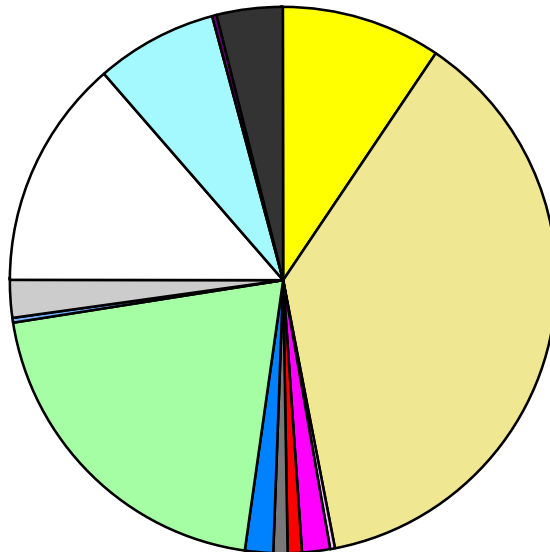


Land Use	Area (ac.)	Area (%)	Parcels	Parcels (%)
Agricultural	2,213.8	9.6%	51	0.7%
Single Family Residential	8,656.6	37.4%	5,975	80.6%
Multiple Family	45.2	0.2%	14	0.2%
Mobile Home Park	377.5	1.6%	6	0.1%
Commercial/Office	236.8	1.0%	126	1.7%
Industrial	149.2	0.6%	44	0.6%
Public/Institutional	380.8	1.6%	38	0.5%
Recreation/Conservation	4,756.5	20.5%	182	2.5%
Transp./Utility/Comm.	55.6	0.2%	19	0.3%
Extractive	518.1	2.2%	2	0.0%
Vacant	3,117.9	13.5%	952	12.8%
Water	1,679.2	7.3%		
Railroad Right-of-Way	72.5	0.3%		
Road Right-of-Way	891.4	3.9%		
Total	23,151.2	100.0%	7,409	100.0%

Single Family By Lot Size	Area (ac.)	Area (%)	Parcels	Parcels (%)
10 acres or greater	2,691.4	31.1%	205	3.4%
5 to 9.9 acres	1,725.7	19.9%	254	4.3%
2.5 to 4.9 acres	1,348.9	15.6%	382	6.4%
1 to 2.4 acres	945.8	10.9%	573	9.6%
14,000 to 43,559 sq. ft.	1,650.5	19.1%	3,181	53.2%
8,000 to 13,999 sq. ft.	222.4	2.6%	885	14.8%
Less than 8,000 sq. ft.	71.8	0.8%	495	8.3%
More than one unit per parcel				
Single Family Sub-total	8,656.6	100.0%	5,975	100.0%

Land Use by Area

- Agricultural
- Single Family Residential
- Multiple Family
- Mobile Home Park
- Commercial/Office
- Industrial
- Public/Institutional
- Recreation/Conservation
- Transp./Utility/Comm.
- Extractive
- Vacant
- Water
- Railroad Right-of-Way
- Road Right-of-Way



For more information, maps, or questions about this data, please contact the Oakland County One Stop Shop at (248) 858-0720.