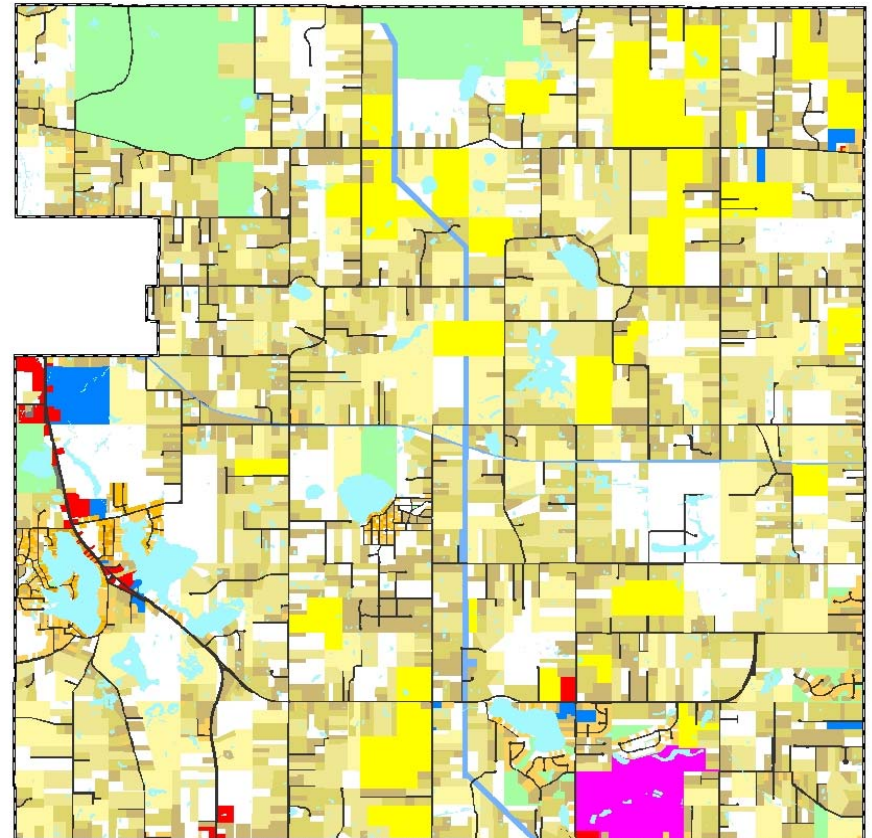
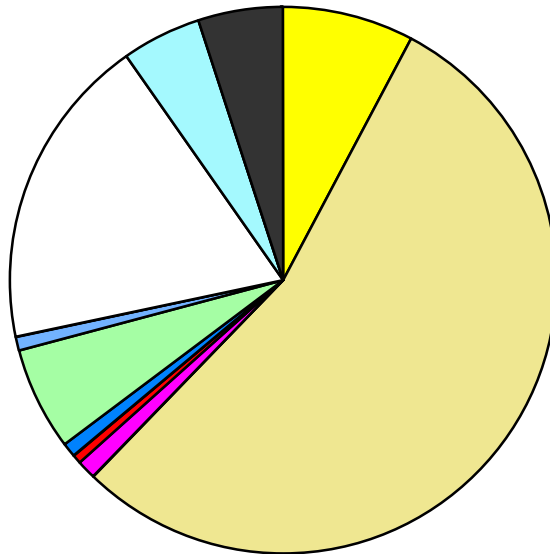


Land Use	Area (ac.)	Area (%)	Parcels	Parcels (%)
Agricultural	1,769.9	7.9%	56	1.1%
Single Family Residential	12,159.6	54.3%	3,846	74.4%
Multiple Family				
Mobile Home Park	272.0	1.2%	4	0.1%
Commercial/Office	109.4	0.5%	59	1.1%
Industrial	5.3	0.0%	6	0.1%
Public/Institutional	174.8	0.8%	18	0.3%
Recreation/Conservation	1,343.0	6.0%	186	3.6%
Transp./Utility/Comm.	194.4	0.9%	10	0.2%
Extractive				
Vacant	4,195.9	18.7%	981	19.0%
Water	1,039.4	4.6%		
Railroad Right-of-Way				
Road Right-of-Way	1,123.8	5.0%		
<b>Total</b>	<b>22,387.6</b>	<b>100.0%</b>	<b>5,166</b>	<b>100.0%</b>

Single Family By Lot Size	Area (ac.)	Area (%)	Parcels	Parcels (%)
10 acres or greater	2,582.4	21.2%	151	3.9%
5 to 9.9 acres	3,371.1	27.7%	435	11.3%
2.5 to 4.9 acres	3,254.9	26.8%	910	23.7%
1 to 2.4 acres	2,469.4	20.3%	1,213	31.5%
14,000 to 43,559 sq. ft.	380.6	3.1%	652	17.0%
8,000 to 13,999 sq. ft.	81.3	0.7%	339	8.8%
Less than 8,000 sq. ft.	20.0	0.2%	146	3.8%
More than one unit per parcel				
<b>Single Family Sub-total</b>	<b>12,159.6</b>	<b>100.0%</b>	<b>3,846</b>	<b>100.0%</b>

### Land Use by Area

- Agricultural
- Single Family Residential
- Multiple Family
- Mobile Home Park
- Commercial/Office
- Industrial
- Public/Institutional
- Recreation/Conservation
- Transp./Utility/Comm.
- Extractive
- Vacant
- Water
- Railroad Right-of-Way
- Road Right-of-Way



For more information, maps, or questions about this data, please contact the Oakland County One Stop Shop at (248) 858-0720.