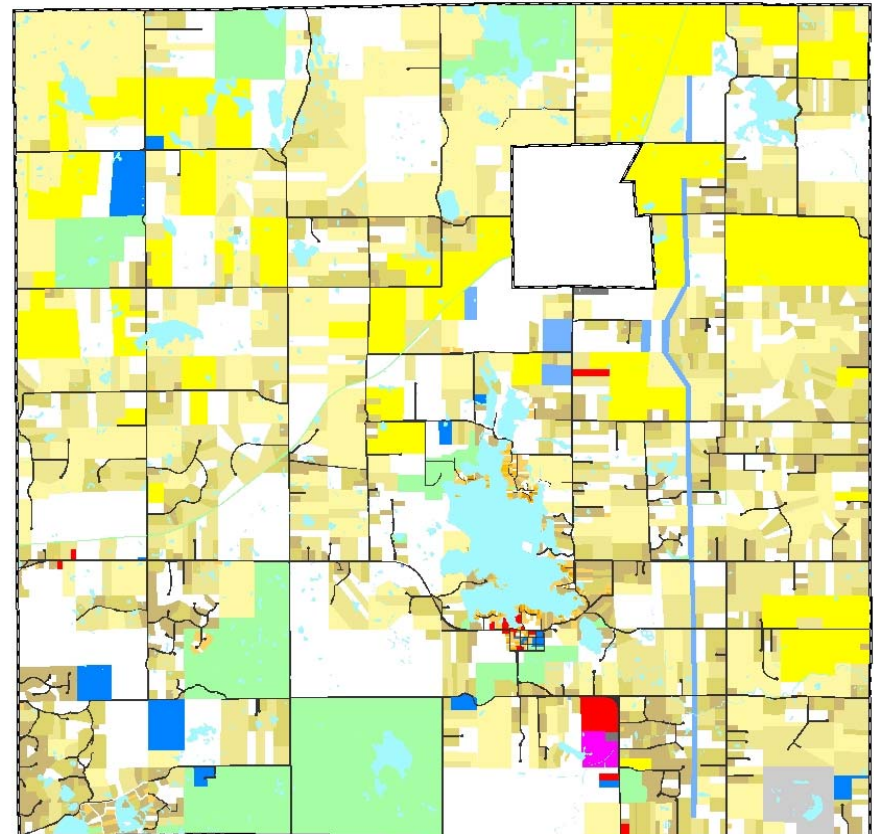
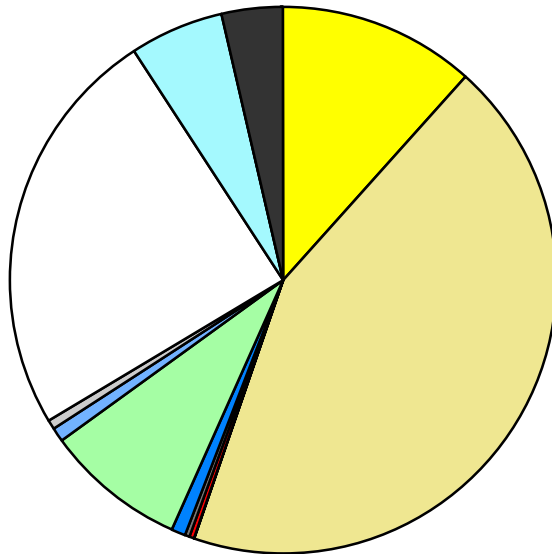


Land Use	Area (ac.)	Area (%)	Parcels	Parcels (%)
Agricultural	2,627.8	11.5%	81	2.9%
Single Family Residential	9,957.5	43.7%	1,930	69.0%
Multiple Family				
Mobile Home Park	36.7	0.2%	1	0.0%
Commercial/Office	69.3	0.3%	16	0.6%
Industrial	13.6	0.1%	2	0.1%
Public/Institutional	236.1	1.0%	19	0.7%
Recreation/Conservation	1,873.0	8.2%	57	2.0%
Transp./Utility/Comm.	201.6	0.9%	11	0.4%
Extractive	134.6	0.6%	3	0.1%
Vacant	5,534.0	24.3%	679	24.3%
Water	1,279.8	5.6%		
Railroad Right-of-Way				
Road Right-of-Way	826.7	3.6%		
Total	22,790.7	100.0%	2,799	100.0%

Single Family By Lot Size	Area (ac.)	Area (%)	Parcels	Parcels (%)
10 acres or greater	4,282.2	43.0%	234	12.1%
5 to 9.9 acres	2,865.6	28.8%	351	18.2%
2.5 to 4.9 acres	1,609.6	16.2%	448	23.2%
1 to 2.4 acres	1,062.7	10.7%	552	28.6%
14,000 to 43,559 sq. ft.	108.8	1.1%	187	9.7%
8,000 to 13,999 sq. ft.	16.9	0.2%	67	3.5%
Less than 8,000 sq. ft.	11.7	0.1%	91	4.7%
More than one unit per parcel				
Single Family Sub-total	9,957.5	100.0%	1,930	100.0%

Land Use by Area

- Agricultural
- Single Family Residential
- Multiple Family
- Mobile Home Park
- Commercial/Office
- Industrial
- Public/Institutional
- Recreation/Conservation
- Transp./Utility/Comm.
- Extractive
- Vacant
- Water
- Railroad Right-of-Way
- Road Right-of-Way



For more information, maps, or questions about this data, please contact the Oakland County One Stop Shop at (248) 858-0720.