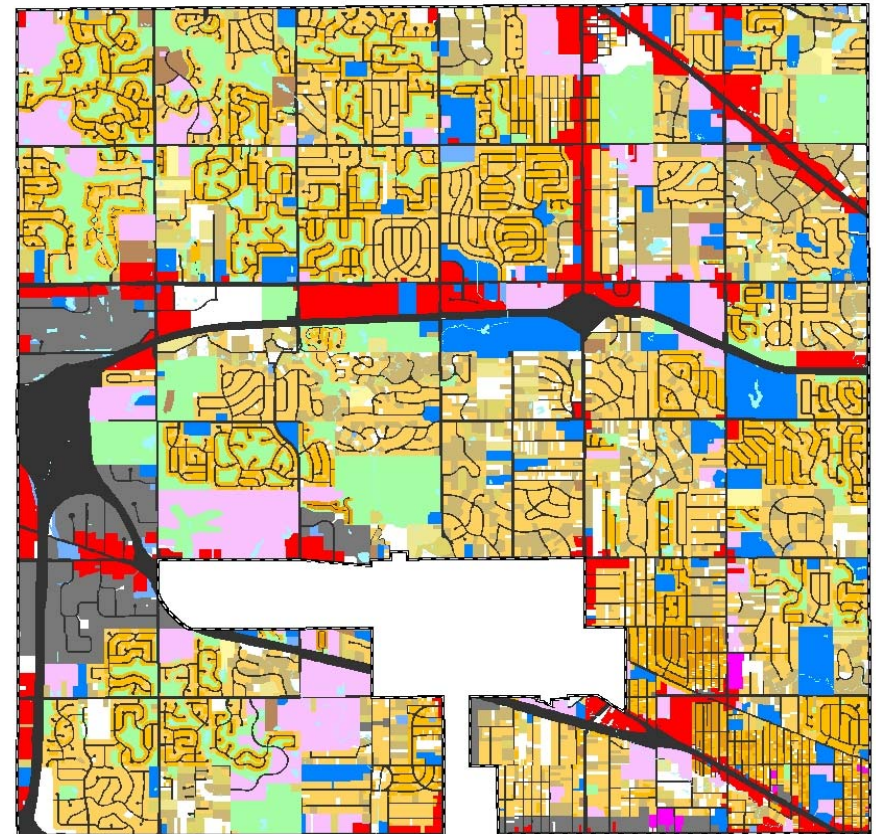
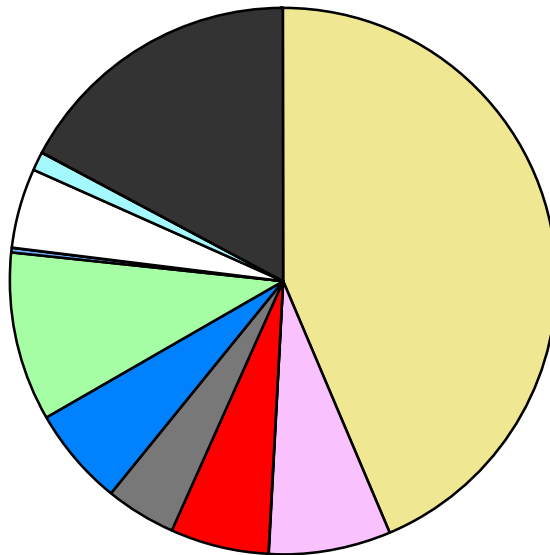


| Land Use | Area (ac.) | Area (%) | Parcels | Parcels (%) |
|---------------------------|-----------------|---------------|---------------|---------------|
| Agricultural | | | | |
| Single Family Residential | 9,262.2 | 43.5% | 19,905 | 87.5% |
| Multiple Family | 1,545.1 | 7.3% | 158 | 0.7% |
| Mobile Home Park | 38.6 | 0.2% | 9 | 0.0% |
| Commercial/Office | 1,222.5 | 5.7% | 626 | 2.8% |
| Industrial | 885.4 | 4.2% | 383 | 1.7% |
| Public/Institutional | 1,243.6 | 5.8% | 161 | 0.7% |
| Recreation/Conservation | 2,121.1 | 10.0% | 343 | 1.5% |
| Transp./Utility/Comm. | 84.0 | 0.4% | 42 | 0.2% |
| Extractive | | | | |
| Vacant | 988.0 | 4.6% | 1,133 | 5.0% |
| Water | 244.5 | 1.1% | | |
| Railroad Right-of-Way | | | | |
| Road Right-of-Way | 3,669.1 | 17.2% | | |
| Total | 21,303.9 | 100.0% | 22,760 | 100.0% |

| Single Family By Lot Size | Area (ac.) | Area (%) | Parcels | Parcels (%) |
|--------------------------------|----------------|---------------|---------------|---------------|
| 10 acres or greater | 74.3 | 0.8% | 6 | 0.0% |
| 5 to 9.9 acres | 158.4 | 1.7% | 24 | 0.1% |
| 2.5 to 4.9 acres | 435.5 | 4.7% | 123 | 0.6% |
| 1 to 2.4 acres | 1,541.1 | 16.6% | 1,060 | 5.3% |
| 14,000 to 43,559 sq. ft. | 4,470.0 | 48.3% | 8,787 | 44.1% |
| 8,000 to 13,999 sq. ft. | 2,230.2 | 24.1% | 8,510 | 42.8% |
| Less than 8,000 sq. ft. | 196.6 | 2.1% | 1,310 | 6.6% |
| More than one unit per parcel | 156.1 | 1.7% | 85 | 0.4% |
| Single Family Sub-total | 9,262.2 | 100.0% | 19,905 | 100.0% |

Land Use by Area

- Agricultural
- Single Family Residential
- Multiple Family
- Mobile Home Park
- Commercial/Office
- Industrial
- Public/Institutional
- Recreation/Conservation
- Transp./Utility/Comm.
- Extractive
- Vacant
- Water
- Railroad Right-of-Way
- Road Right-of-Way



For more information, maps, or questions about this data, please contact the Oakland County One Stop Shop at (248) 858-0720.