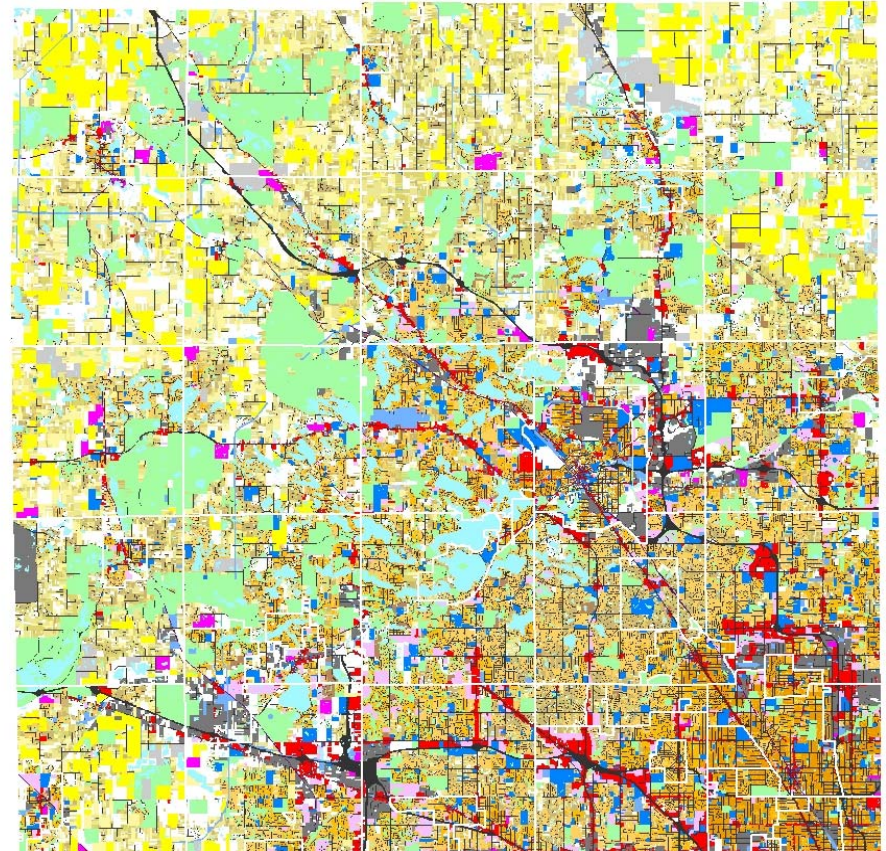
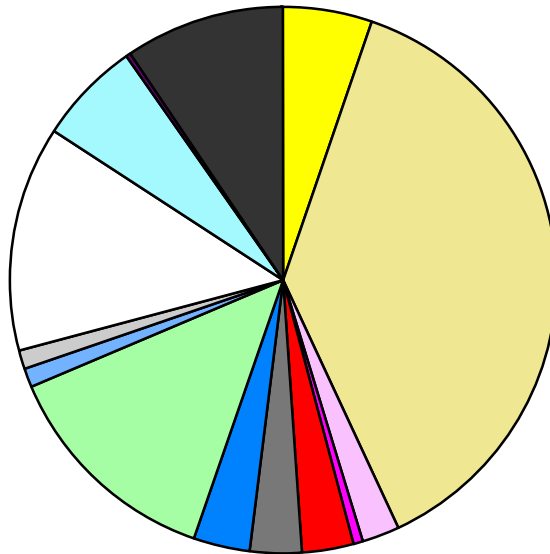


Land Use	Area (ac.)	Area (%)	Parcels	Parcels (%)
Agricultural	30,437.3	5.2%	701	0.2%
Single Family Residential	220,222.1	37.9%	341,613	83.3%
Multiple Family	12,273.5	2.1%	2,372	0.6%
Mobile Home Park	3,493.5	0.6%	246	0.1%
Commercial/Office	17,114.2	2.9%	12,575	3.1%
Industrial	17,723.1	3.1%	5,666	1.4%
Public/Institutional	19,706.7	3.4%	3,047	0.7%
Recreation/Conservation	77,349.1	13.3%	5,991	1.5%
Transp./Utility/Comm.	6,367.9	1.1%	1,179	0.3%
Extractive	6,359.5	1.1%	89	0.0%
Vacant	78,369.2	13.5%	36,764	9.0%
Water	35,023.6	6.0%		
Railroad Right-of-Way	1,108.8	0.2%		
Road Right-of-Way	54,989.7	9.5%		
Total	580,538.1	100.0%	410,243	100.0%

Single Family By Lot Size	Area (ac.)	Area (%)	Parcels	Parcels (%)
10 acres or greater	35,920.8	16.3%	2,002	0.6%
5 to 9.9 acres	29,395.8	13.3%	3,828	1.1%
2.5 to 4.9 acres	27,179.1	12.3%	7,579	2.2%
1 to 2.4 acres	33,961.7	15.4%	21,900	6.4%
14,000 to 43,559 sq. ft.	52,675.1	23.9%	104,432	30.6%
8,000 to 13,999 sq. ft.	25,383.0	11.5%	102,273	29.9%
Less than 8,000 sq. ft.	13,558.9	6.2%	99,311	29.1%
More than one unit per parcel	2,147.7	1.0%	288	0.1%
Single Family Sub-total	220,222.1	100.0%	341,613	100.0%

Land Use by Area

- Agricultural
- Single Family Residential
- Multiple Family
- Mobile Home Park
- Commercial/Office
- Industrial
- Public/Institutional
- Recreation/Conservation
- Transp./Utility/Comm.
- Extractive
- Vacant
- Water
- Railroad Right-of-Way
- Road Right-of-Way



For more information, maps, or questions about this data, please contact the Oakland County One Stop Shop at (248) 858-0720.