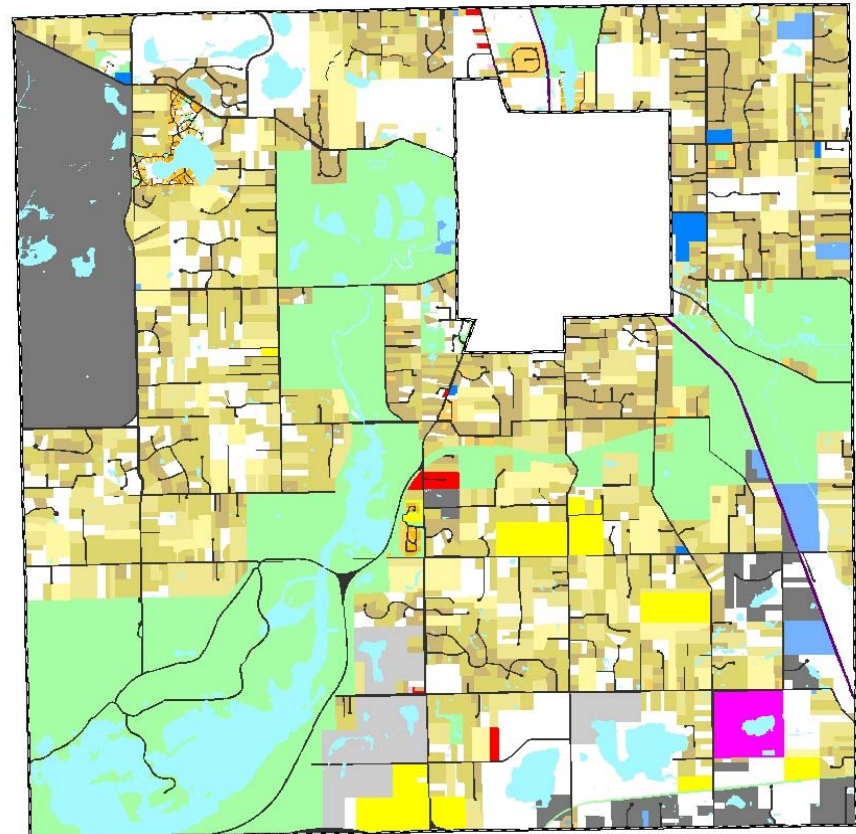
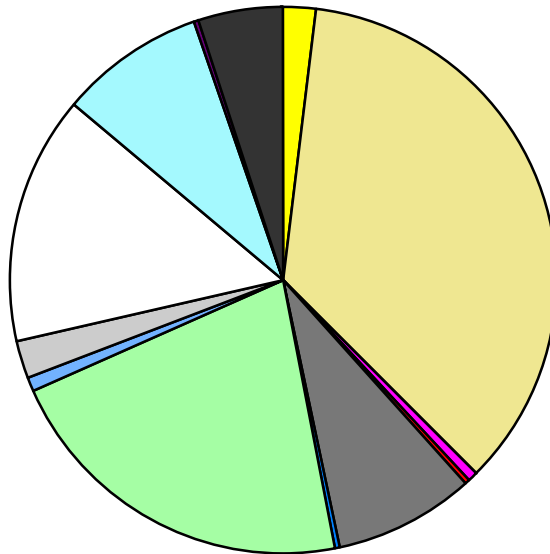


Land Use	Area (ac.)	Area (%)	Parcels	Parcels (%)
Agricultural	413.9	2.0%	11	0.3%
Single Family Residential	7,413.4	35.5%	2,636	74.0%
Multiple Family	2.0	0.0%	2	0.1%
Mobile Home Park	134.1	0.6%	2	0.1%
Commercial/Office	42.2	0.2%	12	0.3%
Industrial	1,737.0	8.3%	87	2.4%
Public/Institutional	65.6	0.3%	6	0.2%
Recreation/Conservation	4,442.8	21.3%	109	3.1%
Transp./Utility/Comm.	190.3	0.9%	14	0.4%
Extractive	458.8	2.2%	7	0.2%
Vacant	3,115.1	14.9%	676	19.0%
Water	1,758.0	8.4%		
Railroad Right-of-Way	47.5	0.2%		
Road Right-of-Way	1,070.1	5.1%		
Total	20,890.7	100.0%	3,562	100.0%

Single Family By Lot Size	Area (ac.)	Area (%)	Parcels	Parcels (%)
10 acres or greater	1,071.5	14.5%	70	2.7%
5 to 9.9 acres	1,574.3	21.2%	210	8.0%
2.5 to 4.9 acres	2,689.9	36.3%	793	30.1%
1 to 2.4 acres	1,868.7	25.2%	1,115	42.3%
14,000 to 43,559 sq. ft.	172.9	2.3%	272	10.3%
8,000 to 13,999 sq. ft.	28.0	0.4%	109	4.1%
Less than 8,000 sq. ft.	8.2	0.1%	67	2.5%
More than one unit per parcel				
Single Family Sub-total	7,413.4	100.0%	2,636	100.0%

Land Use by Area

- Agricultural
- Single Family Residential
- Multiple Family
- Mobile Home Park
- Commercial/Office
- Industrial
- Public/Institutional
- Recreation/Conservation
- Transp./Utility/Comm.
- Extractive
- Vacant
- Water
- Railroad Right-of-Way
- Road Right-of-Way



For more information, maps, or questions about this data, please contact the Oakland County One Stop Shop at (248) 858-0720.