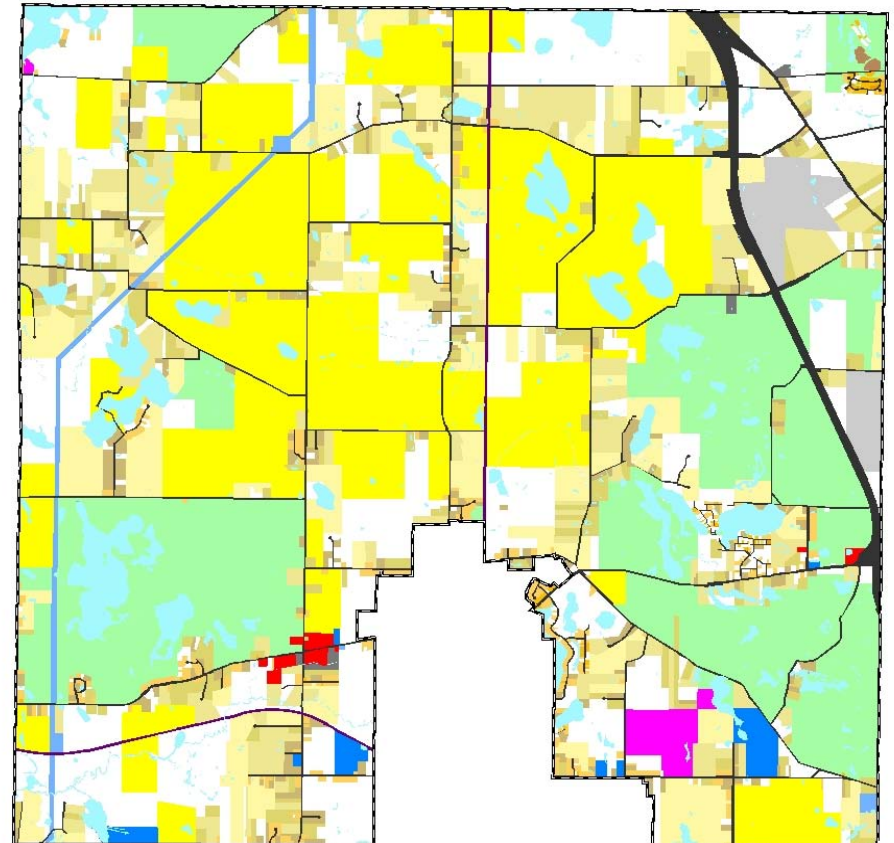
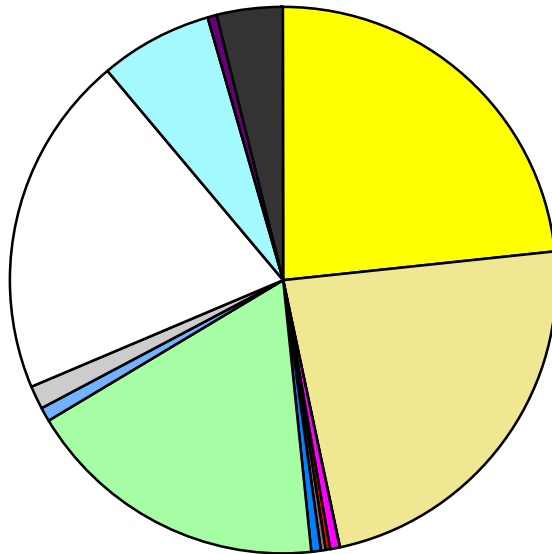


Land Use	Area (ac.)	Area (%)	Parcels	Parcels (%)
Agricultural	5,010.9	23.5%	91	4.2%
Single Family Residential	4,966.3	23.2%	1,418	65.0%
Multiple Family				
Mobile Home Park	138.0	0.6%	9	0.4%
Commercial/Office	52.4	0.2%	19	0.9%
Industrial	25.6	0.1%	6	0.3%
Public/Institutional	147.4	0.7%	9	0.4%
Recreation/Conservation	3,839.7	18.0%	48	2.2%
Transp./Utility/Comm.	169.2	0.8%	16	0.7%
Extractive	330.3	1.5%	6	0.3%
Vacant	4,287.1	20.1%	560	25.7%
Water	1,467.2	6.9%		
Railroad Right-of-Way	77.9	0.4%		
Road Right-of-Way	850.8	4.0%		
Total	21,362.7	100.0%	2,182	100.0%

Single Family By Lot Size	Area (ac.)	Area (%)	Parcels	Parcels (%)
10 acres or greater	1,930.5	38.9%	94	6.6%
5 to 9.9 acres	1,452.3	29.2%	188	13.3%
2.5 to 4.9 acres	793.1	16.0%	212	15.0%
1 to 2.4 acres	439.9	8.9%	280	19.7%
14,000 to 43,559 sq. ft.	306.4	6.2%	503	35.5%
8,000 to 13,999 sq. ft.	30.5	0.6%	119	8.4%
Less than 8,000 sq. ft.	3.4	0.1%	21	1.5%
More than one unit per parcel	10.2	0.2%	1	0.1%
Single Family Sub-total	4,966.3	100.0%	1,418	100.0%

Land Use by Area

- Agricultural
- Single Family Residential
- Multiple Family
- Mobile Home Park
- Commercial/Office
- Industrial
- Public/Institutional
- Recreation/Conservation
- Transp./Utility/Comm.
- Extractive
- Vacant
- Water
- Railroad Right-of-Way
- Road Right-of-Way



For more information, maps, or questions about this data, please contact the Oakland County One Stop Shop at (248) 858-0720.