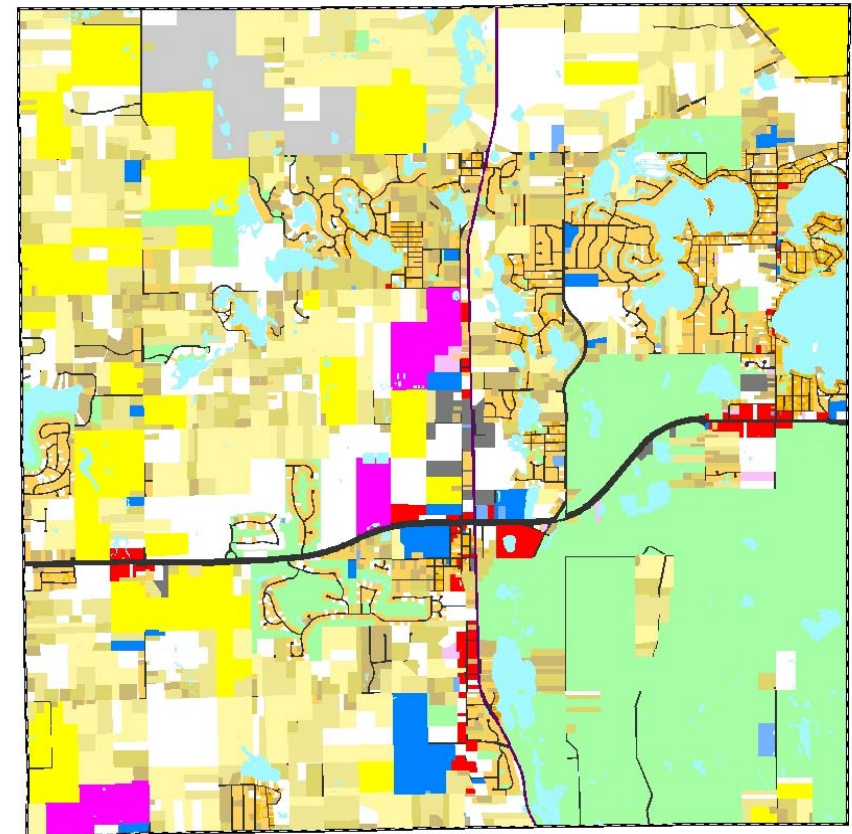
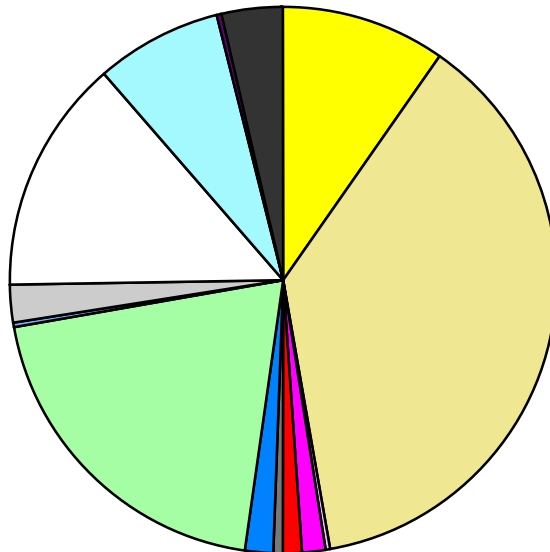


Land Use	Area (ac.)	Area (%)	Parcels	Parcels (%)
Agricultural	2,218.8	9.6%	51	0.7%
Single Family Residential	8,708.3	37.6%	5,934	81.8%
Multiple Family	45.2	0.2%	14	0.2%
Mobile Home Park	377.5	1.6%	6	0.1%
Commercial/Office	228.6	1.0%	127	1.8%
Industrial	144.2	0.6%	43	0.6%
Public/Institutional	380.7	1.6%	38	0.5%
Recreation/Conservation	4,632.0	20.0%	165	2.3%
Transp./Utility/Comm.	52.8	0.2%	19	0.3%
Extractive	518.0	2.2%	2	0.0%
Vacant	3,239.6	14.0%	857	11.8%
Water	1,679.2	7.3%		
Railroad Right-of-Way	72.6	0.3%		
Road Right-of-Way	854.7	3.7%		
Total	23,152.2	100.0%	7,256	100.0%

Single Family By Lot Size	Area (ac.)	Area (%)	Parcels	Parcels (%)
10 acres or greater	2,816.8	32.3%	213	3.6%
5 to 9.9 acres	1,709.7	19.6%	252	4.2%
2.5 to 4.9 acres	1,317.7	15.1%	373	6.3%
1 to 2.4 acres	940.7	10.8%	569	9.6%
14,000 to 43,559 sq. ft.	1,630.3	18.7%	3,150	53.1%
8,000 to 13,999 sq. ft.	221.5	2.5%	882	14.9%
Less than 8,000 sq. ft.	71.7	0.8%	495	8.3%
More than one unit per parcel				
Single Family Sub-total	8,708.3	100.0%	5,934	100.0%

Land Use by Area

- Agricultural
- Single Family Residential
- Multiple Family
- Mobile Home Park
- Commercial/Office
- Industrial
- Public/Institutional
- Recreation/Conservation
- Transp./Utility/Comm.
- Extractive
- Vacant
- Water
- Railroad Right-of-Way
- Road Right-of-Way



For more information, maps, or questions about this data, please contact the Oakland County One Stop Shop at (248) 858-0720.