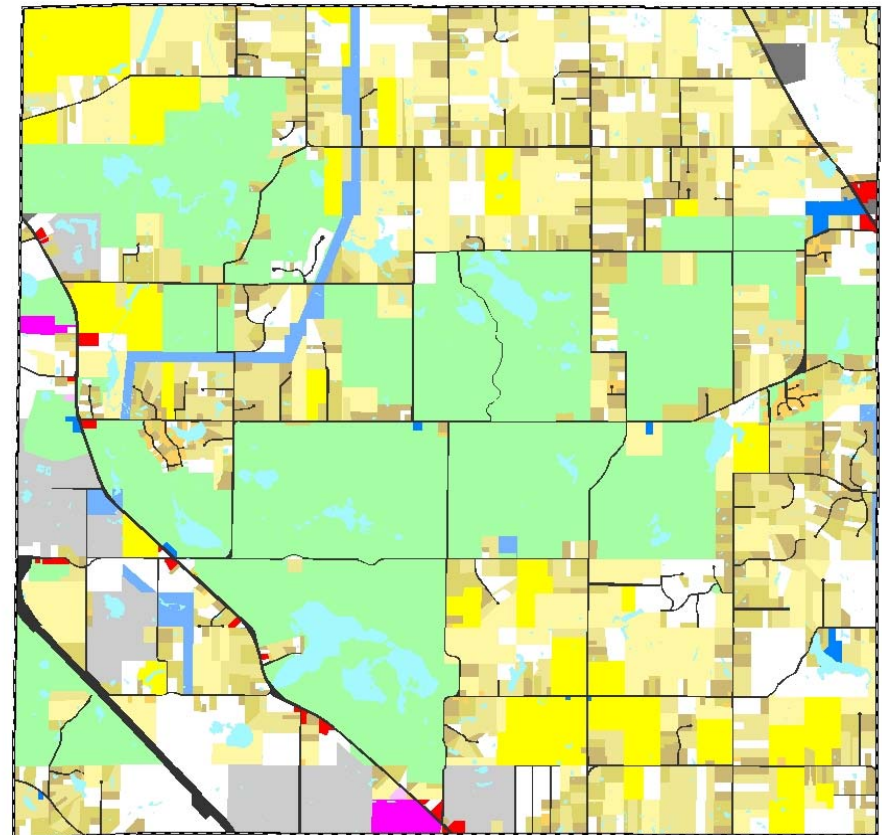
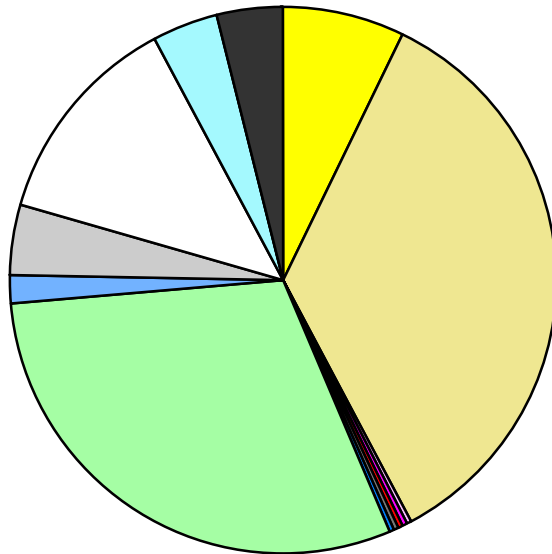


Land Use	Area (ac.)	Area (%)	Parcels	Parcels (%)
Agricultural	1,669.8	7.2%	42	1.9%
Single Family Residential	8,092.9	35.1%	1,636	72.2%
Multiple Family	7.4	0.0%	2	0.1%
Mobile Home Park	91.0	0.4%	3	0.1%
Commercial/Office	67.2	0.3%	29	1.3%
Industrial	48.4	0.2%	4	0.2%
Public/Institutional	62.0	0.3%	11	0.5%
Recreation/Conservation	6,960.6	30.2%	77	3.4%
Transp./Utility/Comm.	344.7	1.5%	17	0.8%
Extractive	953.7	4.1%	21	0.9%
Vacant	2,943.2	12.8%	423	18.7%
Water	905.4	3.9%		
Railroad Right-of-Way				
Road Right-of-Way	914.1	4.0%		
<b>Total</b>	<b>23,060.4</b>	<b>100.0%</b>	<b>2,265</b>	<b>100.0%</b>

Single Family By Lot Size	Area (ac.)	Area (%)	Parcels	Parcels (%)
10 acres or greater	2,946.0	36.4%	153	9.4%
5 to 9.9 acres	2,304.8	28.5%	282	17.2%
2.5 to 4.9 acres	1,531.9	18.9%	414	25.3%
1 to 2.4 acres	1,177.7	14.6%	608	37.2%
14,000 to 43,559 sq. ft.	131.4	1.6%	175	10.7%
8,000 to 13,999 sq. ft.	1.1	0.0%	4	0.2%
Less than 8,000 sq. ft.				
More than one unit per parcel				
<b>Single Family Sub-total</b>	<b>8,092.9</b>	<b>100.0%</b>	<b>1,636</b>	<b>100.0%</b>

### Land Use by Area

- Agricultural
- Single Family Residential
- Multiple Family
- Mobile Home Park
- Commercial/Office
- Industrial
- Public/Institutional
- Recreation/Conservation
- Transp./Utility/Comm.
- Extractive
- Vacant
- Water
- Railroad Right-of-Way
- Road Right-of-Way



For more information, maps, or questions about this data, please contact the Oakland County One Stop Shop at (248) 858-0720.