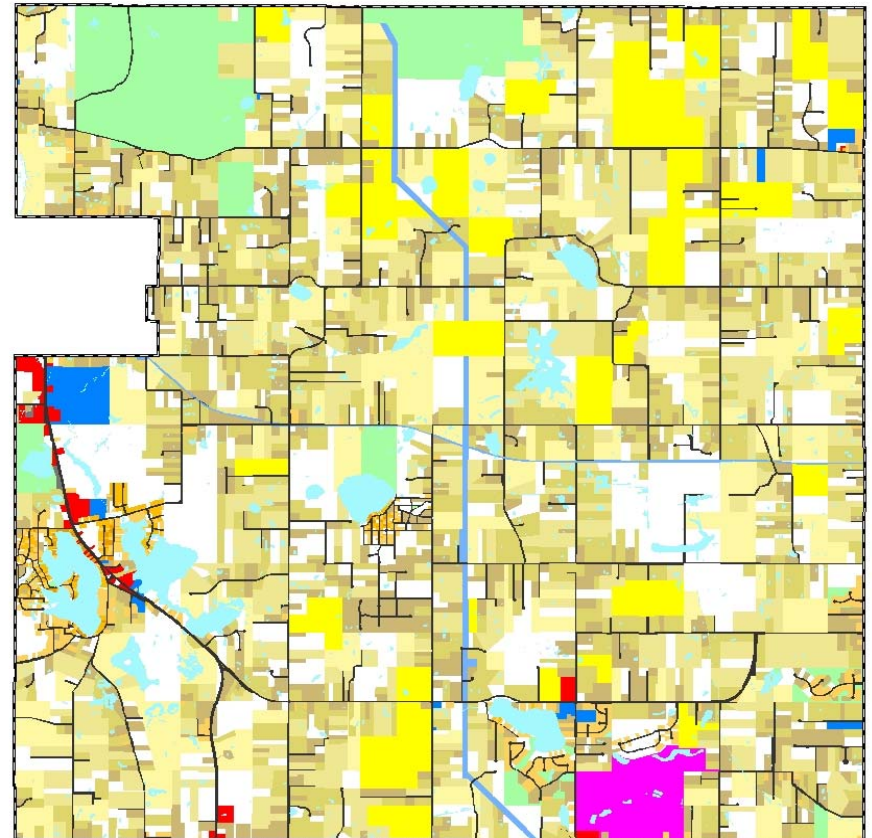
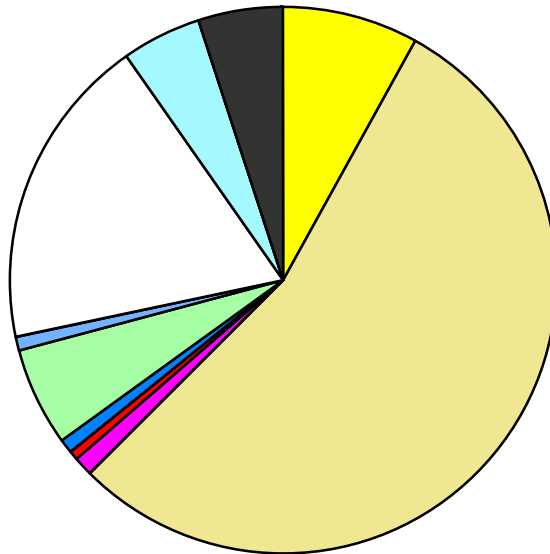


Land Use	Area (ac.)	Area (%)	Parcels	Parcels (%)
Agricultural	1,794.7	8.0%	54	1.1%
Single Family Residential	12,181.2	54.4%	3,805	74.8%
Multiple Family				
Mobile Home Park	272.0	1.2%	4	0.1%
Commercial/Office	107.4	0.5%	59	1.2%
Industrial	5.3	0.0%	6	0.1%
Public/Institutional	174.8	0.8%	18	0.4%
Recreation/Conservation	1,327.1	5.9%	182	3.6%
Transp./Utility/Comm.	194.4	0.9%	10	0.2%
Extractive				
Vacant	4,177.2	18.7%	947	18.6%
Water	1,039.4	4.6%		
Railroad Right-of-Way				
Road Right-of-Way	1,114.5	5.0%		
Total	22,388.0	100.0%	5,085	100.0%

Single Family By Lot Size	Area (ac.)	Area (%)	Parcels	Parcels (%)
10 acres or greater	2,689.0	22.1%	156	4.1%
5 to 9.9 acres	3,372.9	27.7%	435	11.4%
2.5 to 4.9 acres	3,232.6	26.5%	899	23.6%
1 to 2.4 acres	2,408.2	19.8%	1,184	31.1%
14,000 to 43,559 sq. ft.	377.7	3.1%	648	17.0%
8,000 to 13,999 sq. ft.	80.9	0.7%	338	8.9%
Less than 8,000 sq. ft.	19.8	0.2%	145	3.8%
More than one unit per parcel				
Single Family Sub-total	12,181.2	100.0%	3,805	100.0%

Land Use by Area

- Agricultural
- Single Family Residential
- Multiple Family
- Mobile Home Park
- Commercial/Office
- Industrial
- Public/Institutional
- Recreation/Conservation
- Transp./Utility/Comm.
- Extractive
- Vacant
- Water
- Railroad Right-of-Way
- Road Right-of-Way



For more information, maps, or questions about this data, please contact the Oakland County One Stop Shop at (248) 858-0720.