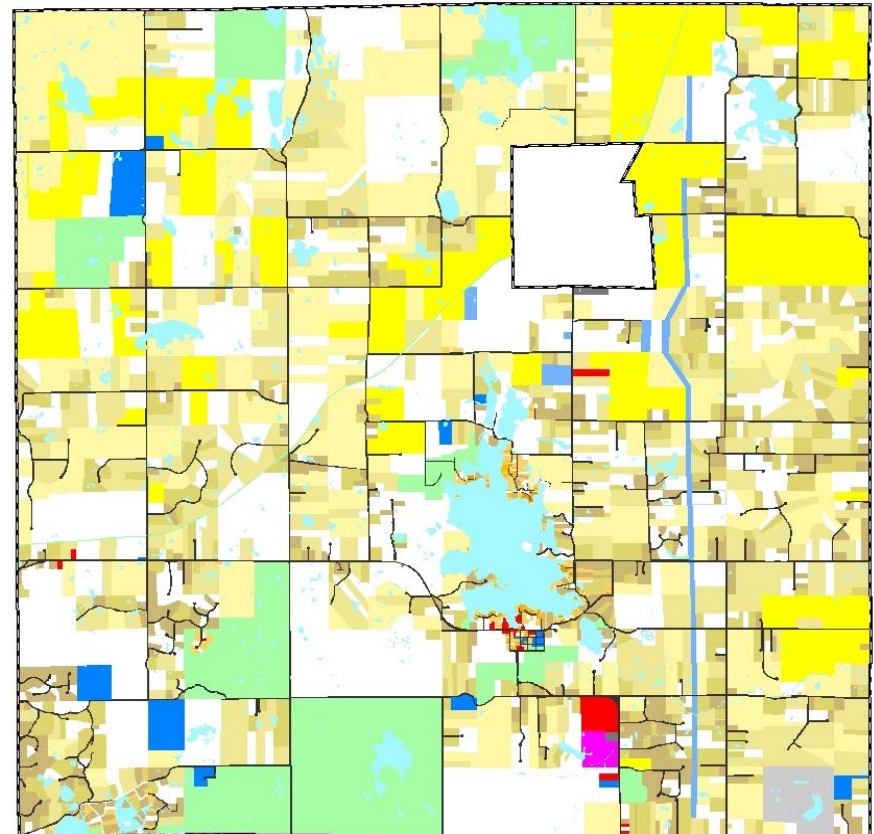
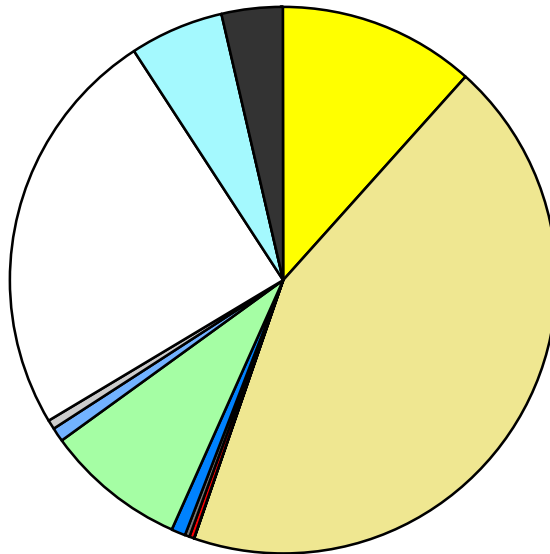


Land Use	Area (ac.)	Area (%)	Parcels	Parcels (%)
Agricultural	2,627.8	11.5%	61	2.2%
Single Family Residential	9,949.1	43.7%	1,917	69.6%
Multiple Family				
Mobile Home Park	36.7	0.2%	1	0.0%
Commercial/Office	67.3	0.3%	16	0.6%
Industrial	13.6	0.1%	2	0.1%
Public/Institutional	236.1	1.0%	19	0.7%
Recreation/Conservation	1,873.0	8.2%	57	2.1%
Transp./Utility/Comm.	172.6	0.8%	9	0.3%
Extractive	134.6	0.6%	3	0.1%
Vacant	5,579.3	24.5%	668	24.3%
Water	1,279.8	5.6%		
Railroad Right-of-Way				
Road Right-of-Way	821.2	3.6%		
<b>Total</b>	<b>22,791.0</b>	<b>100.0%</b>	<b>2,753</b>	<b>100.0%</b>

Single Family By Lot Size	Area (ac.)	Area (%)	Parcels	Parcels (%)
10 acres or greater	4,300.9	43.2%	234	12.2%
5 to 9.9 acres	2,879.3	28.9%	352	18.4%
2.5 to 4.9 acres	1,581.3	15.9%	440	23.0%
1 to 2.4 acres	1,050.0	10.6%	545	28.4%
14,000 to 43,559 sq. ft.	108.5	1.1%	186	9.7%
8,000 to 13,999 sq. ft.	17.6	0.2%	70	3.7%
Less than 8,000 sq. ft.	11.5	0.1%	90	4.7%
More than one unit per parcel				
<b>Single Family Sub-total</b>	<b>9,949.1</b>	<b>100.0%</b>	<b>1,917</b>	<b>100.0%</b>

### Land Use by Area

- Agricultural
- Single Family Residential
- Multiple Family
- Mobile Home Park
- Commercial/Office
- Industrial
- Public/Institutional
- Recreation/Conservation
- Transp./Utility/Comm.
- Extractive
- Vacant
- Water
- Railroad Right-of-Way
- Road Right-of-Way



For more information, maps, or questions about this data, please contact the Oakland County One Stop Shop at (248) 858-0720.