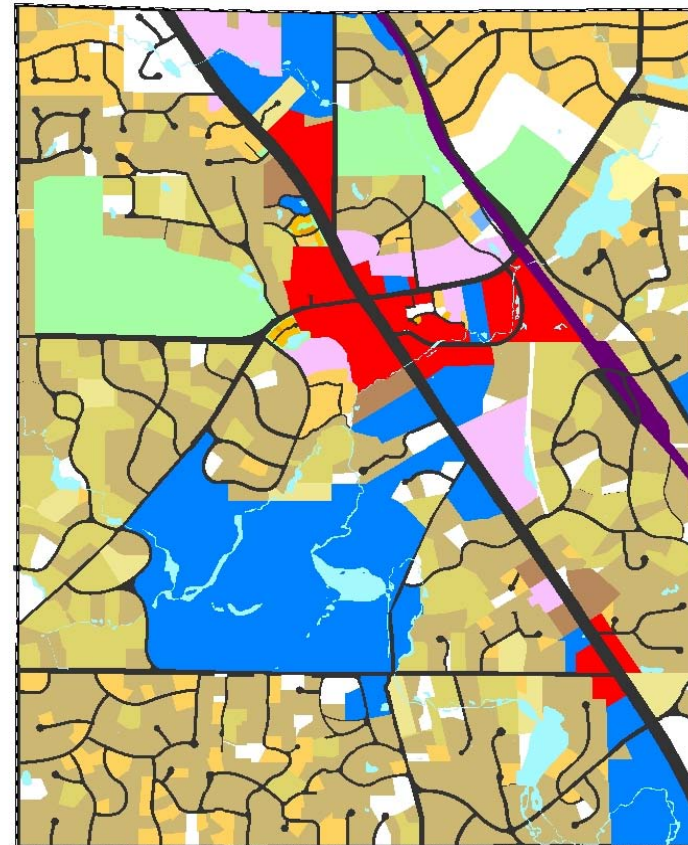
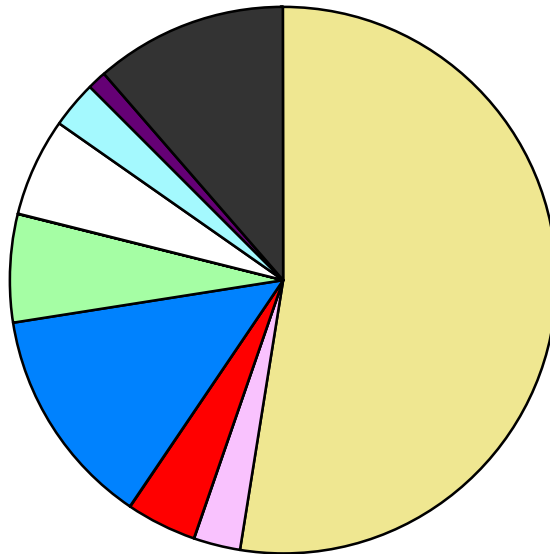


Land Use	Area (ac.)	Area (%)	Parcels	Parcels (%)
Agricultural				
Single Family Residential	1,689.9	52.4%	1,144	83.0%
Multiple Family	95.6	3.0%	19	1.4%
Mobile Home Park				
Commercial/Office	126.2	3.9%	44	3.2%
Industrial				
Public/Institutional	420.7	13.1%	37	2.7%
Recreation/Conservation	210.8	6.5%	15	1.1%
Transp./Utility/Comm.	1.5	0.0%	1	0.1%
Extractive				
Vacant	187.0	5.8%	118	8.6%
Water	88.2	2.7%		
Railroad Right-of-Way	35.8	1.1%		
Road Right-of-Way	367.6	11.4%		
Total	3,223.2	100.0%	1,378	100.0%

Single Family By Lot Size	Area (ac.)	Area (%)	Parcels	Parcels (%)
10 acres or greater	10.1	0.6%	1	0.1%
5 to 9.9 acres	68.6	4.1%	11	1.0%
2.5 to 4.9 acres	329.1	19.5%	103	9.0%
1 to 2.4 acres	980.3	58.0%	671	58.7%
14,000 to 43,559 sq. ft.	266.9	15.8%	330	28.8%
8,000 to 13,999 sq. ft.	4.4	0.3%	19	1.7%
Less than 8,000 sq. ft.	0.7	0.0%	4	0.3%
More than one unit per parcel	29.8	1.8%	5	0.4%
Single Family Sub-total	1,689.9	100.0%	1,144	100.0%

Land Use by Area

- Agricultural
- Single Family Residential
- Multiple Family
- Mobile Home Park
- Commercial/Office
- Industrial
- Public/Institutional
- Recreation/Conservation
- Transp./Utility/Comm.
- Extractive
- Vacant
- Water
- Railroad Right-of-Way
- Road Right-of-Way



For more information, maps, or questions about this data, please contact the Oakland County One Stop Shop at (248) 858-0720.