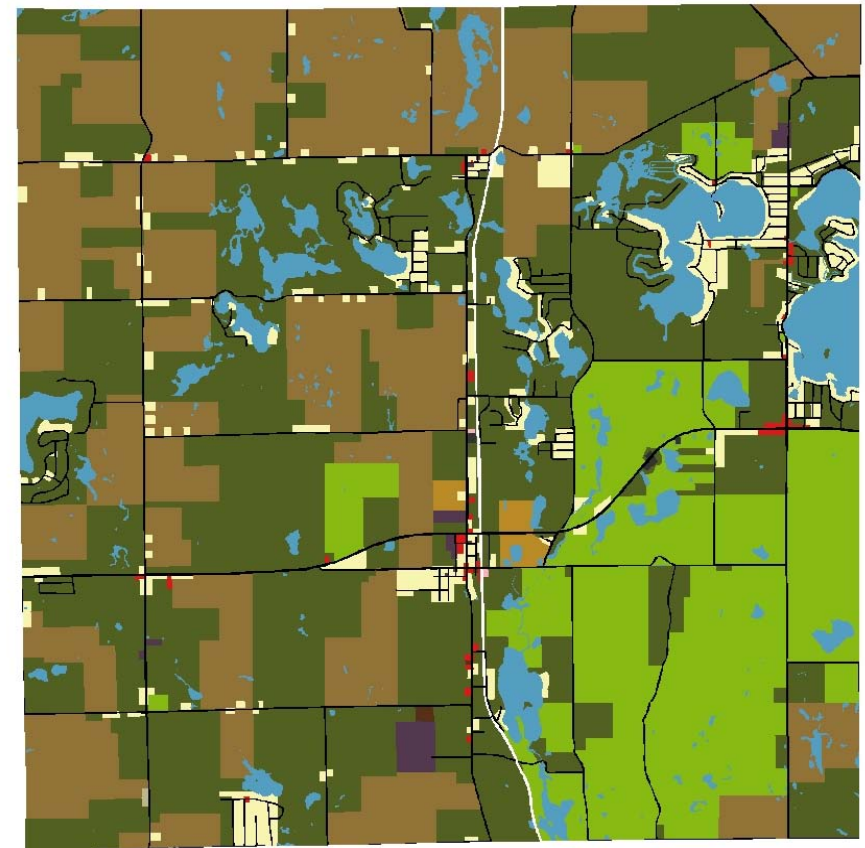
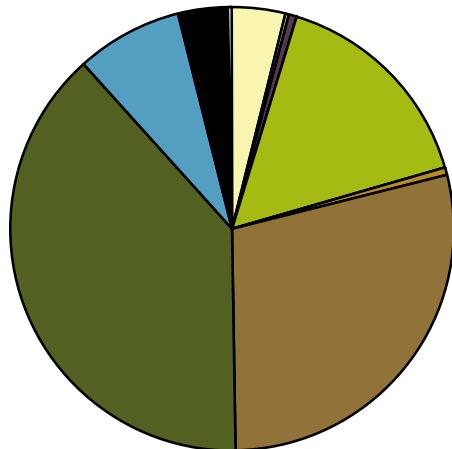


| Land Use   | Area (ac.)      | Area (%)      |
|--|-----------------|---------------|
| Residential - Single and Multiple Family Dwellings | 931.6           | 4.0%          |
| Residential - Hotels, Motels, and Trailer Parks    | 3.9             | 0.0%          |
| Commercial   | 44.1            | 0.2%          |
| Public and Quasi-Public                            | 104.8           | 0.5%          |
| Manufacturing                                      | 8.1             | 0.0%          |
| Industrial Non-Manufacturing                       | 10.1            | 0.0%          |
| Recreation and Conservation                        | 3,669.3         | 15.8%         |
| Transportation, Communications, and Utilities      | 2.5             | 0.0%          |
| Extractive   |                 |               |
| Agriculture - Specialized Services                 | 101.6           | 0.4%          |
| Agriculture - General Farming                      | 6,625.6         | 28.6%         |
| Undeveloped Open Space                             | 8,953.2         | 38.7%         |
| Lakes and Ponds                                    | 1,771.3         | 7.7%          |
| Road ROW   | 854.8           | 3.7%          |
| Railroad ROW                                       | 71.2            | 0.3%          |
| <b>Total</b>                                       | <b>23,152.0</b> | <b>100.0%</b> |



Land Use by Area



For more information, maps, or questions about this data, please contact the Oakland County One Stop Shop at (248) 858-0720.