

# Planning for Green River Corridors



Environmental  
Stewardship  
Program



Prepared by:  
Oakland County Planning  
& Economic Development  
Services

L. Brooks Patterson,  
County Executive

John P. McCulloch,  
Drain Commissioner

May 2007



A Resource Guide for Maximizing Community Assets Related to Rivers

These guidelines were prepared by Oakland County Planning & Economic Development Services as a part of the Rouge Green Corridor Identity Demonstration Project. Funding was provided by the Rouge River National Wet Weather Demonstration Project (U.S. EPA grant #XP995753-01-09) and was awarded to Oakland County Planning & Economic Development under L. Brooks Patterson, County Executive.

Project partners included Southeast Oakland County Water Authority (SOCWA), Friends of the Rouge, Oakland Land Conservancy, City of Southfield, Village of Beverly Hills, City of Birmingham, and the Oakland County Drain Commissioner's Office. Project consultants included Carlisle/Wortman Associates, In Site Design, and Margot Campos Design.

# Table of Contents

Page	Chapter	Title
1	Chapter 1	Riparian Corridors: An Opportunity to Connect to Nature
7	Chapter 2	Riparian Corridors in the Landscape of Southeast Michigan
19	Chapter 3	Land and Identity: A Planning Process for Riparian Corridors
41	Chapter 4	Conservation and Restoration of Riparian Corridors
55	Chapter 5	Cultural Resources: Building Awareness and Connecting with the River
69	Chapter 6	The Role of Community Planning in Riparian Corridor Protection
91	Chapter 7	Funding Riparian Initiatives
101	Chapter 8	Case Study: Riparian Planning and Implementation in the Rouge Green Corridor
115	Chapter 9	Summary & Additional Resources

# Overview

## Why This Manual?

The information and tools provided in this manual are designed to assist communities blessed with river corridors to take a fresh look at their riparian resources. By using these techniques and approaches, communities can begin to leverage the opportunities a river or stream flowing through the landscape provides their residents.

The information is targeted to community officials, planners, engineers, environmental groups, and citizens. Additionally, those who own land along the river, as well as river enthusiasts such as anglers, paddlers, and nature-lovers can benefit from this information.

### Riparian (Ri\*pa”ri\*an)

Adjective

1. Of or relating to or located on the banks of a river or stream; “riparian land”.

This manual includes the following chapters:

- 1. Riparian Corridors: An Opportunity to Connect to Nature** An introduction to the opportunities presented by riparian corridors.
- 2. Riparian Corridors in the Landscape of Southeast Michigan** Information about the geography, ecology, and history of riparian corridors.

- 3. Land and Identity: A Planning Process for Riparian Corridors** Options for planning for riparian corridor enhancement and protection.

- 4. Conservation and Restoration of Riparian Corridors** References to best practices for the preservation and ecological management of riparian resources

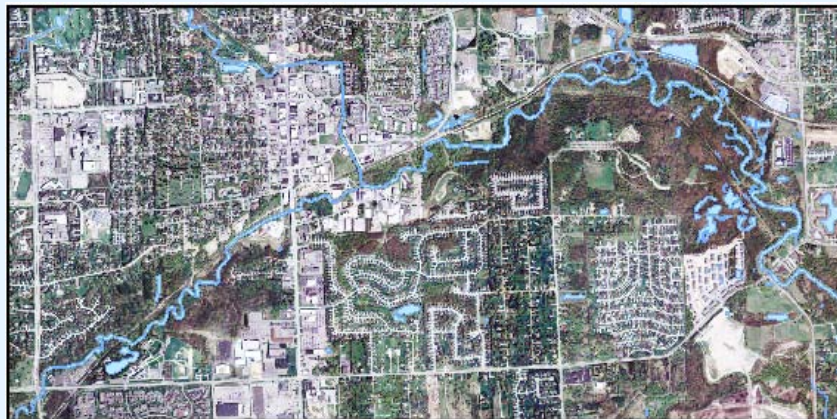
- 5. Cultural Resources: Building Awareness and Connecting with the River** Options for bringing people and the river together.

- 6. The Role of Community Planning in Riparian Corridor Protection** Information about the role of local community planning and regulatory measures that can help protect riparian resources.

- 7. Funding Riparian Initiatives** Information about funding opportunities for work in riparian areas.

- 8. Case Study: Riparian Planning and Management in the Rouge Green Corridor** Discussion and lessons learned from a riparian corridor project in southeast Oakland County.

- 9. Summary & Additional Resources** The importance of developing and building river identity and communications tools are discussed. A case study of riparian corridor planning and management in the Rouge Green Corridor in Southeast Oakland County is presented. Finally, a summary and additional resources are given.



The Clinton River flows through urban, suburban, and natural landscapes in the cities of Rochester and Rochester Hills, providing community amenities that can be leveraged through planning and promoting the river as a resource.