

EMPLOYMENT & WAGES

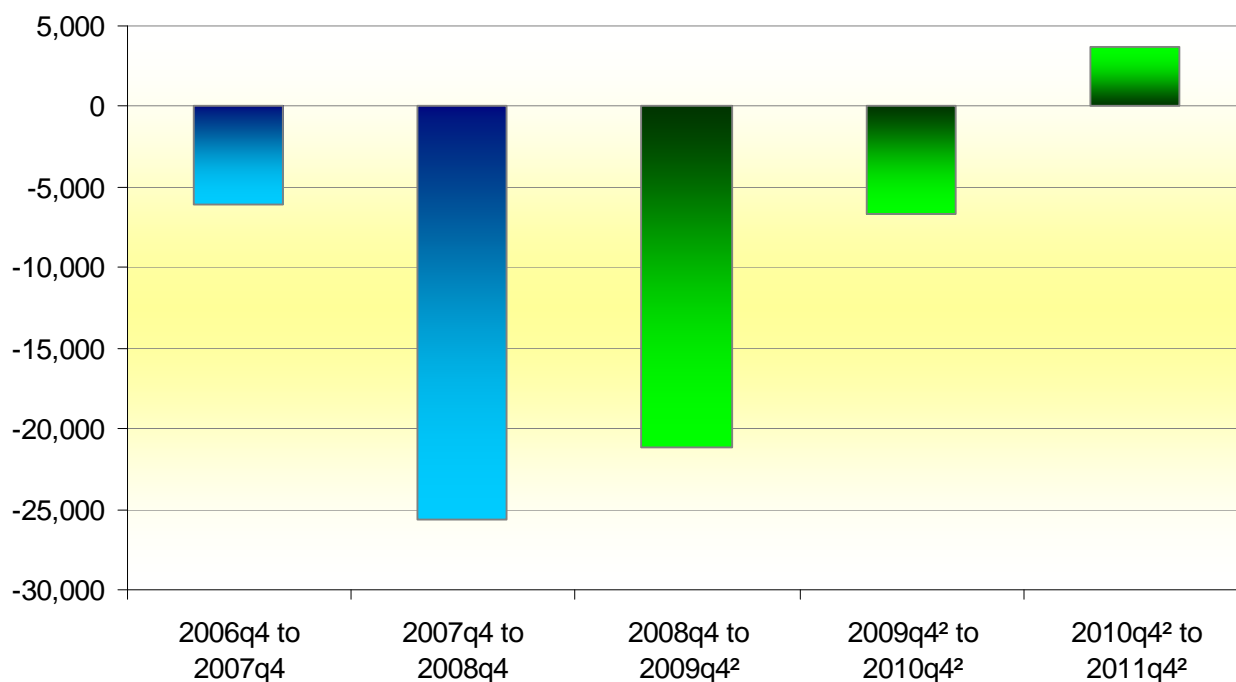
Employment Forecast

- ◆ The goods-producing sector will experience the brunt of the losses through 2011 with a projected decline of 12,419 jobs or 14% of the current positions in those fields.
- ◆ Even during times of significant job losses, Oakland County is projected to add new jobs in a variety of fields as shown below.

Projected Employment in Selected Growth Sectors

Industry	2008	2009	2010	2011	Growth	Average Salary ¹
Medical Equipment Wholesalers	1,160	1,256	1,359	1,470	26.7%	\$84,961
Turbine and Power Transmission Equip. Mfg	456	477	502	527	15.6%	\$43,793
Hospital Services	33,466	35,603	36,949	38,509	15.1%	\$51,486
Scientific R&D Services	1,376	1,237	1,382	1,539	11.8%	\$96,686
Health Care and Social Assistance	92,273	94,858	96,677	99,061	7.4%	\$44,992
Medical Equipment Manufacturing	849	883	906	932	9.8%	\$43,764
Business and Administrative Support Services	5,731	5,831	5,981	6,276	9.5%	\$41,935
Aerospace Parts Manufacturing	902	930	942	954	5.8%	\$77,375
Education Services	10,197	10,208	10,171	10,275	0.8%	\$32,026

Oakland County Job Growth, 2007 to 2011



¹ Based on 2007 figures

² Projected

Source: University of Michigan Institute for Research on Labor, Employment, and the Economy
 Updated: September 2009