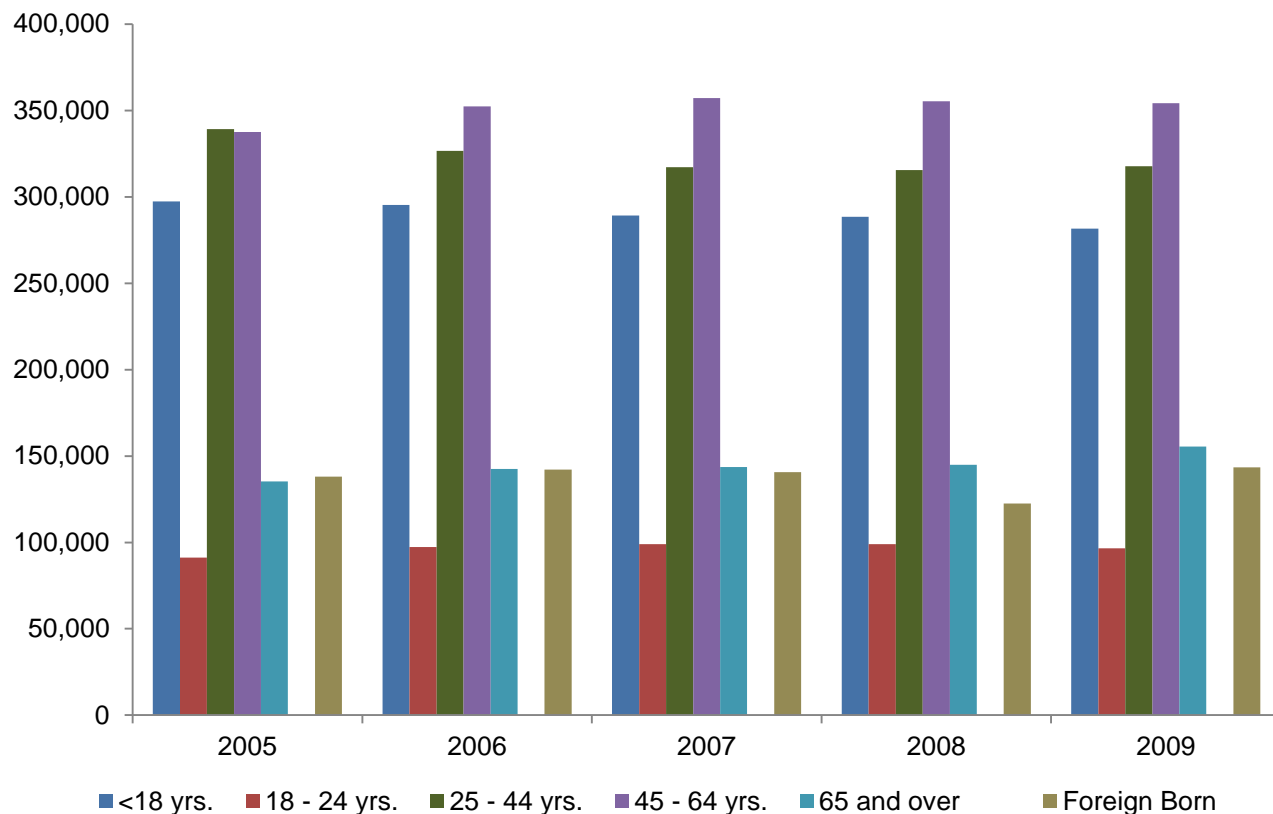


POPULATION GROWTH

Age Distribution



- With a population of 1,202,362, Oakland County ranks 32nd among all U.S. counties in total population
- Oakland County's population grew by more than 8,200 residents between 2000 and 2010
- In 2009, children under the age of 18 made up 23% of the County's total population
- Between 2005 and 2009, the county's college-age population (18 – 24) grew by 6%, representing the second fastest growing segment in the County, behind only those age 65 and over
- As of 2009, the largest age cohort in the county was 45 – 64 years old representing 29% of the total population; 25 – 44 year olds make up the second largest cohort at 26%
- In 2009 the County's median age was 39.9 years, a slight decrease from the median of 40.3 in 2008
- ◆ Foreign born residents represented 12% of the total population in 2009, while residents born in states other than Michigan represent slightly less than 17% of the County's total population