

# West Bloomfield Township

A Community you can LIVE in!

Rebuilt from the days of lake cottages, West Bloomfield's rolling hills provide the setting for the beautiful and lavish homes there today. Development pressures and vanishing farmland have helped residents create a sensitivity to environmental quality and preservation of natural resources, which contributes to the overall quality and character of the Township. Their 426-acre park system offer residents more than 250 programs and outdoor recreational activities throughout the year. The Jewish Community Center is a recreational, educational and cultural establishment all under one roof. West Bloomfield has no designated downtown. Major shopping is found on Orchard Lake Road between Pontiac Trail and 14 Mile Road where there are many restaurants (some with ethnic cuisine), small malls, boutique shops and business offices. All this helped earn West Bloomfield a rank of 14th in Money Magazine's Top 100 Best Places to Live for 2006.

## Local Government

### Supervisor

Michele Economou (248) 451-480

### Planning Director

Sara Roediger (248) 451-4876

### Clerk

Cathy Shaughnessy (248) 634-4152

[www.twp.west-bloomfield.mi.us](http://www.twp.west-bloomfield.mi.us)

## Public School Enrollment

Does not include public school academies

School District	Year	Enrollment
Birmingham	2010 - 2011	8,057
Bloomfield Hills	2010 - 2011	5,654
Farmington	2010 - 2011	11,437
Pontiac	2010 - 2011	5,644
Walled Lake	2010 - 2011	15,291
Waterford	2010 - 2011	11,430

Enrollment numbers represent district wide enrollment

## 2011 Tax Rates

School District	Homestead	Non Homestead
Birmingham	41.2482	49.2242
Bloomfield Hills	39.3174	48.6662
Farmington	40.5576	48.4042
Pontiac	30.4742	48.4742
Walled Lake	35.1054	50.7242
Waterford	34.0742	52.0742
West Bloomfield	40.9407	54.2339

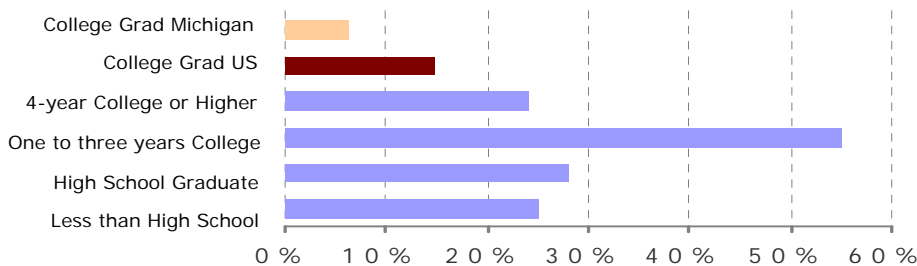
## Private Schools

Bloomfield Maples Montessori, Brookfield Academy, Jewish Academy of Metro Detroit, Learning Circle Academy, Sarah and Irving Pitt Child Development, Temple Israel Early Childhood Center

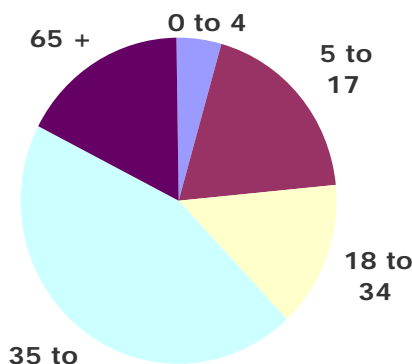
## Colleges and Universities

Michigan State University

## Educational Attainment of People Over 25 Years of Age

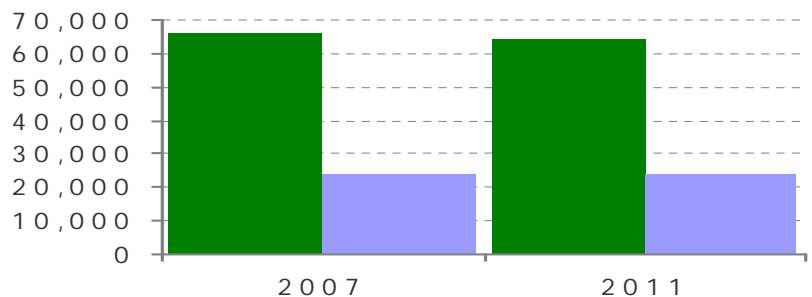


## Population by Age



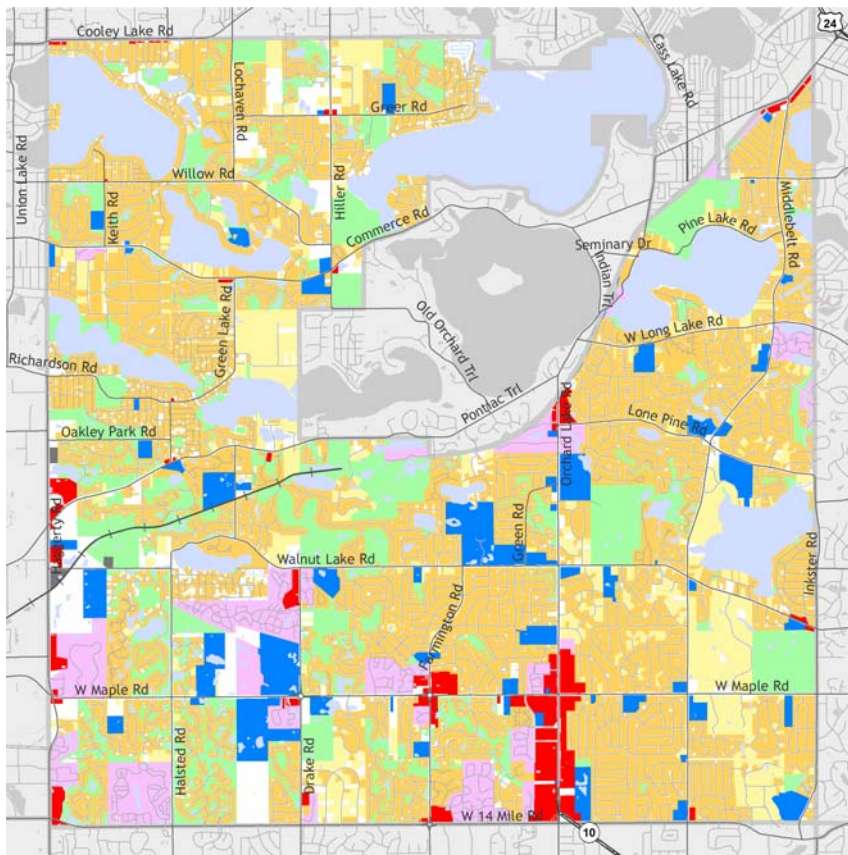
Source: U.S. Census Bureau

## Population and Household Growth



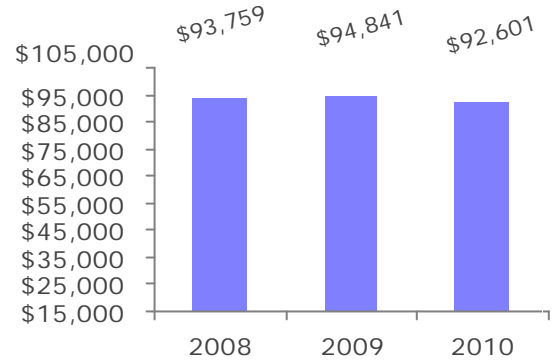
Source: SEMCOG

## West Bloomfield Township



The information provided has been compiled from recorded deeds, plats, tax maps, surveys, and other public records. It is not a legally recorded map or survey and is not intended to be used as one. For more detailed land use information, go to <http://www.oakgov.com/luz>

## Median Household Income



Source: Claritas

## Housing Sales

<b>2011 # of Sales</b>	968
<b>2011 Median Sale</b>	\$155,000
<b>2011 Avg DOM</b>	103
<b>2010 # of Sales</b>	949
<b>2010 Median Sale</b>	\$160,000
<b>2010 Avg DOM</b>	119
<b>2009 # of Sales</b>	3,354
<b>2009 Median Sale</b>	\$165,000
<b>2009 Avg DOM</b>	128

Source: RealComp II Ltd.

## Top Employers

Rank	Company Name	Industry
1	Walled Lake School District	Primary and secondary education
2	Bloomfield Hills School District	Primary and secondary education
3	West Bloomfield School District	Primary and secondary education
4	ewish Community Center of Metro Detro	Religious organizations
5	Township of West Bloomfield	Government services
6	Temple Israel	Religious organizations
7	vin & Betty Danto Family Health Care Ce	Nursing care facilities
8	Beaumont Nursing Center	Nursing care facilities
9	Knollwood Country Club	Golf courses and country clubs
10	Whole Foods Market	Grocery stores and supermarkets
11	Shenandoah Country Club	Golf courses and country clubs



Market Research Services Oakland County Economic Development and Community Affairs  
2100 Pontiac Lake Road, 41W, Waterford Michigan 48328 -- [www.oakgov.com](http://www.oakgov.com)