

# Waterford Township

## Discover Waterford

The Township of Waterford is a commercially-mixed, residential community located in the center of the county. Thirty miles northwest of Detroit and a 45-minute drive to either Flint or Detroit, M-59 traverses the center linking the township to the cities of Pontiac, Brighton and Howell. The Oakland International Airport is base to over 850 small to mid-sized aircraft and supports over 300,000 takeoff and landings each year. Commercial development continues to expand along the major thoroughfares of M-59, Dixie Highway and Telegraph Road. Waterford Township is a Charter Township regulated by the Charter Township Act adopted by the State Legislature in 1947. The seven-member Board of Trustees consists of the Supervisor, Clerk, Treasurer, and four elected trustees. Home to 34 of Oakland County's public and private lakes and approximately 50 miles of bike paths, Waterford Township offers a plethora of outdoor activity.

## Local Government

### Supervisor

Carl W. Solden (248) 674-620

### Community Planning & Development

Robert Vallina (248) 674-6255

### Clerk

Kari Vlaeminck (248) 674-6266

[twp.waterford.mi.us/](http://twp.waterford.mi.us/)

## Public School Enrollment

Does not include public school academies

School District	Year	Enrollment
Clarkston	2010 - 2011	8,093
Pontiac	2010 - 2011	5,644
Waterford	2010 - 2011	11,430

## 2011 Tax Rates

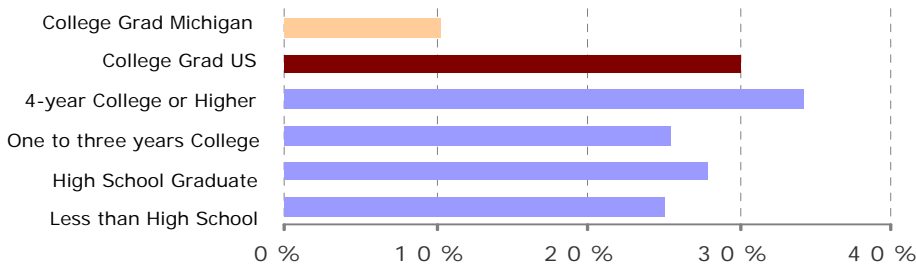
School District	Homestead	Non Homestead
Clarkston	33.5891	51.5891
Pontiac	28.8391	46.8391
Waterford	32.4391	50.4391

## Private Schools

Brookfield Academy, Lakecrest Baptist School, My School, Our Lady of the Lakes Schools, St. Benedict, St. Stephen Lutheran, Waterford Adventist, Waterford Christian Academy, Waterford General Baptist Academy, Marist Academy, Airport Road Day Care Center

Enrollment numbers represent district wide enrollment

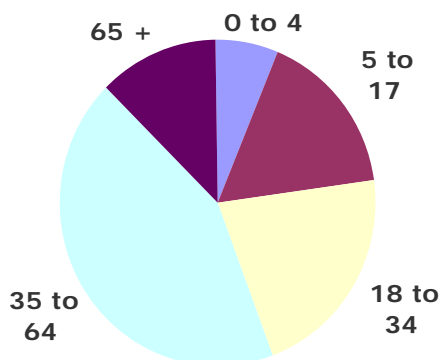
## Educational Attainment of People Over 25 Years of Age



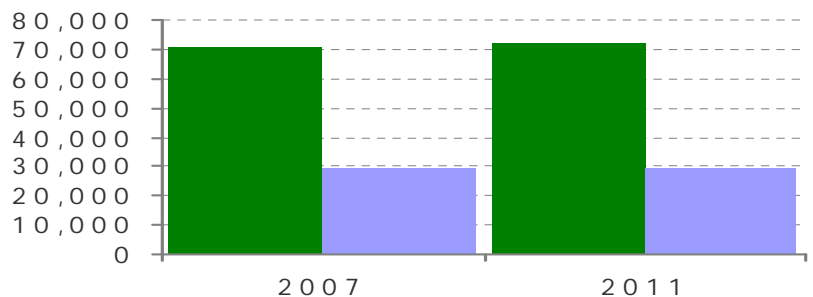
## Colleges and Universities

Oakland Community College (Highland Lakes)

## Population by Age



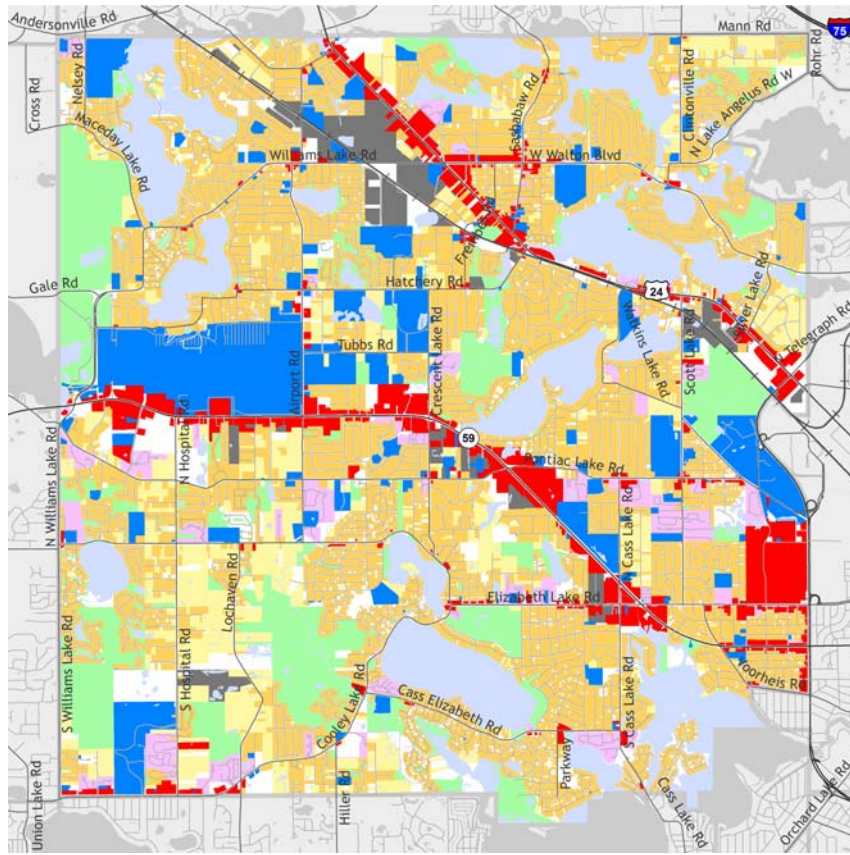
## Population and Household Growth



Source: U.S. Census Bureau

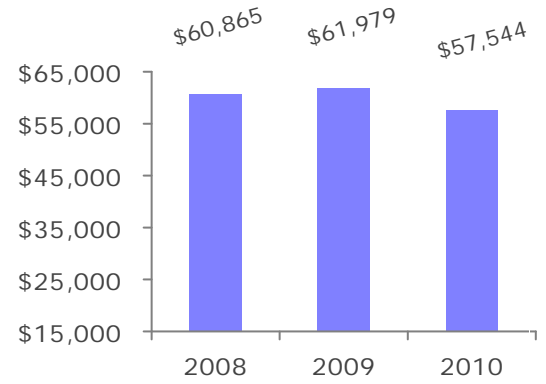
Source: SEMCOG

## Waterford Township



The information provided has been compiled from recorded deeds, plats, tax maps, surveys, and other public records. It is not a legally recorded map or survey and is not intended to be used as one. For more detailed land use information, go to <http://www.oakgov.com/luz>

## Median Household Income



Source: Claritas

## Housing Sales

<b>2011 # of Sales</b>	1,168
<b>2011 Median Sale</b>	\$68,000
<b>2011 Avg DOM</b>	104
<b>2010 # of Sales</b>	1,128
<b>2010 Median Sale</b>	\$68,000
<b>2010 Avg DOM</b>	91
<b>2009 # of Sales</b>	2,958
<b>2009 Median Sale</b>	\$65,000
<b>2009 Avg DOM</b>	102

Source: RealComp II Ltd.

## Top Employers

Rank	Company Name	Industry
1	Waterford School District	Primary and secondary education
2	Oakland County	Government services
3	Oakland County Road Commission	County road agency
4	Township of Waterford	Government services
5	Oakland Schools	Primary and secondary education
6	Meijer, Inc.	Discount department stores
7	Pentastar Aviation	Air transportation
8	Canterbury Health Care, Inc.	Nursing care facilities
9	K-mart	Discount department stores
10	Oakland Community College	Junior colleges
11	Sam's Club	Discount retail store and warehouse club
12	Gulf & Caribbean Cargo, Inc.	Freight air transportation
13	Suburban Ford of Waterford	Automobile dealers

