

# Troy

A community you can LIVE in!

In the heart of Oakland County, only 20 minutes from Detroit with access to I-75, I-696, and M-59, this community offers residents and businesses a tremendous competitive advantage, including attractive neighborhoods, excellent schools and employment opportunities. The City of Troy is home to major corporations with a mix of high-rise and low-rise Class A office space, and light industrial and research parks. Sleek, modern office buildings have grown up along Big Beaver Road between Coolidge and Livernois and along Crooks road making this one of Metro Detroit's premier business districts. The finest upscale shopping exists at the Somerset Collection on both sides of Big Beaver Road connected by a fabulous skywalk. Troy continues investing in the public infrastructure, like expanding major roadway capacities and sanitary and storm water systems to keep pace with development needs. Troy is expanding on its parklands and open space already totaling over 790 acres.

## Local Government

### Mayor

Louise E. Schiling (248) 524-3500

### Manager

John Szerlag (248) 524-3330

### Clerk

Tonni L. Bartholomew (248) 524-3316

[www.troymi.gov](http://www.troymi.gov)

## Private Schools

Bethany Christian, Brookfield Academy, Children's Place Montessori, Christian Leadership Academy, Discovery Corner Learning Center, Oakland Children's Academy, Renaissance Montessori Ctr, Troy Adventist Academy, Schoolhouse Montessori Academy, Meadowbrook Nursery

## Public School Enrollment

Does not include public school academies

School District	Year	Enrollment
Avondale	2008 - 2009	3,827
Birmingham	2008 - 2009	8,095
Bloomfield Hills	2008 - 2009	5,643
Lamphere	2008 - 2009	2,678
Royal Oak	2008 - 2009	5,415
Troy	2008 - 2009	12,221
Warren	2008 - 2009	15,609

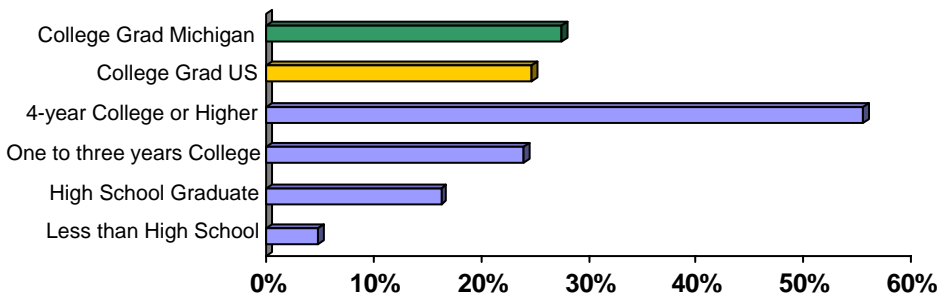
## 2009 Tax Rates

School District	Homestead	Non Homestead
Avondale	\$34.32	\$51.17
Birmingham	\$36.94	\$46.47
Bloomfield Hills	\$34.69	\$45.72
Lamphere	\$43.17	\$46.67
Royal Oak	\$32.92	\$48.28
Troy	\$34.34	\$47.67
Warren	\$34.07	\$46.29

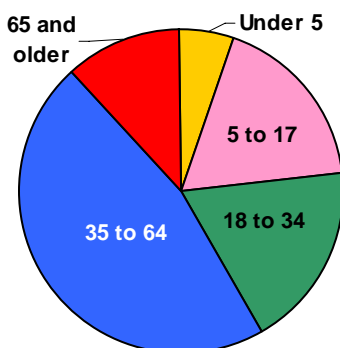
## Colleges and Universities

Central Michigan University (extension), International Academy of Design and Technology (IADT), Michigan State University (Mgmt Center), Northwood University, Walsh College, University of Phoenix, Cornerstone University

## Educational Attainment of People Over 25 Years of Age

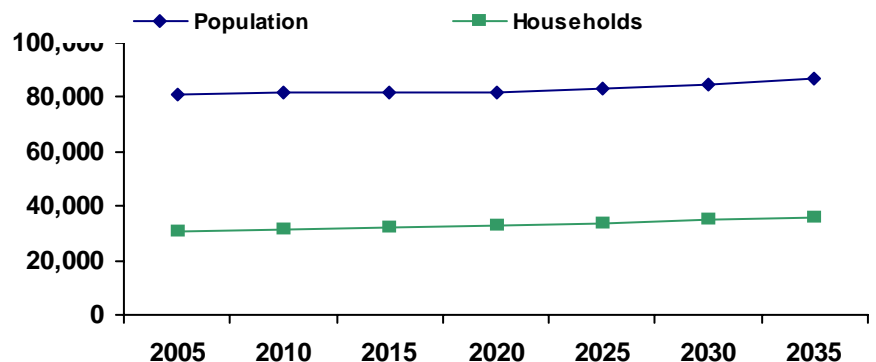


## Population by Age



Source: U.S. Census Bureau

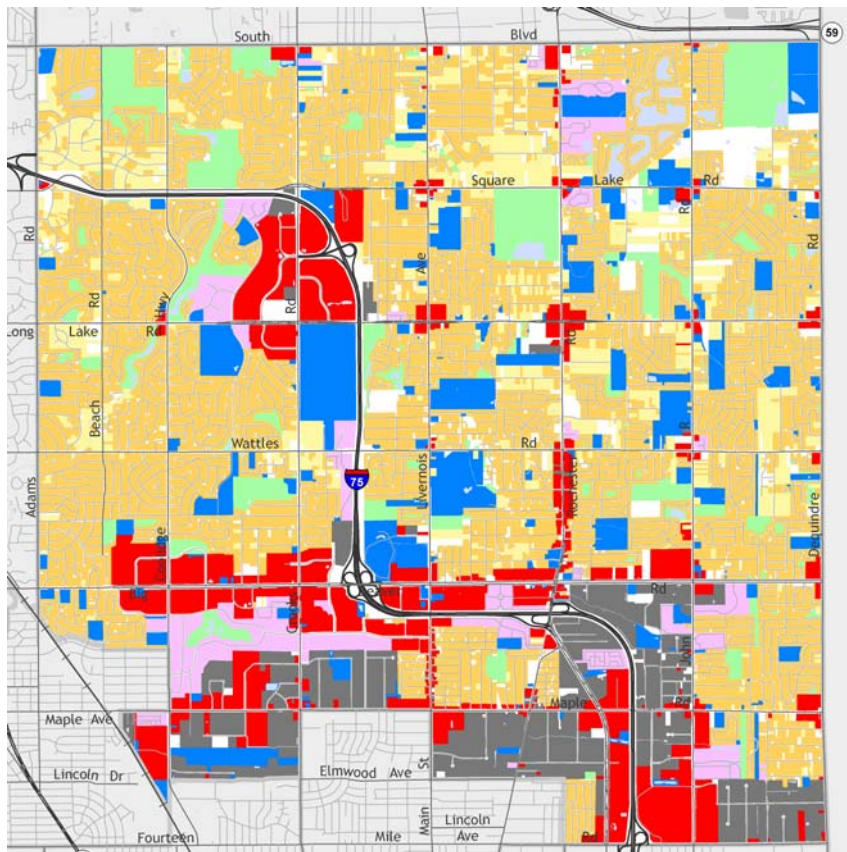
## Population and Household Growth



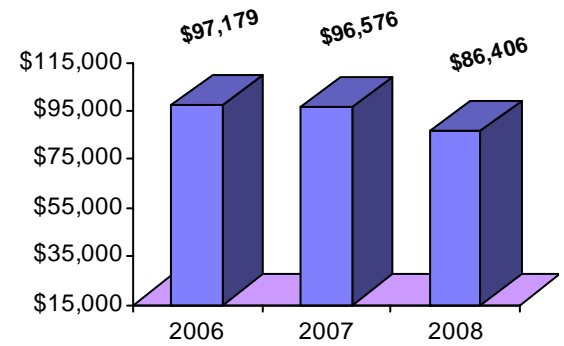
Source: SEMCOG

## Troy

## Median Household Income



The information provided has been compiled from recorded deeds, plats, tax maps, surveys, and other public records. It is not a legally recorded map or survey and is not intended to be used as one. For more detailed land use information, go to <http://www.oakgov.com/luz>



Source: Claritas

## Housing Sales

2010 # of Sales	239
2010 Median Sales \$	\$160,000
2010 Avg DOM	102
2009 # of Sales	2,352
2009 Median Sale \$	\$169,400
2009 Avg DOM	115
2008 # of Sales	635
2008 Median Sale \$	\$204,000
2008 Avg DOM	125

Realcomp (2010 through April only)

## Top Employers

Rank	Company Name	Industry
1	Troy School District	Primary education
2	Flagstar Bank Fsb	Federal savings institutions
3	William Beaumont Hospital	General medical and surgical hospitals
4	Kelly Services, Inc.	Temporary staffing agency
5	Delphi Automotive Systems	Motor vehicle parts and accessories
6	BBDO Detroit Inc.	Marketing communications
7	City of Troy	Government services
8	ArvinMeritor Inc.	Auto parts and supplies wholesaler
9	Behr America, Inc.	Motor vehicle parts and accessories
10	Sterling Cleaning Services	Building maintenance services

## Manufactured Housing

Year	# of Parks	# of Units
2005	1	282
2007	1	282
2003	1	282

Source: SEMCOG

