

Springfield Township

A community you can LIVE in!

Few communities can boast the recreational opportunities or scenic open spaces that exist in the Township of Springfield. Its population is focused when it comes to recognizing and enjoying the natural resources of the area while being supportive of government policies which have woven into them issues concerning conservation and preservation. Quality housing is nestled amongst the hills and trees and along the lakeshores. The township has acreage for horse farms. Lovely tree-lined dirt roads wind through the countryside. To add to a sense of place set back in time, the little hamlet of Davisburg - four corners within Springfield - has added just two buildings since 1900. Here are the Township Hall, post office, a candle factory, a real estate office, grocery and a steepled white-clapboard church. Centrally located just 20 minutes from either Flint or Pontiac, the two I-75 interchanges provide easy access from Springfield to the major population and industrial centers of Michigan.

Local Government

Supervisor

Mike Trout (248) 846-6502

Clerk

Laura Moreau (248) 846-6510

Clarkston Area Chamber of Commerce

Penny Shanks (248) 625-8055

www.springfield-twp.us/

Private Schools

Cedar Crest Schools, Springfield
Christian Academy

Public School Enrollment

Does not include public school academies

School District	Year	Enrollment
Brandon	2008 - 2009	3,451
Clarkston	2008 - 2009	8,138
Holly	2009 - 2010	3,842

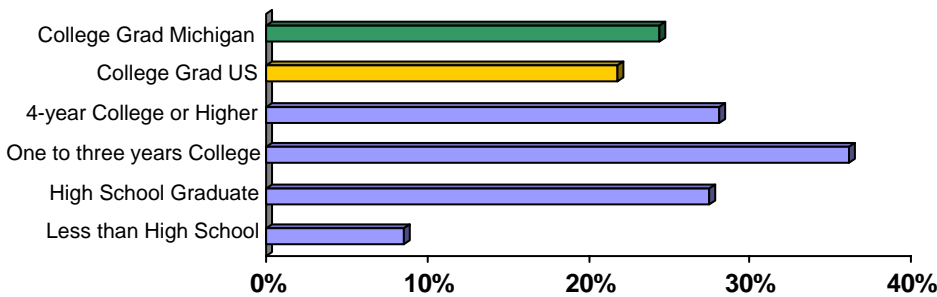
2009 Tax Rates

School District	Homestead	Non Homestead
Brandon	\$29.67	\$47.62
Clarkston	\$28.43	\$46.43
Holly	\$28.43	\$46.43

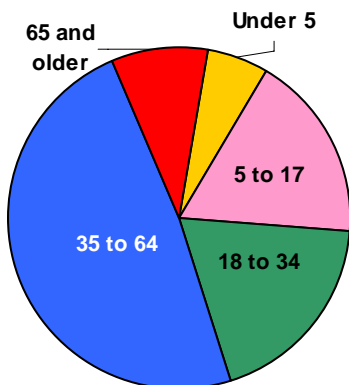
Colleges and Universities

None

Educational Attainment of People Over 25 Years of Age

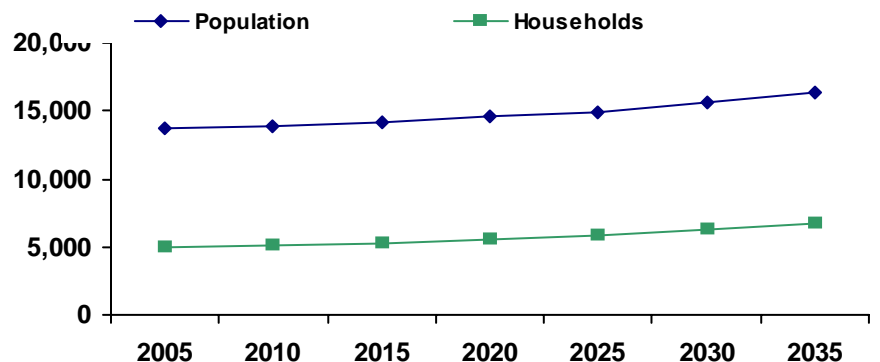


Population by Age



Source: U.S. Census Bureau

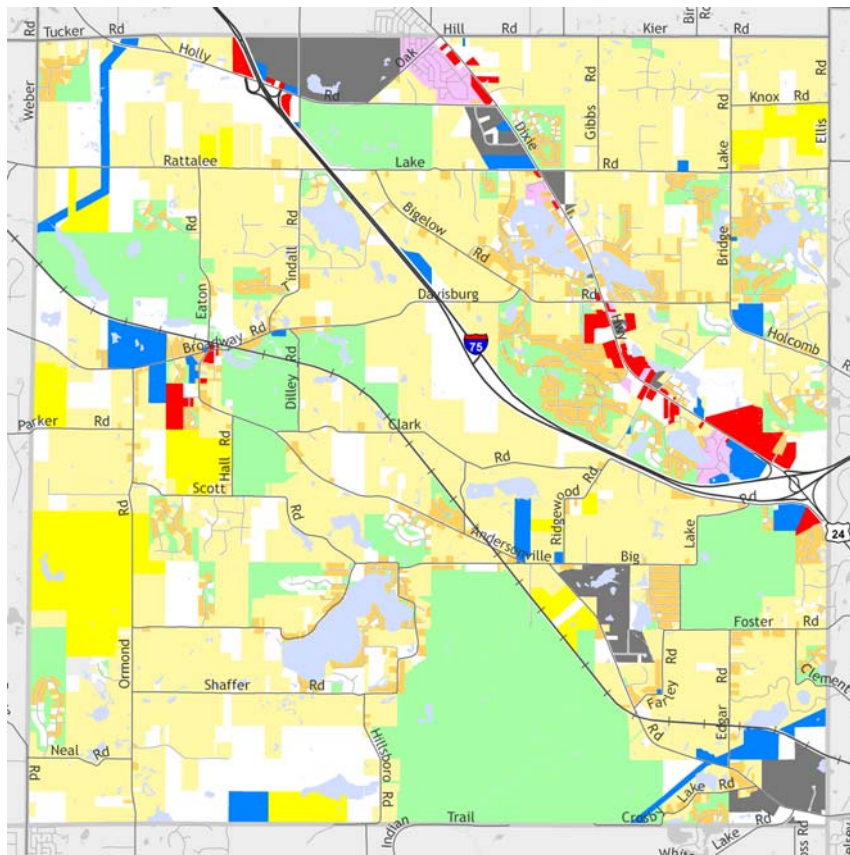
Population and Household Growth



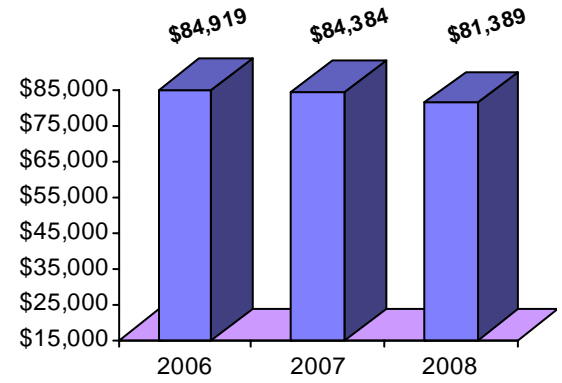
Source: SEMCOG

Springfield Township

Median Household Income



The information provided has been compiled from recorded deeds, plats, tax maps, surveys, and other public records. It is not a legally recorded map or survey and is not intended to be used as one. For more detailed land use information, go to <http://www.oakgov.com/luz>



Source: Claritas

Housing Sales

2010 # of Sales	51
2010 Median Sales \$	\$165,000
2010 Avg DOM	108
2009 # of Sales	179
2009 Median Sale \$	\$139,900
2009 Avg DOM	110
2008 # of Sales	137
2008 Median Sale \$	\$218,500
2008 Avg DOM	138

Realcomp (2010 through April only)

Top Employers

Rank	Company Name	Industry
1	Bordine Nursery	Ornamental nursery products
2	New Horizons Rehabilitation Services	Job training and related services
3	Oscar W Larson Co.	Special trade contractors
4	Clarkston School District	Primary education
5	Colombiere Center	Schools and educational services
6	Steel Tank & Fabricating Co.	Fabricated plate work (boiler shops)
7	Sheperds Hollow Golf Club	Public golf courses
8	Automation & Modular Components, Inc.	Conveyors and conveying equipment
9	Clawson Container Company	Tanks, storage
10	Randy Hosler Pontiac, Inc.	New and used car dealers

Manufactured Housing

Year	# of Parks	# of Units
2005	2	624
2007	2	624
2003	2	624

Source: SEMCOG

