

Rose Township

A community you can LIVE in!

The Township of Rose is a small rural community in northwest Oakland County with approximately 6,000 residents. There are 25+ lakes and many streams located in the Shiawassee watershed area, and vast expanses of environmentally sensitive areas and wetlands. It once was a flourishing farm community and continues to have some large active farms. Equestrian enthusiasts will find the township welcoming and suitable for the many activities horse ownership requires. About one quarter of the township on the western side is located in the Fenton Area School District with the remainder located in the Holly Area School District. Individuals moving into the township do so for its rural setting and natural beauty. The community is strongly committed to the preservation of its natural resources and open spaces.

Local Government

Supervisor

Alison K. Kalcec (248) 634-6889

Clerk

Debbie Miller (248) 634-8701

Treasurer

Susan J. Slaughter (248) 634-7291

www.rosetownship.com

Public School Enrollment

Does not include public school academies

School District	Year	Enrollment
Fenton	2009 - 2010	3,544
Holly	2009 - 2010	3,842

2009 Tax Rates

School District	Homestead	Non Homestead
Fenton	\$25.51	\$43.51
Holly	\$25.07	\$43.07

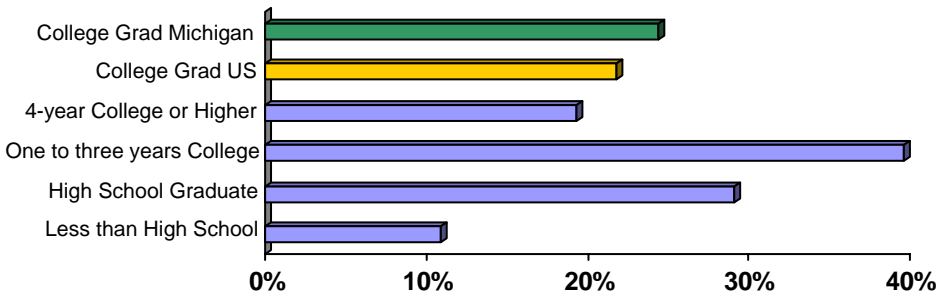
Private Schools

None

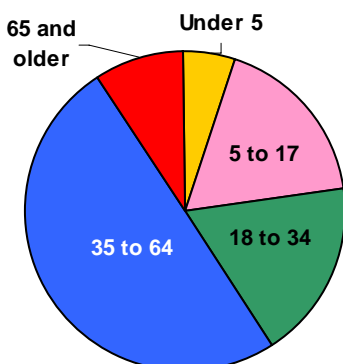
Colleges and Universities

None

Educational Attainment of People Over 25 Years of Age

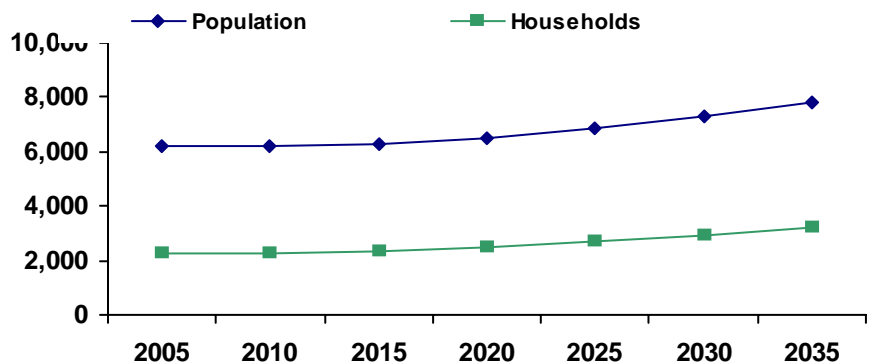


Population by Age



Source: U.S. Census Bureau

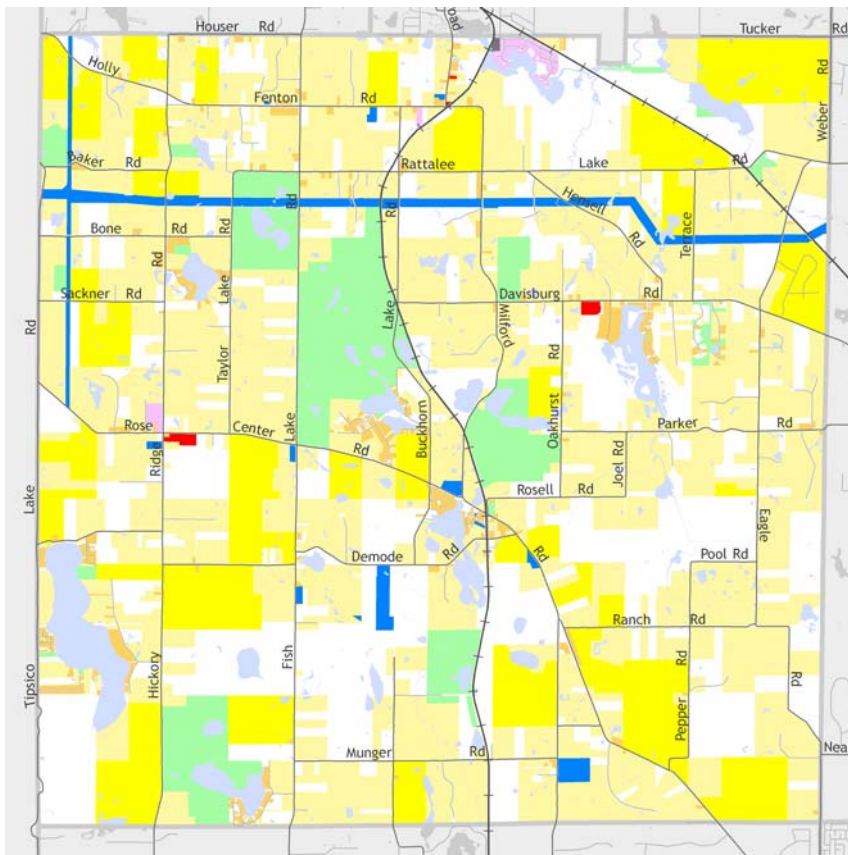
Population and Household Growth



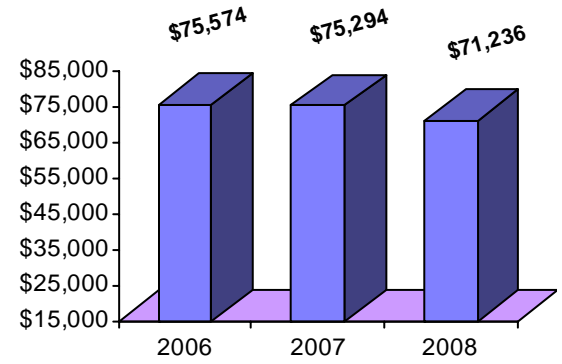
Source: SEMCOG

Rose Township

Median Household Income



The information provided has been compiled from recorded deeds, plats, tax maps, surveys, and other public records. It is not a legally recorded map or survey and is not intended to be used as one. For more detailed land use information, go to <http://www.oakgov.com/luz>



Source: Claritas

Housing Sales

2010 # of Sales	20
2010 Median Sales \$	\$118,950
2010 Avg DOM	130
2009 # of Sales	167
2009 Median Sale \$	\$119,900
2009 Avg DOM	130
2008 # of Sales	52
2008 Median Sale \$	\$134,000
2008 Avg DOM	112

Realcomp (2010 through April only)

Top Employers

Rank	Company Name	Industry
1	Holly School District	Primary education
2	Termine Tile, Inc.	Tile and terrazzo contractors
3	Township of Rose	Government services
4	American Aggregates	Lumber and building materials
5	JSS Construction	Single-family housing construction
6	Camp Ohiyesa YMCA	Civic and social organizations
7	Aqua Weed Control Inc.	Business services
8	All-Flatwork Flooring Inc.	Concrete work
9	Phil's Store LLC	Beer, wine, and liquor stores
10	Residential Alternative Inc.	Nursing and personal care

Manufactured Housing

Year	# of Parks	# of Units
2003	0	0
2005	0	0
2007	0	0

Source: SEMCOG

