

# Rochester

A community you can LIVE in!

Recognized as one of the top 100 places to live in America, the City is a vibrant Mainstreet community of 3.8 square miles. It became a village in 1869 and was incorporated as a city in 1967. Most of the original buildings comprising downtown are still in use, some registered as Michigan Historic Sites. Parks, walking trails and tree-lined streets in neighborhoods with modest homes give the city much of its charm. Paint Creek and the Clinton River flow through the city and Municipal Park provides a people focus for the City of Rochester. The city is governed by an elected, seven-member city council and headed by an appointed city manager. Rochester provides full city services including police, fire and water/sewer services. The Leader Dogs for the Blind staff can frequently be seen on the streets with dogs in training. September attracts thousands for the Art & Apples Festival. Rochester's Older Persons Commission is one of the many assets that show investment in its residents.

## Local Government

<b>Mayor</b>	
Stuart Bikson	(248) 651-9061
<b>Manager</b>	
Jaymes A. Vettraino	(248) 651-9061
<b>Clerk</b>	
Lee Ann O'Connor	(248) 651-9061
<a href="http://www.ci.rochester.mi.us/">www.ci.rochester.mi.us/</a>	

## Public School Enrollment

Does not include public school academies

School District	Year	Enrollment
Rochester	2007	14,845

## 2007 Tax Rates

School District	Homestead	Non Homestead
Rochester	\$34.11	\$52.11

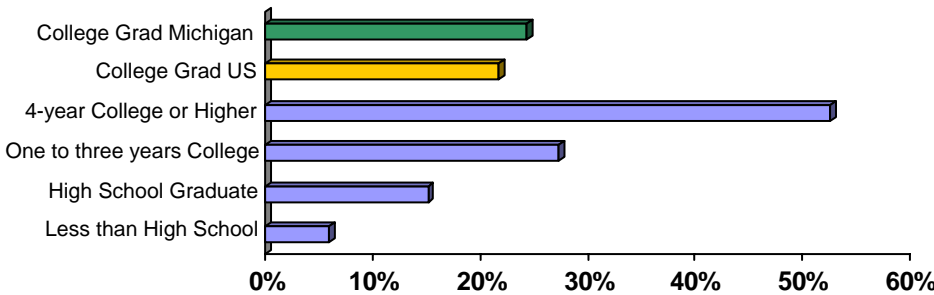
## Private Schools

Holy Family Regional School, St. John Lutheran

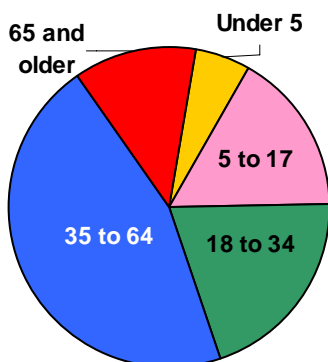
## Colleges and Universities

Oakland University

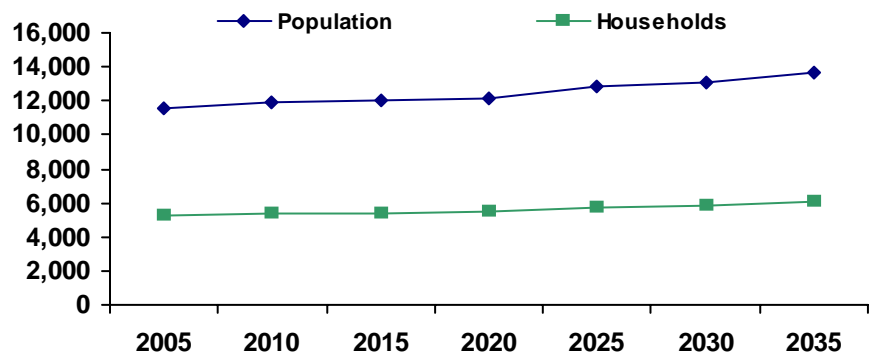
## Educational Attainment of People Over 25 Years of Age



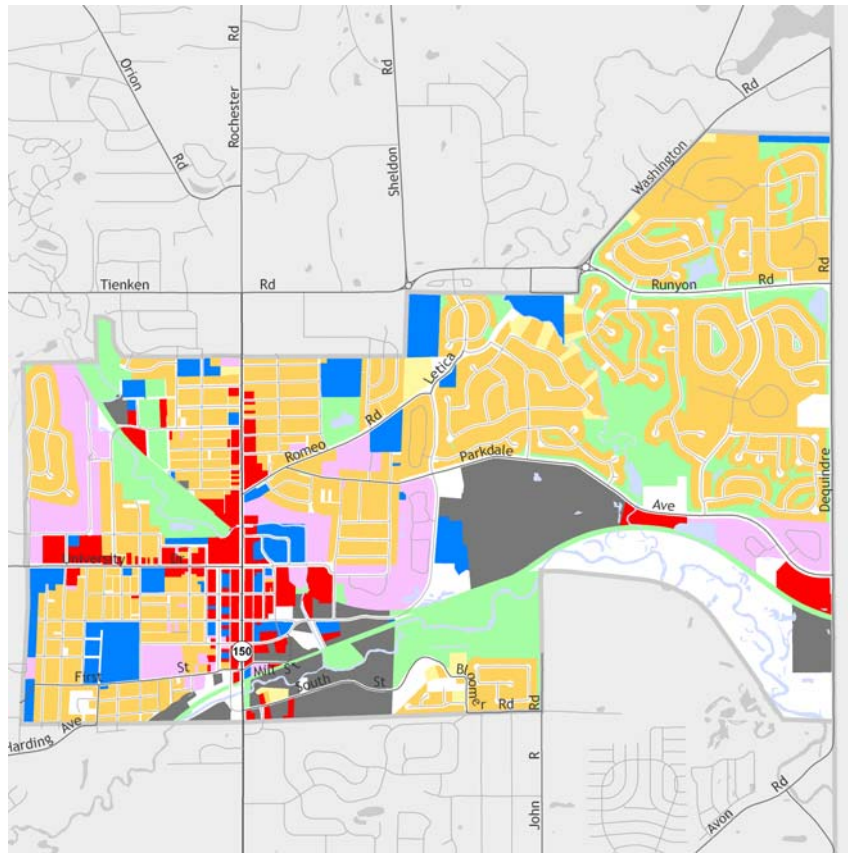
## Population by Age



## Population and Household Growth

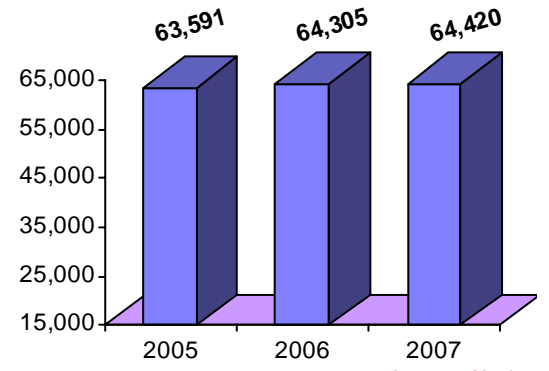


## Rochester



The information provided has been compiled from recorded deeds, plats, tax maps, surveys, and other public records. It is not a legally recorded map or survey and is not intended to be used as one. For more detailed land use information, go to <http://www.oakgov.com/luz>

## Median Household Income



Source: Claritas

## Housing Sales

2008 # of Sales	57
2008 Median Sales \$	\$238,000
2008 Avg DOM	153
2007 # of Sales	163
2007 Median Sale \$	\$306,000
2007 Avg DOM	129
2006 # of Sales	137
2006 Median Sale \$	\$325,000
2006 Avg DOM	118

2008 Data for Jan-Jun only

## Top Employers

Rank	Company Name	Industry
1	Rochester School District	Primary education
2	Rochester Hills Public Library	Libraries and archives
3	Superior Plastic, Llc	Surgical appliances and supplies
4	Kruse & Muer On Main	Eating places
5	Older Persons Community	Individual and family services
6	Royal Park Hotel	Hotels and motels
7	Saber Commercial Cleaning & Supply Inc	Building maintenance services
8	Mr. B's Food & Spirits	Drinking places
9	Rank Rewold & Son, Inc	Nonresidential construction
10	Harman Corporation	Current-carrying wiring devices

## Manufactured Housing

Year	# of Parks	# of Units
2003	0	0
2005	0	0
2007	0	0

Source: SEMCOG

