

Oakland Twp

A community you can LIVE in!

Oakland Township strives to stay beyond the reach of congestion and overcrowding, maintaining a rural setting. However, everything one would want in the way of culture, recreation, and shopping is nearby. Driving the backroads of Oakland Township one can imagine being in rural New England. The Township is firmly established as a high quality residential area. With well-established, gated communities, it contains elevated topography with views of the Paint Creek River Valley cutting through the Township. Paint Creek Trail follows its namesake through hills, fields, woodlands, and marshes. It has been hard-surfaced for jogging and biking. The trail connects the Village of Lake Orion with the City of Rochester. Part of the Bald Mountain State Recreation Area is located in the Township and Stoney Creek Metropark is nearby; both contribute to the rural development character of this community.

Local Government

Supervisor

Joan Fogler (248) 651-4440

Planning Coordinator

Ellen Witz (248) 651-4440

Clerk

Judy Workings (248) 651-4440

www.oaklandtownship.org/

Public School Enrollment

Does not include public school academies

School District	Year	Enrollment
Lake Orion	2007	7890
Rochester	2007	14845

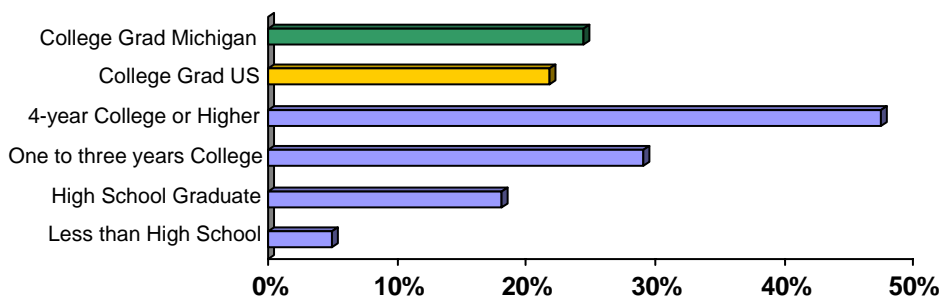
2007 Tax Rates

School District	Homestead	Non Homestead
Lake Orion	\$29.54	\$47.54
Rochester	\$27.23	\$45.23
Romeo	\$25.20	\$43.20

Private Schools

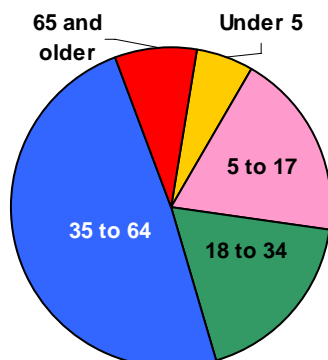
Oak Arbor New Church School,
Eagle Creek Academy

Educational Attainment of People Over 25 Years of Age

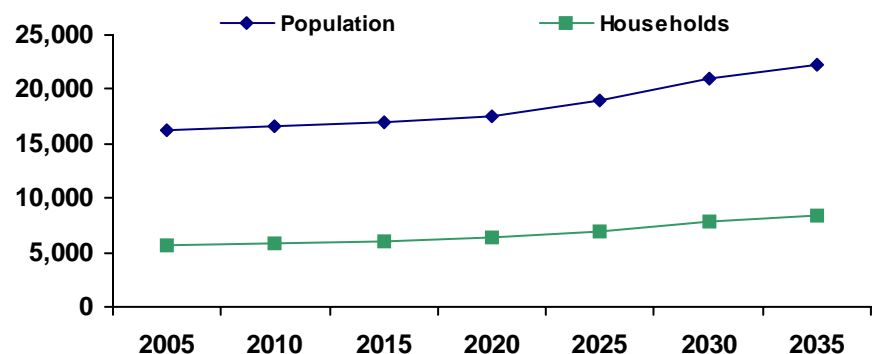


Colleges and Universities

Population by Age



Population and Household Growth

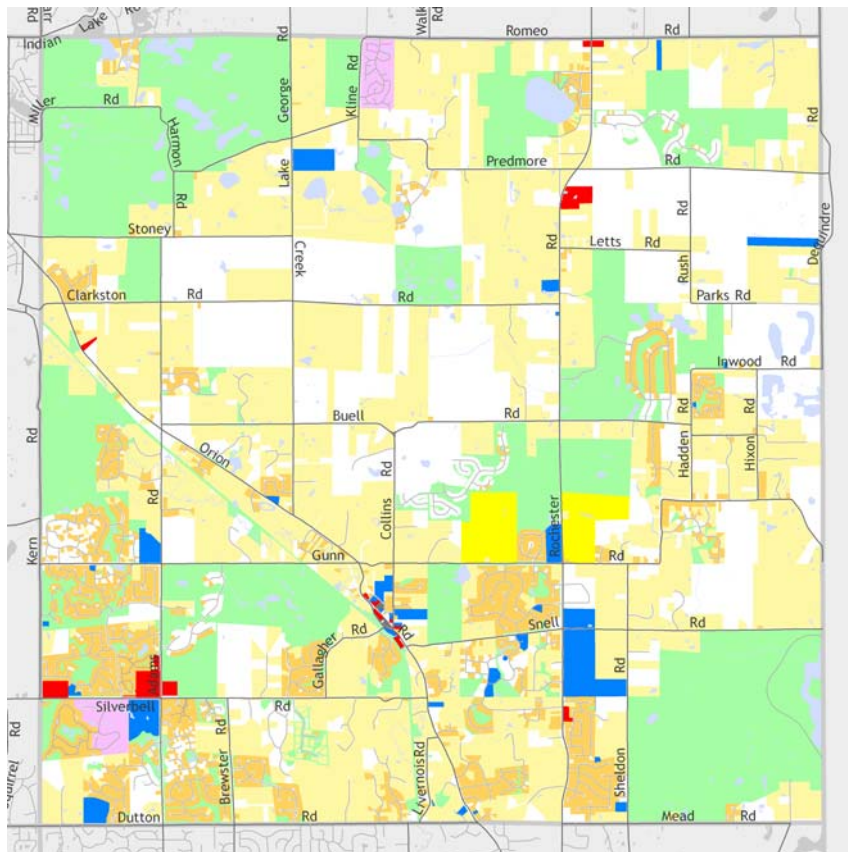


Source: U.S. Census Bureau

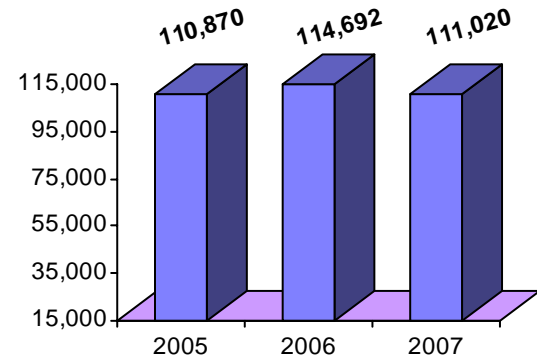
Source: SEMCOG

Oakland Twp

Median Household Income



The information provided has been compiled from recorded deeds, plats, tax maps, surveys, and other public records. It is not a legally recorded map or survey and is not intended to be used as one. For more detailed land use information, go to <http://www.oakgov.com/luz>



Source: Claritas

Housing Sales

2008 # of Sales	91
2008 Median Sales \$	\$334,000
2008 Avg DOM	142
2007 # of Sales	189
2007 Median Sale \$	\$375,000
2007 Avg DOM	151
2006 # of Sales	166
2006 Median Sale \$	\$420,000
2006 Avg DOM	144

Realcomp; 2008 Data for Jan-Jun only

Top Employers

Rank	Company Name	Industry
1	Rochester School District	Primary education
2	Michigan Institute For Health	Health and allied services
3	Christine Cerny	Management consulting services
4	Medical Network I, P C	Professional organizations
5	Hungry Howie's Pizza	Eating places
6	Taco Bell	Eating places
7	Blackheath Golf Club Inc	Public golf courses
8	Lakeside Electrical Contracting Inc	Electrical work
9	Eagle Creek Academy	Elementary and secondary schools
10	S & M Markets Inc	Grocery store

Manufactured Housing

Year	# of Parks	# of Units
2003	1	375
2005	1	375
2007	1	375

Source: SEMCOG

