

Oakland Township

A community you can LIVE in!

Oakland Township strives to stay beyond the reach of congestion and overcrowding, maintaining a rural setting. However, everything one would want in the way of culture, recreation, and shopping is nearby. Driving the backroads of Oakland Township one can imagine being in rural New England. The Township is firmly established as a high quality residential area. With well-established, gated communities, it contains elevated topography with views of the Paint Creek River Valley cutting through the Township. Paint Creek Trail follows its namesake through hills, fields, woodlands, and marshes. It has been hard-surfaced for jogging and biking. The trail connects the Village of Lake Orion with the City of Rochester. Part of the Bald Mountain State Recreation Area is located in the Township and Stoney Creek Metropark is nearby; both contribute to the rural development character of this community.

Local Government

Supervisor

Joan Fogler (248) 651-4440

Planning Coordinator

Ellen Witz (248) 651-4440

Clerk

Judy Workings (248) 651-4440

www.oaklandtownship.org/

Private Schools

Oak Arbor New Church School,
Eagle Creek Academy

Public School Enrollment

Does not include public school academies

School District	Year	Enrollment
Lake Orion	2008 - 2009	7,853
Rochester	2008 - 2009	14,953

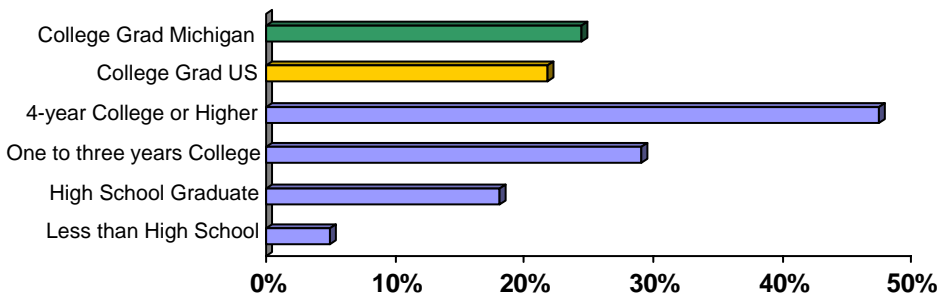
2009 Tax Rates

School District	Homestead	Non Homestead
Lake Orion	\$29.77	\$47.77
Rochester	\$27.46	\$45.46
Romeo	\$25.32	\$43.32

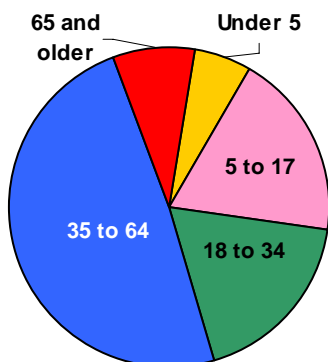
Colleges and Universities

None

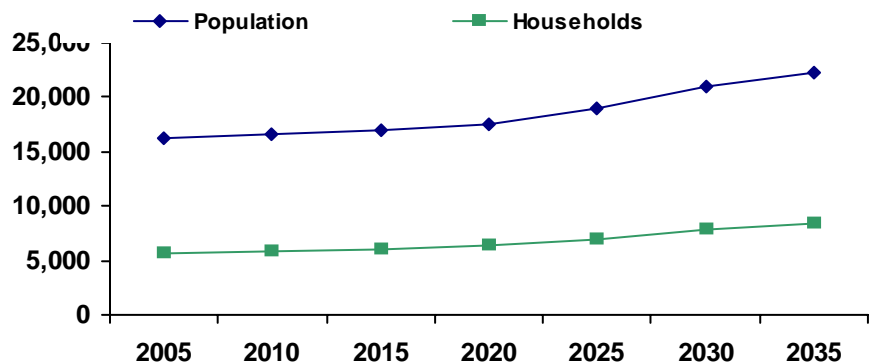
Educational Attainment of People Over 25 Years of Age



Population by Age

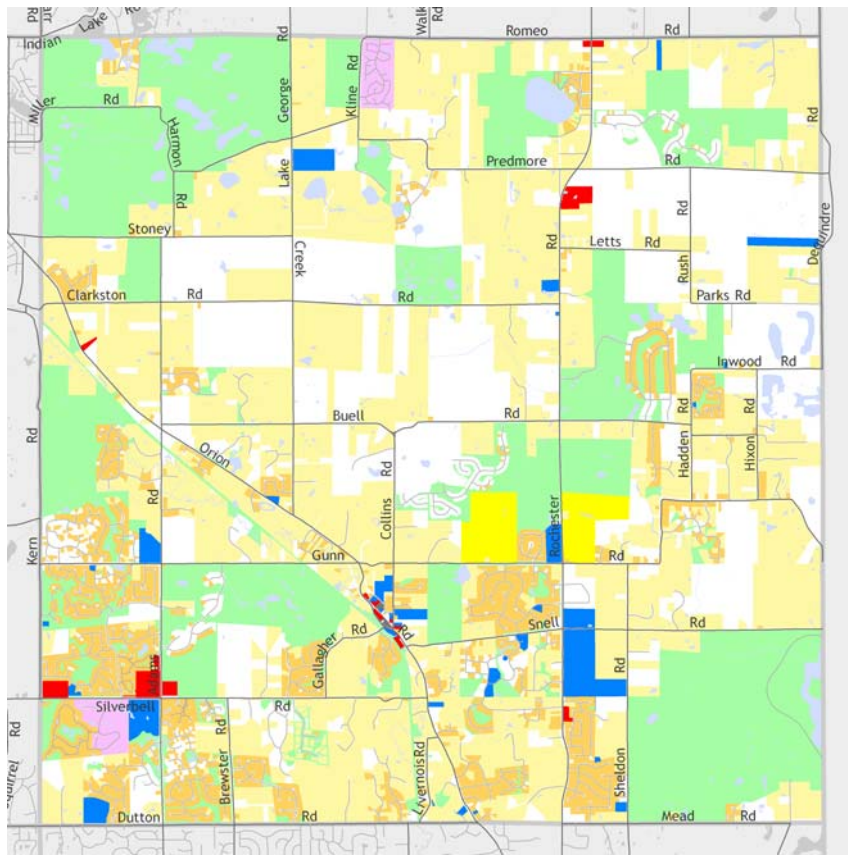


Population and Household Growth

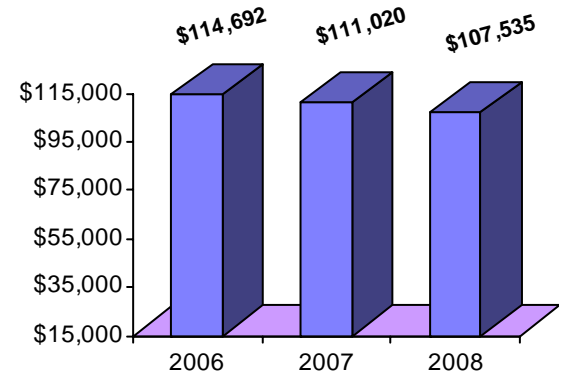


Oakland Township

Median Household Income



The information provided has been compiled from recorded deeds, plats, tax maps, surveys, and other public records. It is not a legally recorded map or survey and is not intended to be used as one. For more detailed land use information, go to <http://www.oakgov.com/luz>



Source: Claritas

Housing Sales

2010 # of Sales	65
2010 Median Sales \$	\$240,000
2010 Avg DOM	153
2009 # of Sales	177
2009 Median Sale \$	\$279,000
2009 Avg DOM	163
2008 # of Sales	200
2008 Median Sale \$	\$330,000
2008 Avg DOM	154

Realcomp (2010 through April only)

Top Employers

Rank	Company Name	Industry
1	Wal-Mart Stores, Inc.	Discount department stores
2	Rochester School District	Primary education
3	Michigan Institute for Health	Health and allied services
4	Medical Network I, P C	Professional organizations
5	Hungry Howie's Pizza	Limited-service restaurants
6	Blackheath Golf Club Inc.	Public golf courses
7	Taco Bell	Limited-service restaurants
8	Oakland Township Fire Department	Fire protection
9	Oakland Township	Government services
10	Eagle Creek Academy	Elementary and secondary schools
11	S & M Markets Inc.	Grocery stores

Manufactured Housing

Year	# of Parks	# of Units
2005	1	375
2007	1	375
2003	1	375

Source: SEMCOG

