

Oakland County

A community you can LIVE in!

Oakland County, home to a mix of urban and rural communities, with its 30 downtown areas and many scenic natural settings, provides a high quality of life for any lifestyle. Countless outdoor recreation opportunities are available including: 3 ski areas, 27 public fishing sites, over 60 public golf courses, more than 1468 lakes and approximately 89,000 acres of public recreation land. Significant entertainment and sports venues include DTE and Meadowbrook outdoor theaters, the Palace of Auburn Hills -- home to the Detroit Pistons, Cranbrook Institutions and the Detroit Zoological Park. Oakland County also ranks as the fourth wealthiest county in the nation among counties with populations of more than one million people. Like all of Michigan, the County enjoys the variety of four distinct seasons with an average temperature of 51 degrees Fahrenheit, a high of 77 degrees in July and a low of 23 in January.

Local Government

County Executive

L. Brooks Patterson (248) 858-1000

Community & Econ. Dev. Director

Maureen Krauss (248) 858-1278

Planning & Econ. Development Mgr

Daniel Hunter (248) 858-0720

www.oakgov.com

Private Schools

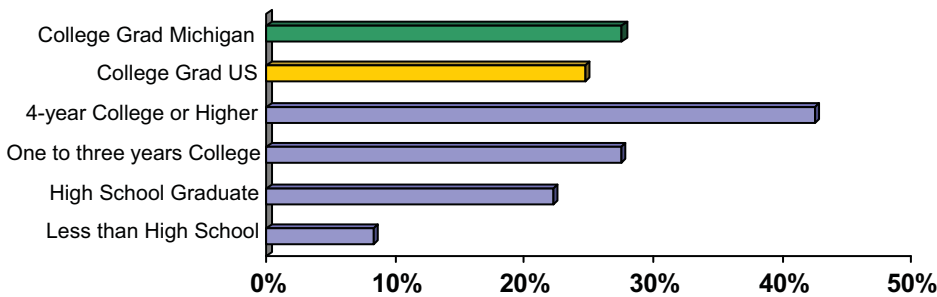
Over 100 private schools servicing the county

Public School Enrollment

Does not include public school academies

2009 Tax Rates

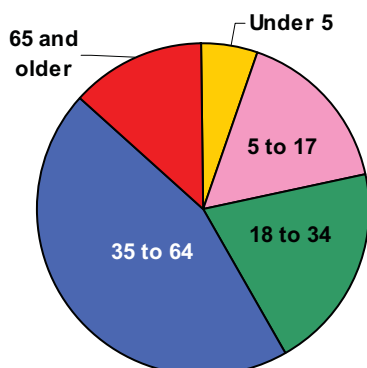
Educational Attainment of People Over 25 Years of Age



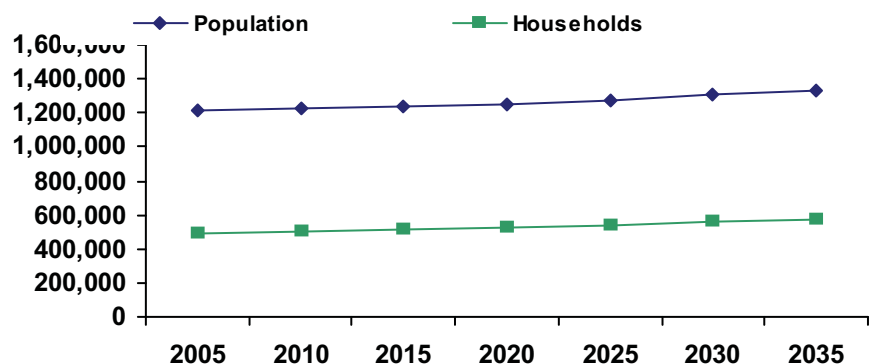
Colleges and Universities

Oakland University, 13 Colleges, 3 Satellite Campuses - Wayne State University, Michigan State University, Central Michigan University

Population by Age

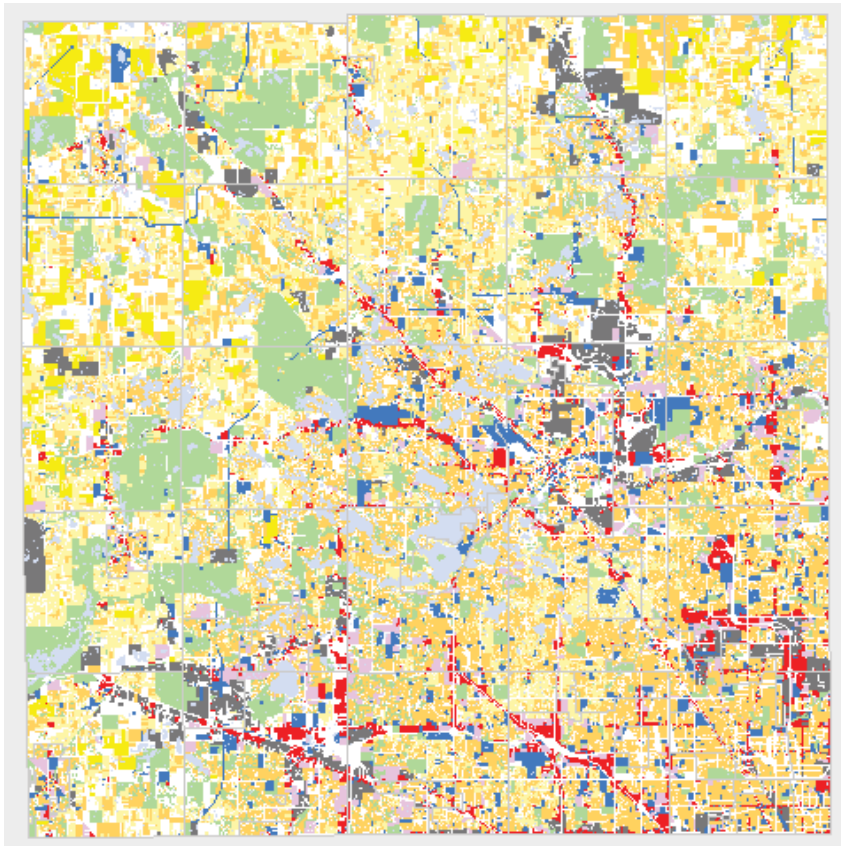


Population and Household Growth

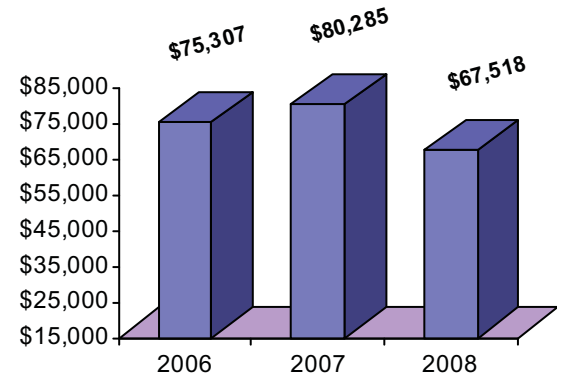


Oakland County

Median Household Income



The information provided has been compiled from recorded deeds, plats, tax maps, surveys, and other public records. It is not a legally recorded map or survey and is not intended to be used as one. For more detailed land use information, go to <http://www.oakgov.com/luz>



Source: Claritas

Housing Sales

2010 # of Sales	5,284
2010 Median Sales \$	\$101,738
2010 Avg DOM	107
2009 # of Sales	16,633
2009 Median Sale \$	\$96,621
2009 Avg DOM	115
2008 # of Sales	13,808
2008 Median Sale \$	\$137,825
2008 Avg DOM	131

Realcomp (2010 through April only)

Top Employers

Rank	Company Name	Industry
1	William Beaumont Hospital	General medical and surgical hospitals
2	General Motors Corporation	Automotive manufacturer
3	Chrysler LLC	Automotive manufacturer
4	St. John Health	General medical and surgical hospitals
5	Trinity Health Corp.	General medical and surgical hospitals
6	Electronic Data Systems Corp.	Information technology services
7	Blue Cross Blue Shield of Michigan	Group health plans
8	US Post Office	US postal services
9	Oakland County	Government services
10	Botsford Health Care	Health care organizations

Manufactured Housing

Year	# of Parks	# of Units
2003	65	18893
2005	65	18897
2007	63	18376

Source: SEMCOG

