

Oakland County

A community you can LIVE in!

Oakland County, home to a mix of urban and rural communities, with its 30 downtown areas and many scenic natural settings, provides a high quality of life for any lifestyle. Countless outdoor recreation opportunities are available including: 3 ski areas, 27 public fishing sites, over 60 public golf courses, more than 1468 lakes and approximately 89,000 acres of public recreation land. Significant entertainment and sports venues include DTE and Meadowbrook outdoor theaters, the Palace of Auburn Hills -- home to the Detroit Pistons, Cranbrook Institutions and the Detroit Zoological Park. Oakland County also ranks as the fourth wealthiest county in the nation among counties with populations of more than one million people. Like all of Michigan, the County enjoys the variety of four distinct seasons with an average temperature of 51 degrees Fahrenheit, a high of 77 degrees in July and a low of 23 in January.

Local Government

County Executive

L. Brooks Patterson (248) 858-1000

Community & Econ. Dev. Director

Doug Smith (248) 858-1278

Planning & Econ. Dev. Manager

Daniel Hunter (248) 858-0720

www.oakgov.com

Private Schools

Over 100 private schools servicing the county

Public School Enrollment

Does not include public school academies

School District	Year	Enrollment
Oakland County	2007	199,559

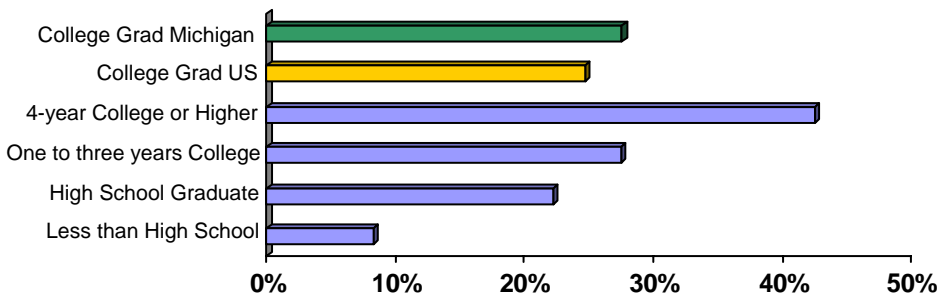
2007 Tax Rates

School District	Homestead	Non Homestead
Oakland County		

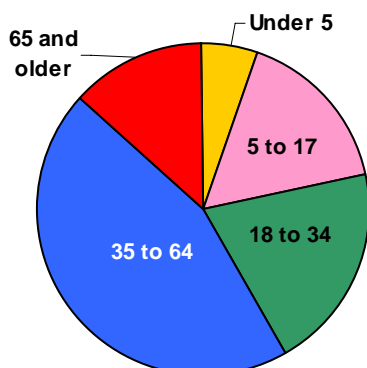
Colleges and Universities

Oakland University, 13 Colleges, 3 Satellite Campuses - Wayne State University, Michigan State University, Central Michigan University

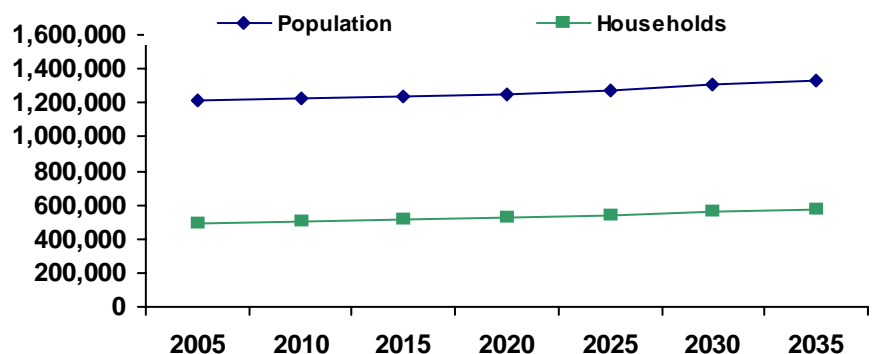
Educational Attainment of People Over 25 Years of Age



Population by Age

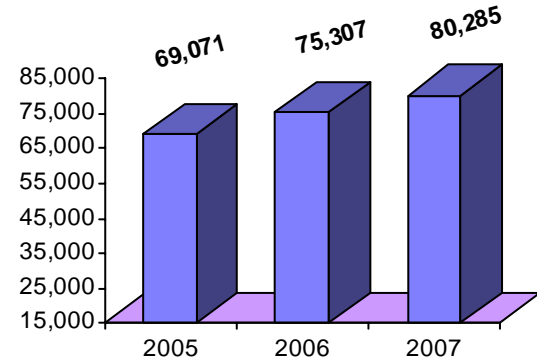
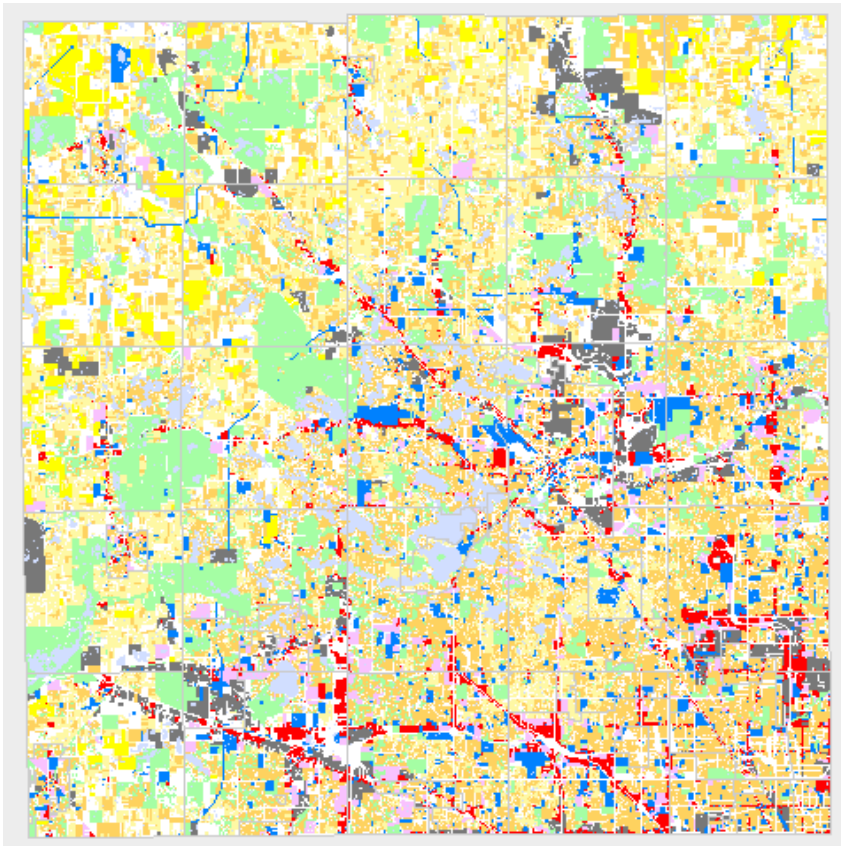


Population and Household Growth



Oakland County

Median Household Income



Source: Claritas

Housing Sales

2008 # of Sales	6013
2008 Median Sales \$	\$160,000
2008 Avg DOM	138
2007 # of Sales	11,961
2007 Median Sale \$	\$177,722
2007 Avg DOM	138
2006 # of Sales	12,799
2006 Median Sale \$	\$191,554
2006 Avg DOM	116

2008 Data for Jan-Jun only



The information provided has been compiled from recorded deeds, plats, tax maps, surveys, and other public records. It is not a legally recorded map or survey and is not intended to be used as one. For more detailed land use information, go to <http://www.oakgov.com/luz>

Top Employers

Rank	Company Name	Industry
1	General Motors Corporation	Automotive manufacturer
2	William Beaumont Hospital	Private nonprofit hospital
3	Chrysler LLC	Automotive manufacturer
4	Oakland County	Government
5	Trinity Health-Michigan	General medical hospitals
6	Electronic Data Systems Corp.	Provides information technology
7	U.S. Postal Service	Postal service
8	BCBSM Foundation	Group health plan
9	St. John Health	Health care organization
10	Botsford Health Care	Health care organization

Manufactured Housing

Year	# of Parks	# of Units
2003	65	18,893
2005	65	18,897
2007	63	18,376

Source: SEMCOG

