

Milford Twp

A community you can LIVE in!

The Township of Milford is a bedroom community. Most of the residential zoning is large parcels consisting of at least 1 1/2 to 3 acres. Because of the elevation, certain property sites offer beautiful panoramic views of the countryside. The restaurants and recreational facilities in the township attract visitors from nearby communities. Kensington Metropark has over 4,000 acres and is a spectacular area with a lake, woods, beaches, and trails for all kinds of outdoor recreational pursuits. Proud Lake Recreation Area has 1,100 acres and Camp Dearborn has 600 acres. An active Chamber of Commerce promotes the community and coordinates and sponsors such things as Citizen of the Year Award, a 4th of July parade and a Thanksgiving/Christmas Parade. Milford is unique in having an optional year-round school program for kindergarten through fifth grade students. Those in the program attend school for about 45 days followed by a 15-day vacation in a year-round schedule.

Local Government

Supervisor

Donald D. Green (248) 685-8731

Clerk

Colleen Schwartz (248) 685-8731

Huron Valley Chamber

Don Nurkala (248) 737-6375

www.milfordtownship.com/

Private Schools

Christ Lutheran, Highland Montessori, Milford Montessori, West Highland Christian, Friends Preschool and Kindergarten

Public School Enrollment

Does not include public school academies

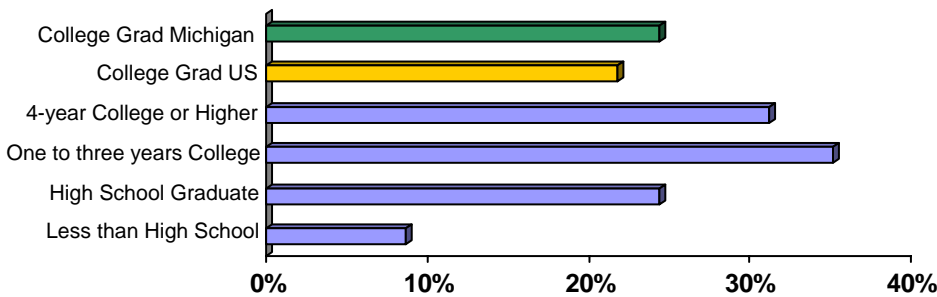
School District	Year	Enrollment
Huron Valley	2007	10,643
South Lyon	2007	7,006

2007 Tax Rates

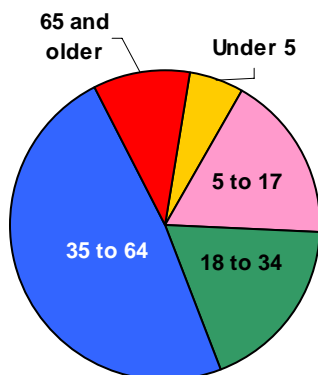
School District	Homestead	Non Homestead
Huron Valley	\$30.61	\$48.61
South Lyon	\$31.16	\$49.16

Colleges and Universities

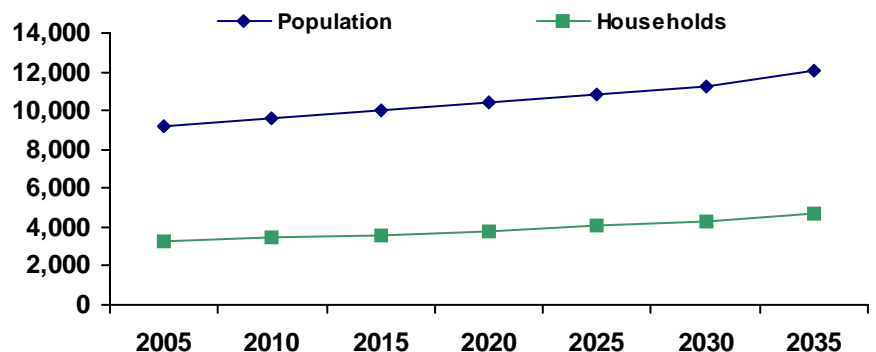
Educational Attainment of People Over 25 Years of Age



Population by Age



Population and Household Growth

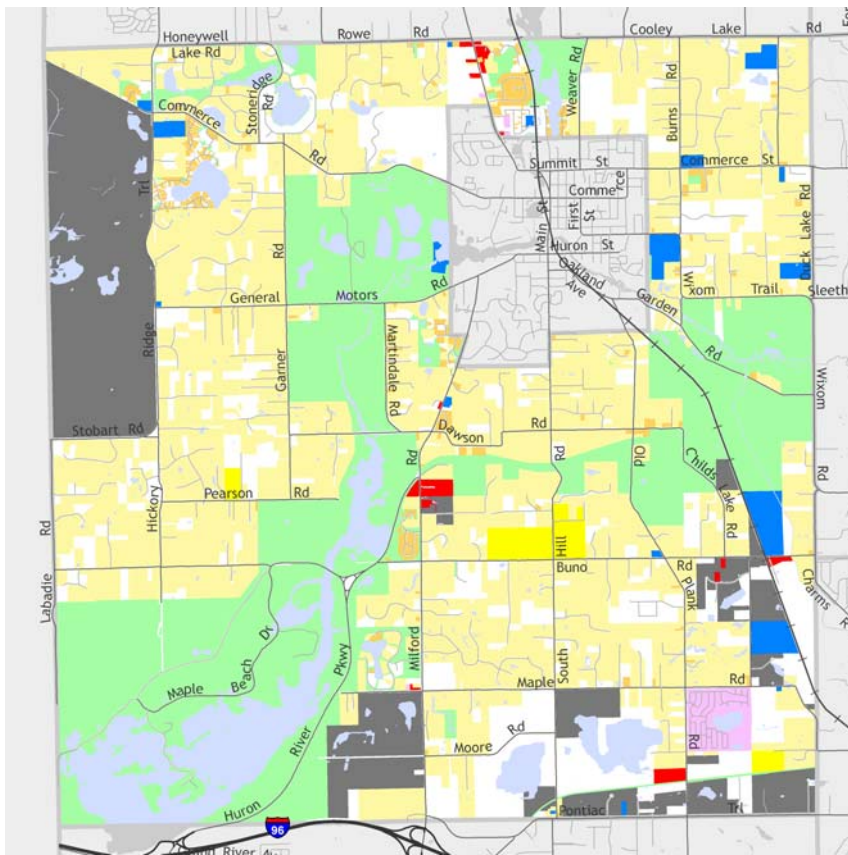


Source: U.S. Census Bureau

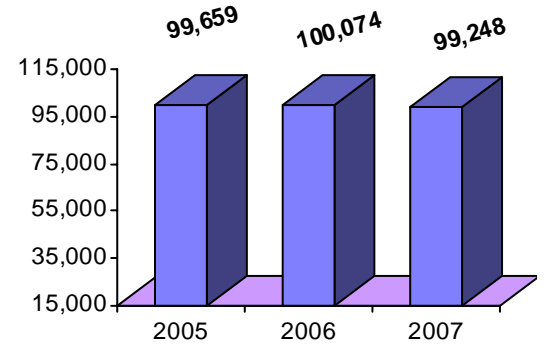
Source: SEMCOG

Milford Twp

Median Household Income



The information provided has been compiled from recorded deeds, plats, tax maps, surveys, and other public records. It is not a legally recorded map or survey and is not intended to be used as one. For more detailed land use information, go to <http://www.oakgov.com/luz>



Source: Claritas

Housing Sales

2008 # of Sales	40
2008 Median Sales \$	\$270,000
2008 Avg DOM	177
2007 # of Sales	81
2007 Median Sale \$	\$302,500
2007 Avg DOM	147
2006 # of Sales	na
2006 Median Sale \$	na
2006 Avg DOM	na

2008 Data for Jan-Jun only

Top Employers

Rank	Company Name	Industry
1	A B Heller Inc	Precision machine shop
2	T & M Asphalt Paving Inc	Highway and street construction
3	Donald E McNabb Company	Floor covering
4	Baker's of Milford Inc	Hall and restaurant
5	Midwest Management Company	Real estate agents and managers
6	Troy Clogg Landscape Assoc, LLC	Lawn and garden services
7	Cornwall Plumbing, Inc	Plumbing, heating, air-conditioning
8	Kennedy Industries, Inc	Pumps and pumping equipment
9	Quality Steel Products Inc	Mfg Iron/steel forgings motor vehicles
10	United Insurance Group Agency Inc	Insurance agents, brokers, & service

Manufactured Housing

Year	# of Parks	# of Units
2003	1	619
2005	1	619
2007	1	619

Source: SEMCOG

