

Milford Township

A community you can LIVE in!

The Township of Milford is a bedroom community. Most of the residential zoning is large parcels consisting of at least 1 1/2 to 3 acres. Because of the elevation, certain property sites offer beautiful panoramic views of the countryside. The restaurants and recreational facilities in the township attract visitors from nearby communities. Kensington Metropark has over 4,000 acres and is a spectacular area with a lake, woods, beaches, and trails for all kinds of outdoor recreational pursuits. Proud Lake Recreation Area has 1,100 acres and Camp Dearborn has 600 acres. An active Chamber of Commerce promotes the community and coordinates and sponsors such things as Citizen of the Year Award, a 4th of July parade and a Thanksgiving/Christmas Parade. Milford is unique in having an optional year-round school program for kindergarten through fifth grade students. Those in the program attend school for about 45 days followed by a 15-day vacation in a year-round schedule.

Local Government

Supervisor

Donald D. Green (248) 685-8731

Clerk

Colleen Schwartz (248) 685-8731

Huron Valley Chamber

Don Nurkala (248) 737-6375

www.milfordtownship.com/

Private Schools

Christ Lutheran, Highland Montessori, Milford Montessori, West Highland Christian, Friends Preschool and Kindergarten

Public School Enrollment

Does not include public school academies

School District	Year	Enrollment
Huron Valley	2008 - 2009	10,365
South Lyon	2008 - 2009	7,072

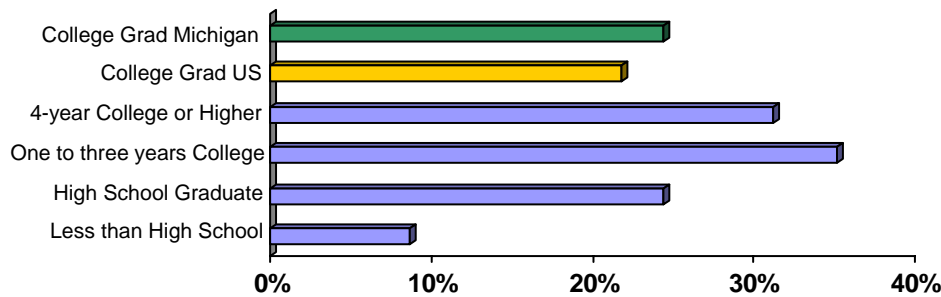
2009 Tax Rates

School District	Homestead	Non Homestead
Huron Valley	\$30.98	\$48.98
South Lyon	\$31.53	\$49.53

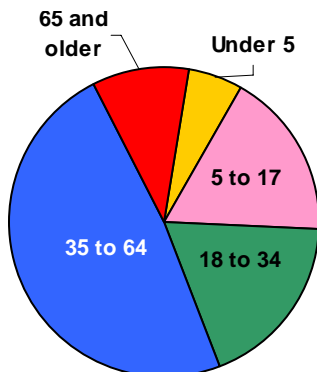
Colleges and Universities

None

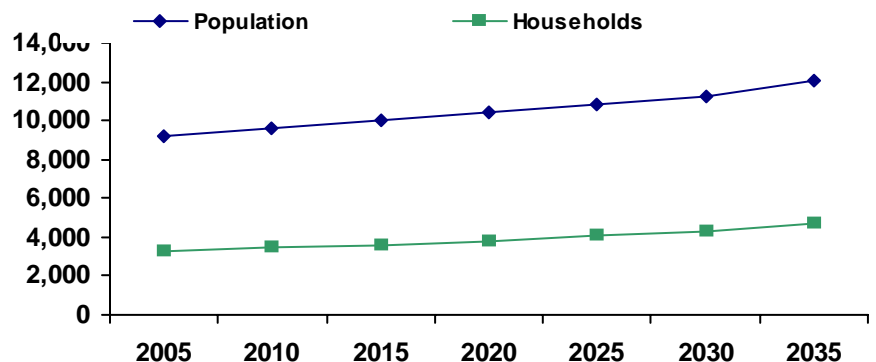
Educational Attainment of People Over 25 Years of Age



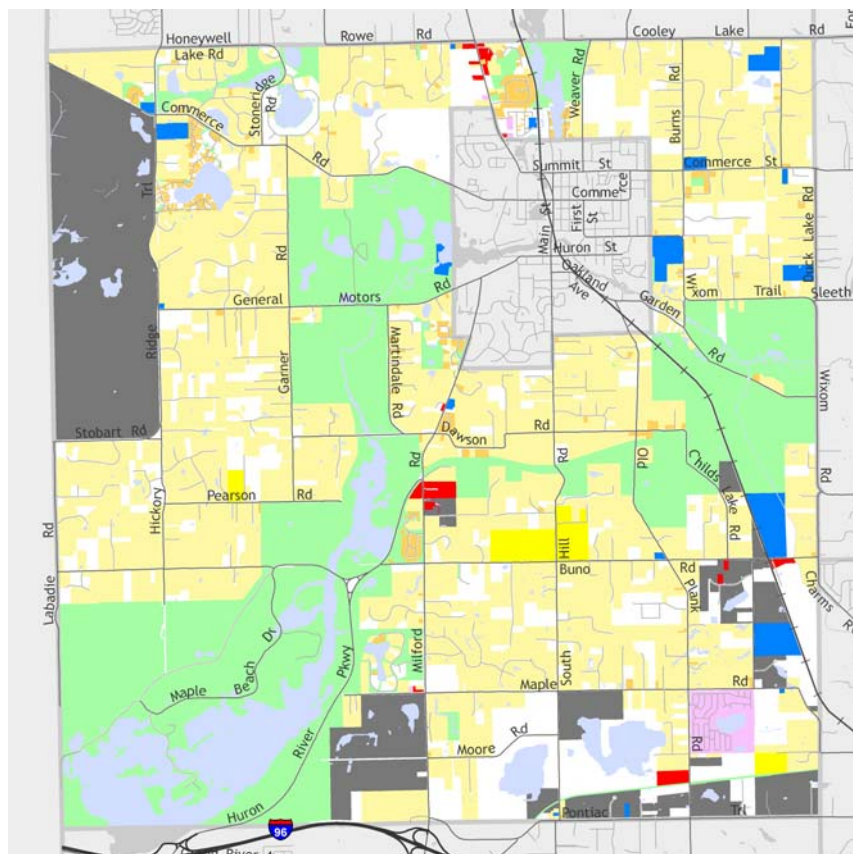
Population by Age



Population and Household Growth

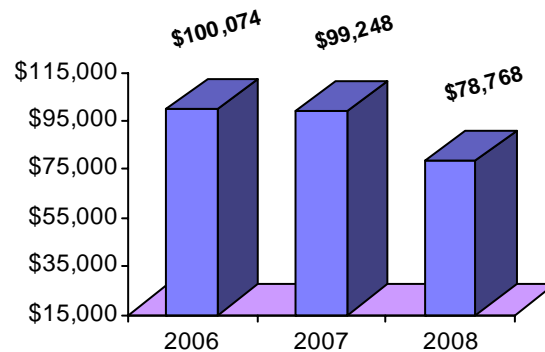


Milford Township



The information provided has been compiled from recorded deeds, plats, tax maps, surveys, and other public records. It is not a legally recorded map or survey and is not intended to be used as one. For more detailed land use information, go to <http://www.oakgov.com/luz>

Median Household Income



Source: Claritas

Housing Sales

2010 # of Sales	27
2010 Median Sales \$	\$175,000
2010 Avg DOM	118
2009 # of Sales	80
2009 Median Sale \$	\$235,599
2009 Avg DOM	142
2008 # of Sales	93
2008 Median Sale \$	\$232,500
2008 Avg DOM	140

Realcomp (2010 through April only)

Top Employers

Rank	Company Name	Industry
1	General Motors	Automotive research and test labs
2	T & M Asphalt Paving Inc.	Highway and street construction
3	West Hickory Haven	Skilled nursing care facilities
4	A B Heller Inc.	Precision machine shop
5	Mystic Creek Golf Club	Banquet center and golf club
6	Baker's of Milford Inc.	Banquet hall and restaurant
7	Donald E. McNabb Company	Floor covering
8	Troy Clogg Landscape Assoc, LLC	Lawn and garden services
9	Kennedy Industries, Inc.	Pumps and pumping equipment
10	United Insurance Group Agency, Inc.	Insurance agents

Manufactured Housing

Year	# of Parks	# of Units
2005	1	619
2007	1	619
2003	1	619

Source: SEMCOG

