

Holly Twp

A community you can LIVE in!

As the northwest most township bordering I-75, the Township of Holly has easy access to the greater Flint economy. Rail and highway links provide critical transportation for its budding manufacturing economy. The Township is primarily rural with residential development on large acre parcels. The abundance of recreational areas and facilities makes Holly township a major consideration for relocators looking for availability of outdoor activities. Lakeside Park is situated on Bush Lake. Adjacent to the park is the Holly Township swimming beach and boat launch. The shore area of Ganshaw Park has been preserved as a wildlife/nature area attracting a wide variety of birds and other wildlife. Bevins Lake is a year-round, sport fisherman spot. Camp Hasorec, owned and operated by Holly Schools, sits on 18 acres and has overnight camping in addition to an activities lodge and ice skating pond. Holly Township is home to The Michigan Renaissance Festival.

Local Government

Supervisor

Jesse Lambert (248) 634-9331

Clerk

Karen S. Winchester (248) 634-9331

Holly Area Chamber of Commerce

Mike Wagner (248) 215-7099

www.hollytownship.org/

Private Schools

Public School Enrollment

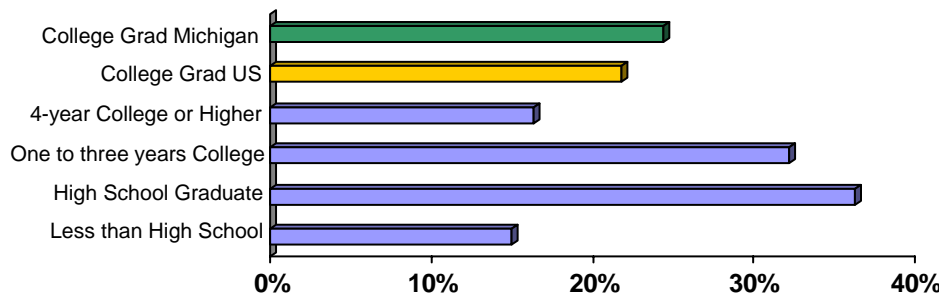
Does not include public school academies

School District	Year	Enrollment
Holly	2007	4181

2007 Tax Rates

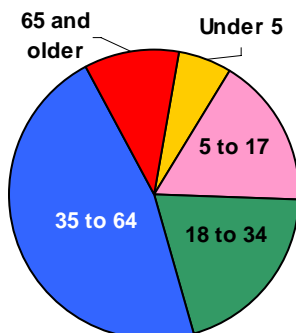
School District	Homestead	Non Homestead
Grand Blanc	\$24.66	\$42.66
Holly	\$25.04	\$43.04

Educational Attainment of People Over 25 Years of Age



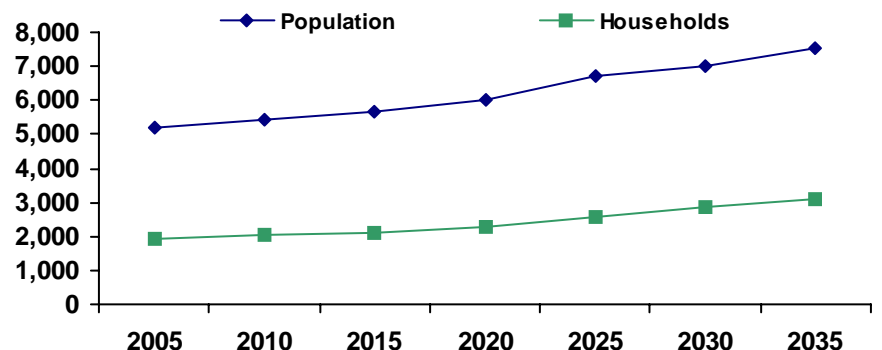
Colleges and Universities

Population by Age



Source: U.S. Census Bureau

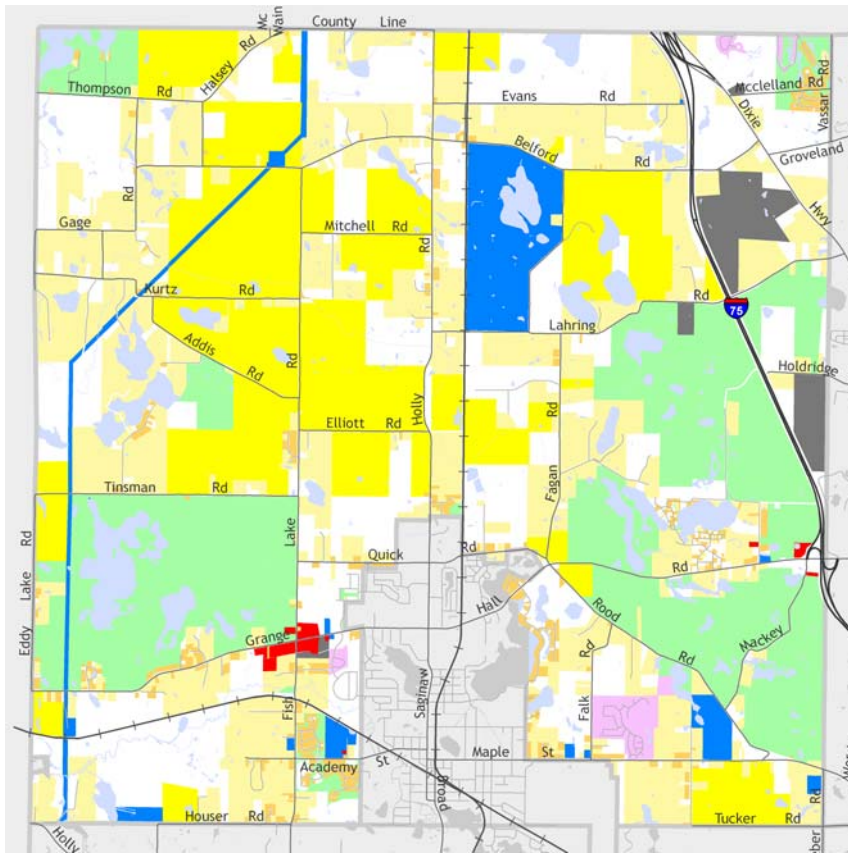
Population and Household Growth



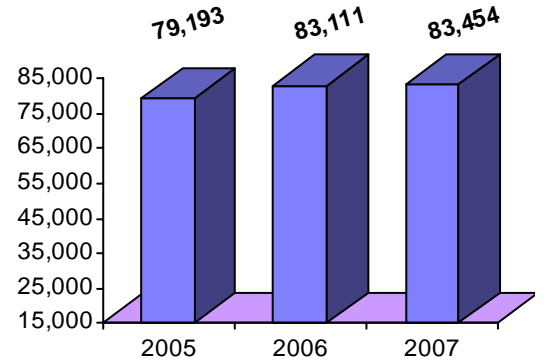
Source: SEMCOG

Holly Twp

Median Household Income



The information provided has been compiled from recorded deeds, plats, tax maps, surveys, and other public records. It is not a legally recorded map or survey and is not intended to be used as one. For more detailed land use information, go to <http://www.oakgov.com/luz>



Source: Claritas

Housing Sales

2008 # of Sales	28
2008 Median Sales \$	\$132,450
2008 Avg DOM	110
2007 # of Sales	59
2007 Median Sale \$	\$162,000
2007 Avg DOM	121
2006 # of Sales	67
2006 Median Sale \$	\$154,900
2006 Avg DOM	124

Realcomp; 2008 Data for Jan-Jun only

Top Employers

Rank	Company Name	Industry
1	Holly School District	Primary education
2	Genoak Materials Inc	Construction sand and gravel
3	Dave Patel	Eating places
4	Holly Academy	Private elementary school
5	North Oakland County Fire Authority	Fire protection
6	Rose Hill Center	Specialty outpatient clinics
7	I 75 Ford Llc	New and used car dealers
8	Groveland Oaks County Park	Amusement and recreation
9	Holly Township	Municipal offices
10	Steele's Landscaping Llc	Lawn and garden services

Manufactured Housing

Year	# of Parks	# of Units
2003	2	184
2005	2	184
2007	2	252

Source: SEMCOG

