

Holly Township

A community you can LIVE in!

As the northwest most township bordering I-75, the Township of Holly has easy access to the greater Flint economy. Rail and highway links provide critical transportation for its budding manufacturing economy. The Township is primarily rural with residential development on large acre parcels. The abundance of recreational areas and facilities makes Holly township a major consideration for relocators looking for availability of outdoor activities. Lakeside Park is situated on Bush Lake. Adjacent to the park is the Holly Township swimming beach and boat launch. The shore area of Ganshaw Park has been preserved as a wildlife/nature area attracting a wide variety of birds and other wildlife. Bevins Lake is a year-round, sport fisherman spot. Camp Hasorec, owned and operated by Holly Schools, sits on 18 acres and has overnight camping in addition to an activities lodge and ice skating pond. Holly Township is home to The Michigan Renaissance Festival.

Local Government

Supervisor

Jesse Lambert (248) 634-9331

Clerk

Karin S. Winchester (248) 634-9331

Holly Area Chamber of Commerce

Mike Wagner (248) 215-7099

www.hollytownship.org/

Private Schools

None

Public School Enrollment

Does not include public school academies

School District	Year	Enrollment
Holly	2009 - 2010	3,842

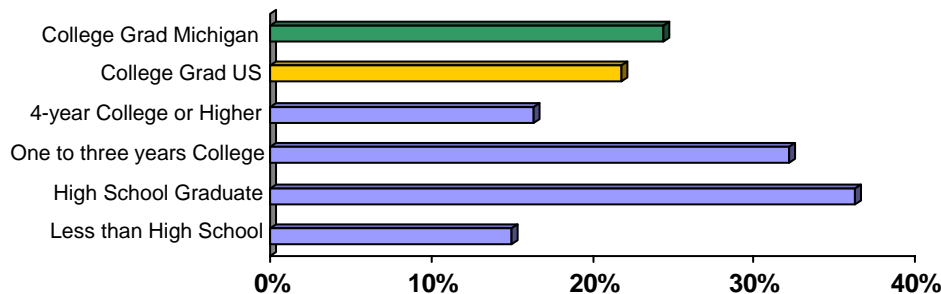
2009 Tax Rates

School District	Homestead	Non Homestead
Grand Blanc	\$24.76	\$42.76
Holly	\$25.14	\$43.14

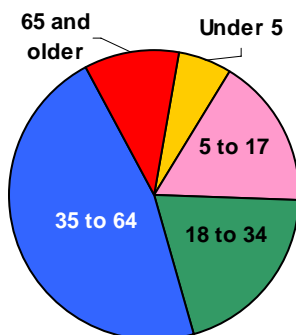
Colleges and Universities

None

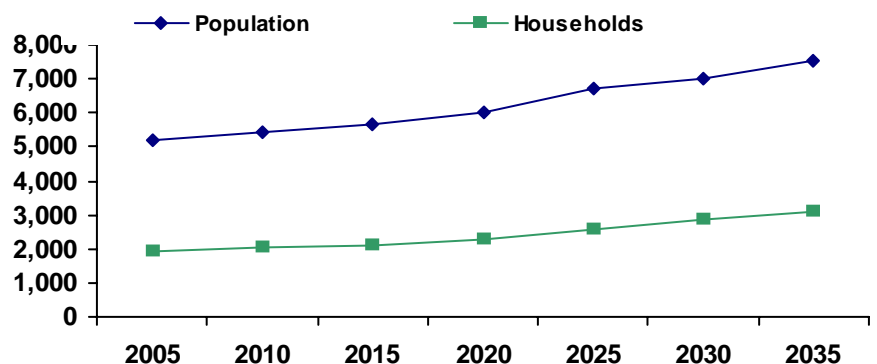
Educational Attainment of People Over 25 Years of Age



Population by Age

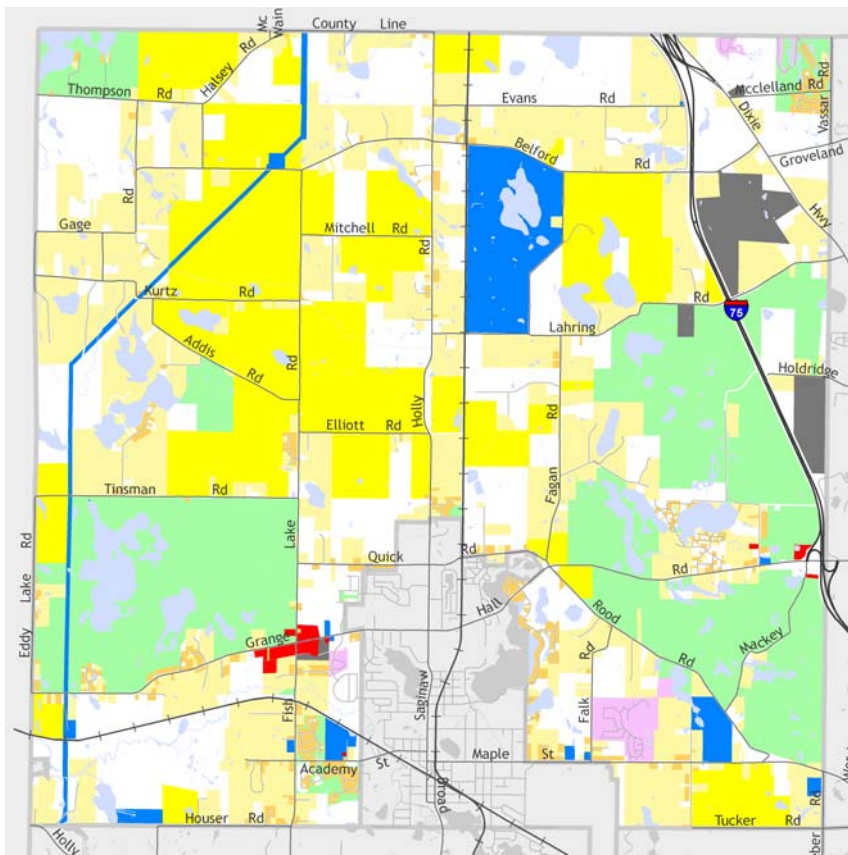


Population and Household Growth

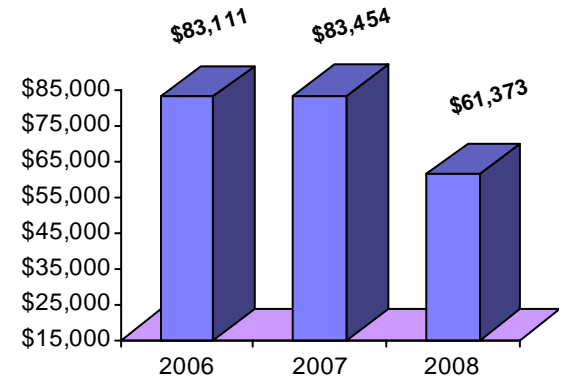


Holly Township

Median Household Income



The information provided has been compiled from recorded deeds, plats, tax maps, surveys, and other public records. It is not a legally recorded map or survey and is not intended to be used as one. For more detailed land use information, go to <http://www.oakgov.com/luz>



Source: Claritas

Housing Sales

2010 # of Sales	32
2010 Median Sales \$	\$84,000
2010 Avg DOM	81
2009 # of Sales	94
2009 Median Sale \$	\$109,000
2009 Avg DOM	122
2008 # of Sales	73
2008 Median Sale \$	\$135,000
2008 Avg DOM	136

Realcomp (2010 through April only)

Top Employers

Rank	Company Name	Industry
1	Holly School District	Secondary education
2	Genoak Materials Inc.	Construction sand and gravel
3	Holly Academy	Private elementary school
4	North Oakland Fire Authority	Fire protection
5	Groveland Oaks County Park	Amusement and recreation
6	Rose Hill Center	Specialty outpatient clinics
7	Tri-City Aggregates, Inc.	Construction sand and gravel
8	Bramblewood Golf Course	Public golf course
9	Inergy, L P	Propane gas retailer and wholesaler
10	Holly Township	Government services

Manufactured Housing

Year	# of Parks	# of Units
2005	2	184
2007	2	252
2003	2	184

Source: SEMCOG

