

# Groveland Twp

A community you can LIVE in!

Country living, rural agriculture, and large state recreation land holdings provide the undeveloped rural character of this township. The Township of Groveland is a favorite location for church, educational and youth organization camps. Nestled within its expansive greenways is Groveland Oaks County Park. This 360-acre facility offers picnicking, swimming and family camping. The park also has boat rentals, bike rentals and a spiraling waterslide. The abundance of recreational areas and facilities makes Groveland a major consideration for relocators looking for availability of outdoor activities.

## Local Government

### Supervisor

Robert DePalma (248) 634-4152

### Planning Coordinator

Judy Schulte (248) 634-4152

### Clerk

Pamela Mazich (248) 634-4152

[www.grovelandtownship.net/](http://www.grovelandtownship.net/)

## Public School Enrollment

Does not include public school academies

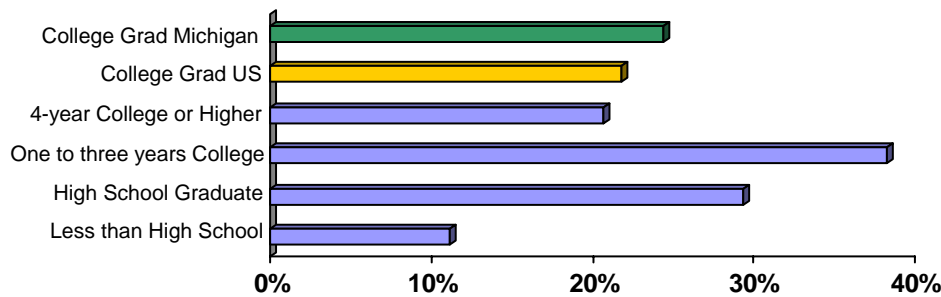
School District	Year	Enrollment
Brandon	2007	3,652
Holly	2007	4,181

## 2007 Tax Rates

School District	Homestead	Non Homestead
Brandon	\$28.34	\$46.29
Goodrich	\$29.11	\$46.48
Holly	\$27.10	\$45.10

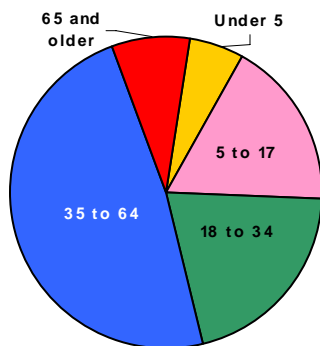
## Private Schools

## Educational Attainment of People Over 25 Years of Age

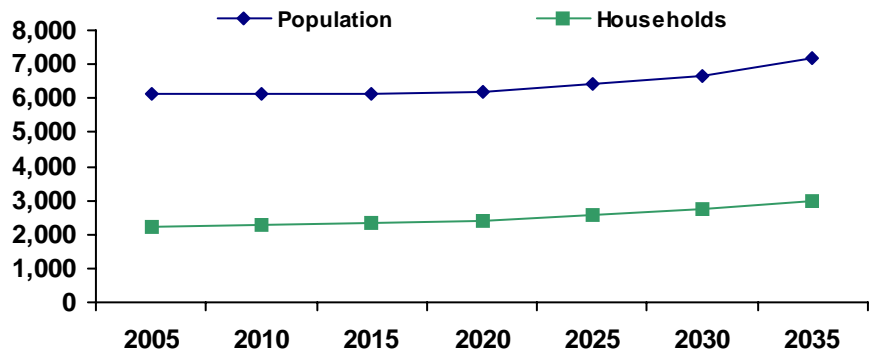


## Colleges and Universities

## Population by Age



## Population and Household Growth

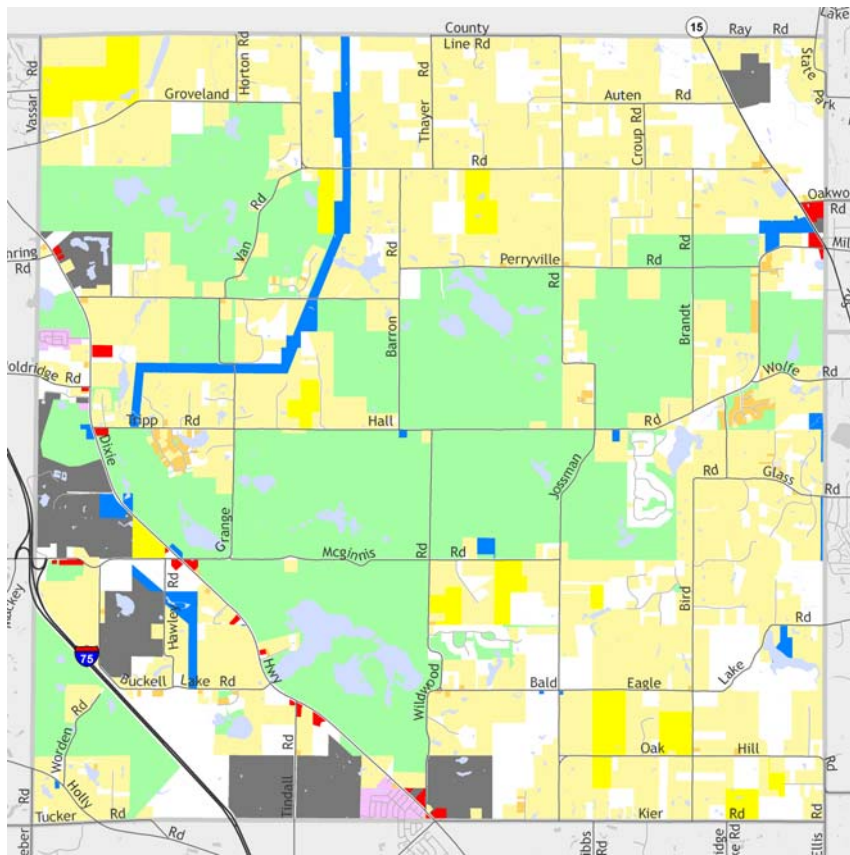


Source: U.S. Census Bureau

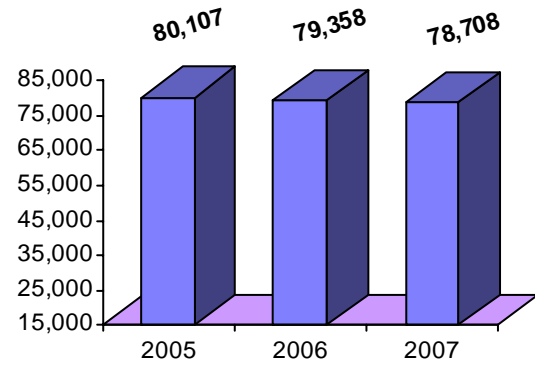
Source: SEMCOG

## Groveland Twp

## Median Household Income



The information provided has been compiled from recorded deeds, plats, tax maps, surveys, and other public records. It is not a legally recorded map or survey and is not intended to be used as one. For more detailed land use information, go to <http://www.oakgov.com/luz>



Source: Claritas

## Housing Sales

<b>2008 # of Sales</b>	21
<b>2008 Median Sales \$</b>	\$210,000
<b>2008 Avg DOM</b>	73
<b>2007 # of Sales</b>	30
<b>2007 Median Sale \$</b>	\$223,000
<b>2007 Avg DOM</b>	167
<b>2006 # of Sales</b>	29
<b>2006 Median Sale \$</b>	\$240,000
<b>2006 Avg DOM</b>	124

2008 Data for Jan-Jun only

## Top Employers

Rank	Company Name	Industry
1	A S T Inc	Electronic computers
2	State Wire and Terminal Inc	Electrical apparatus and equipment
3	Tamarack Camps Retreat Outing	Sporting and recreational camps
4	Timberline Roofing	Roofing contractor
5	Township of Groveland	Municipal offices
6	Simms Chevrolet Motors Inc	Automobiles, new and used
7	Butzel Conference Center	Sporting and recreational camps

## Manufactured Housing

Year	# of Parks	# of Units
2003	2	490
2005	2	490
2007	2	490

Source: SEMCOG

