

Franklin

A community you can LIVE in!

The Village of Franklin, frequently referred to as the town that time forgot, is a small residential community housing a little over 1,000 families within its 2.7 square miles of gently sloping, winding roadways which are banked by tall trees and hedgerows. The Village is successful in maintaining a rural atmosphere amidst a sea of commercial development. Downtown is at a bend and dip in the road with a handful of delightful clapboard buildings serving as the central shopping district. A cider mill, fenced properties with horse barns and a steepled church facing a commons state the New England simplicity of look. Annual pumpkin sales, the Labor Day Art (on the green) Fair and an old fashioned Christmas walk attest the residents relish their setting. The Franklin Historical Society and a branch of the Women's National Federation and Garden Association have active memberships. This island of green is cherished and steadfastly protected by its residents.

Local Government

Council President

H. Fred Gallasch (248) 626-9666

Administrator

Jon Stoppels (248) 626-9666

Clerk

Eileen Pulker (248) 626-9666

www.franklin.mi.us/

Private Schools

Huda School, Artstart Montessori Academy

Public School Enrollment

Does not include public school academies

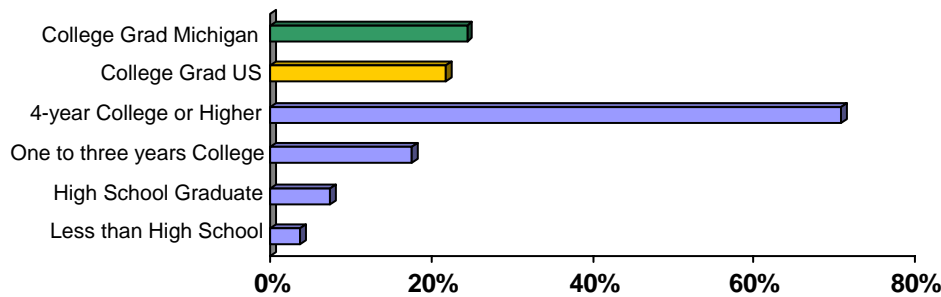
School District	Year	Enrollment
Birmingham	2007	8,129

2007 Tax Rates

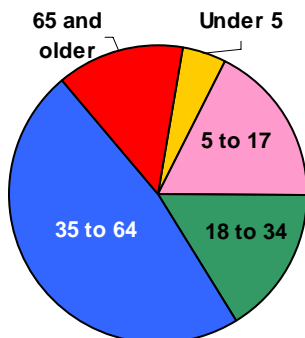
School District	Homestead	Non Homestead
Birmingham	\$33.98	\$43.82

Colleges and Universities

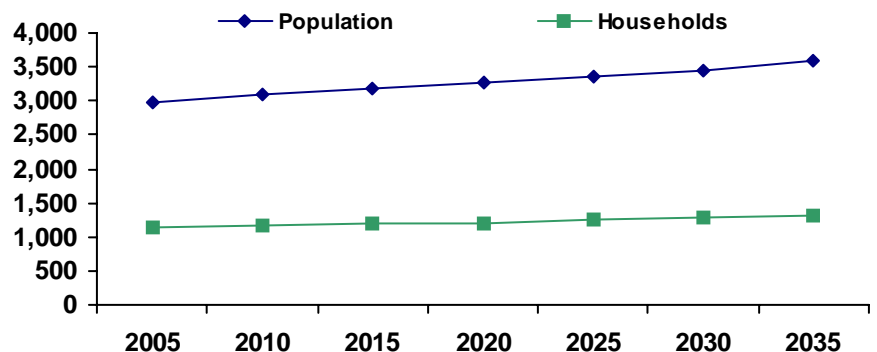
Educational Attainment of People Over 25 Years of Age



Population by Age



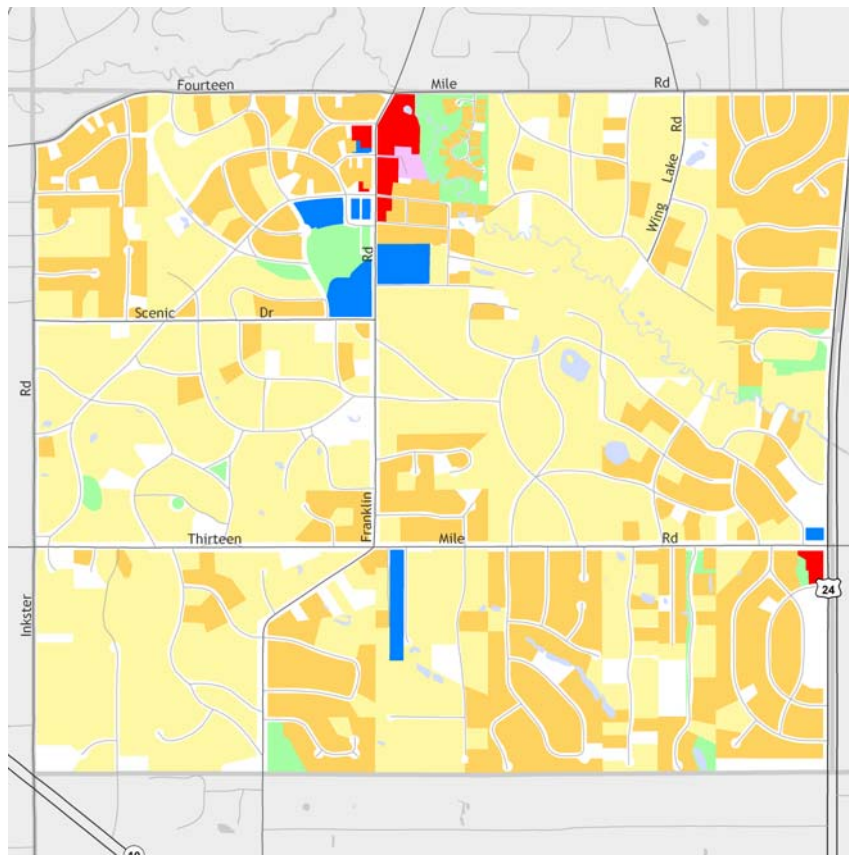
Population and Household Growth



Source: U.S. Census Bureau

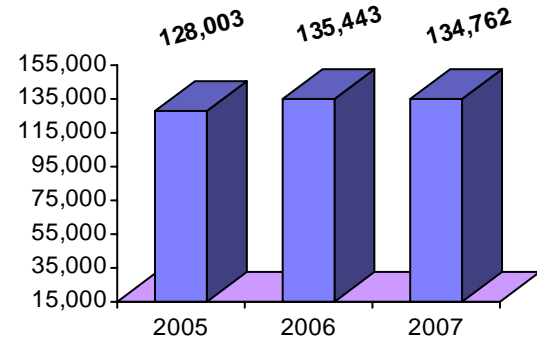
Source: SEMCOG

Franklin



The information provided has been compiled from recorded deeds, plats, tax maps, surveys, and other public records. It is not a legally recorded map or survey and is not intended to be used as one. For more detailed land use information, go to <http://www.oakgov.com/luz>

Median Household Income



Source: Claritas

Housing Sales

2008 # of Sales	12
2008 Median Sales \$	\$310,000
2008 Avg DOM	258
2007 # of Sales	31
2007 Median Sale \$	\$405,000
2007 Avg DOM	185
2006 # of Sales	34
2006 Median Sale \$	\$435,000
2006 Avg DOM	122

2008 Data for Jan-Jun only

Top Employers

Rank	Company Name	Industry
1	Elbows & Derriers Inc.	Construction site cleanup
2	Huda School and Montessori	Private school
3	Franklin Bingham Fire Dept.	Fire department
4	Perlmutter-Freiwald, Inc	Furniture stores
5	Worldwide Investment Association	Real estate agents and managers
6	Perlmutter Freiwald Flowers Inc	Florists
7	Village of Franklin	Municipal offices
8	Johnson Landscaping Inc	Landscape counseling and planning
9	Cambridge Connections, Inc	Management services
10	Northern Financial Advisors	Investment advice

Manufactured Housing

Year	# of Parks	# of Units
2003	0	0
2005	0	0
2007	0	0

Source: SEMCOG

