

# Bloomfield Township

A community you can LIVE in!

The Charter Township of Bloomfield, incorporated in 1827, was the first township to be established in Oakland County. Today, it encompasses 25 square miles and has a population of 43,000. The natural beauty of the township, with its winding roads, rolling hills and tranquil lakes, lends a uniquely attractive setting to the 17,000 fine homes and exclusive subdivisions within its boundaries. Classy and upbeat shopping are part of this prestigious residential community. Home to many Corporate America managers and business owners, success is the way of life in the Township of Bloomfield. Residential as well as retail development, has been strong since the mid 1980's and continues at a moderate pace providing luxury housing and business opportunities. The magnificent Kirk in the Hills Presbyterian Church is a striking landmark. Bloomfield Township is also home to many exclusive country clubs including the nationally known Oakland Hills Country Club.

## Local Government

### Supervisor

Dave Payne (248) 433-7708

### Clerk

Janet M. Roncelli (248) 433-7702

### Planner Director

Patricia Voelker (248) 433-7795

[www.bloomfieldtpw.org/](http://www.bloomfieldtpw.org/)

## Private Schools

Acadia Montessori School, Brother Rice Boys, Detroit Country Day Schools, Franklin Christian Pre School, The Lyceum Academy, Marian High, St. Regis

## Public School Enrollment

Does not include public school academies

School District	Year	Enrollment
Avondale	2008 - 2009	3,827
Birmingham	2008 - 2009	8,095
Bloomfield Hills	2008 - 2009	5,643
Pontiac	2008 - 2009	7,318

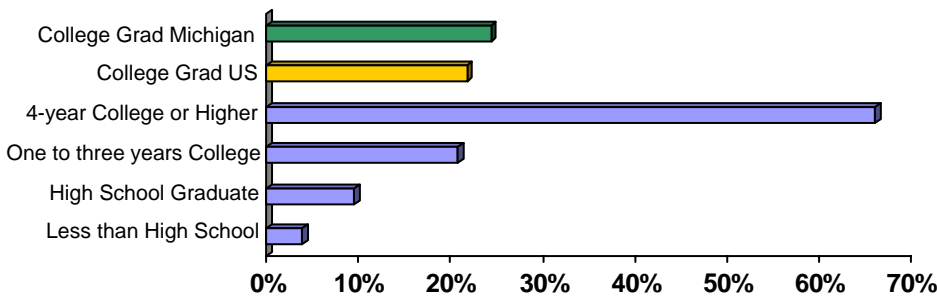
## 2009 Tax Rates

School District	Homestead	Non Homestead
Avondale	\$36.16	\$53.01
Birmingham	\$38.79	\$48.31
Bloomfield Hills	\$36.53	\$47.56
Pontiac	\$29.26	\$47.26

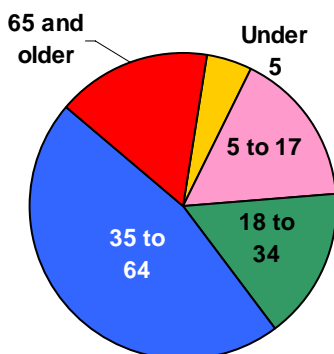
## Colleges and Universities

None

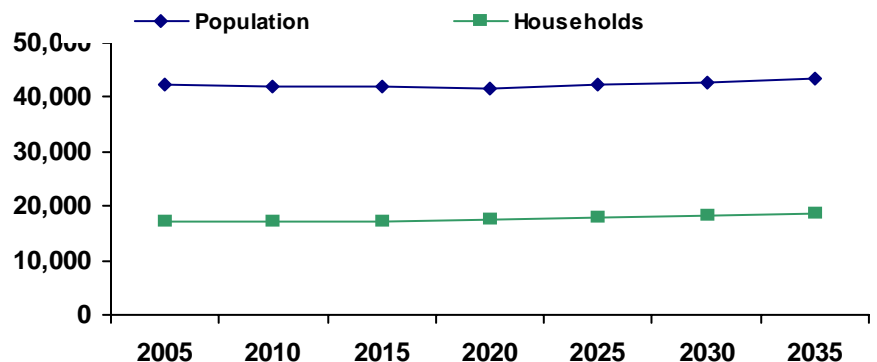
## Educational Attainment of People Over 25 Years of Age



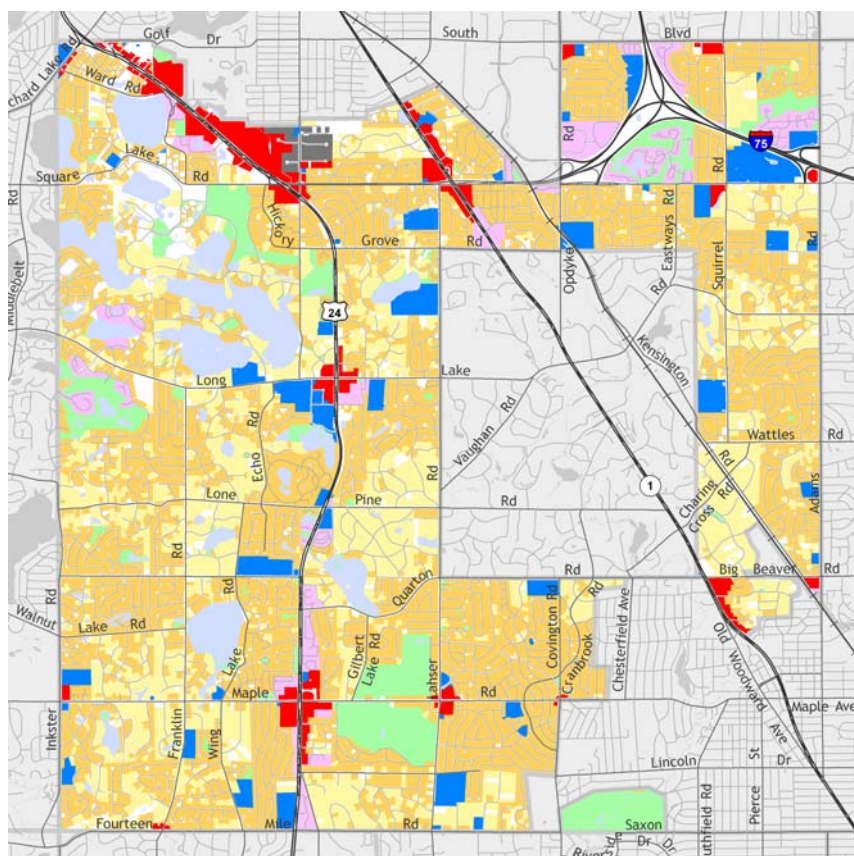
## Population by Age



## Population and Household Growth

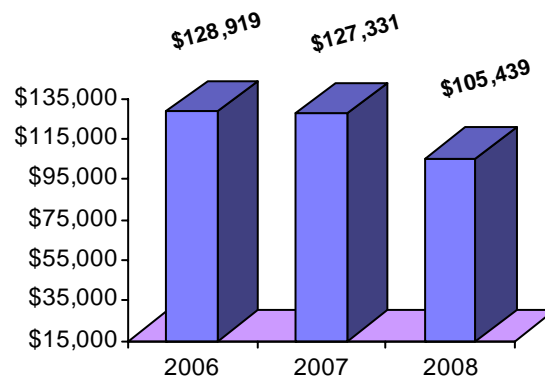


## Bloomfield Township



The information provided has been compiled from recorded deeds, plats, tax maps, surveys, and other public records. It is not a legally recorded map or survey and is not intended to be used as one. For more detailed land use information, go to <http://www.oakgov.com/luz>

## Median Household Income



Source: Claritas

## Housing Sales

<b>2010 # of Sales</b>	197
<b>2010 Median Sales \$</b>	\$232,000
<b>2010 Avg DOM</b>	167
<b>2009 # of Sales</b>	531
<b>2009 Median Sale \$</b>	\$220,000
<b>2009 Avg DOM</b>	155
<b>2008 # of Sales</b>	495
<b>2008 Median Sale \$</b>	\$260,000
<b>2008 Avg DOM</b>	167

Realcomp (2010 through April only)

## Top Employers

Rank	Company Name	Industry
1	Bloomfield Hills School District	Primary and secondary education
2	Bloomfield Charter Township	Government services and library
3	Sheena Management LLC	Food service consultants
4	Birmingham Public Schools	Primary education
5	Heartland Health Care Center	Skilled nursing care facilities
6	Costco	Warehouse club stores
7	BBI Enterprises, L.P.	Motor vehicle parts and accessories
8	US Post Office	US postal services
9	Hubbell Roth & Clark Inc.	Consulting engineer
10	Senior Comforcare Services Inc.	Home health care services
11	Lowe's	Home centers

## Manufactured Housing

Year	# of Parks	# of Units
2005	0	0
2007	0	0
2003	0	0

Source: SEMCOG

