

Addison Township

A community you can LIVE in!

Horse farms, working farms and estates, cornfields, lakefront homes and youth camps comprise the landscape of the Township of Addison. Addison Oaks County Park, Lakeville Lake, Secord Lake and a nature preserve provide extensive recreation opportunities for the rural lifestyle here, where it is common to see groups of horseback riders along the road. A good portion of the 12.2 mile Poly Ann Trail crosses through Addison Township offering a variety of hiking, skiing, and horseback riding opportunities. Upland Hills Farm and School are prominent fixtures of this scenic community. Golfing enthusiasts should not miss the offerings at the Mulbury Hills and Copper Hills Golf and Country Clubs. Private recreational offerings include the Elks Club Lodge and Echo Grove Camp located at the center of the Township. The Rochester Riding Academy and Stable is also located in this horse lover's paradise.

Local Government

Supervisor

Bruce Pearson (248) 628-5409

Planning Commission

Lawrence Smith (248) 628-3317

Clerk

Pauline Bennett (248) 628-5409

www.twp.addison.mi.us/

Private Schools

Kingsbury, Upland Hills

Public School Enrollment

Does not include public school academies

School District	Year	Enrollment
Lake Orion	2008 - 2009	7,853
Oxford	2008 - 2009	4,386

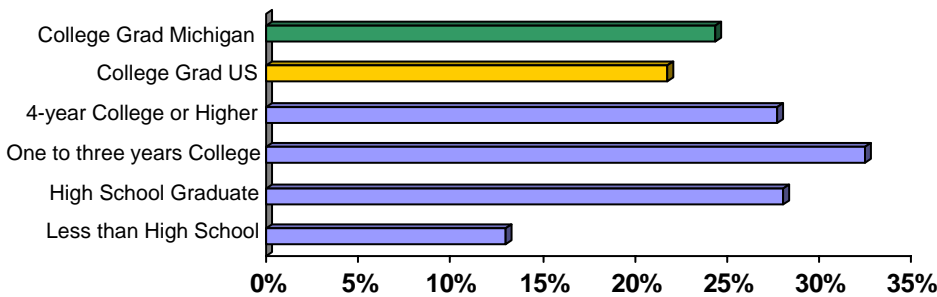
2009 Tax Rates

School District	Homestead	Non Homestead
Almont	\$30.24	\$48.24
Lake Orion	\$31.31	\$49.31
Oxford	\$30.82	\$48.81
Romeo	\$26.86	\$44.86

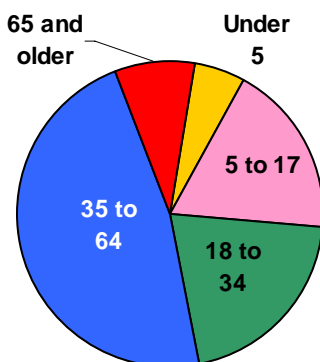
Colleges and Universities

None

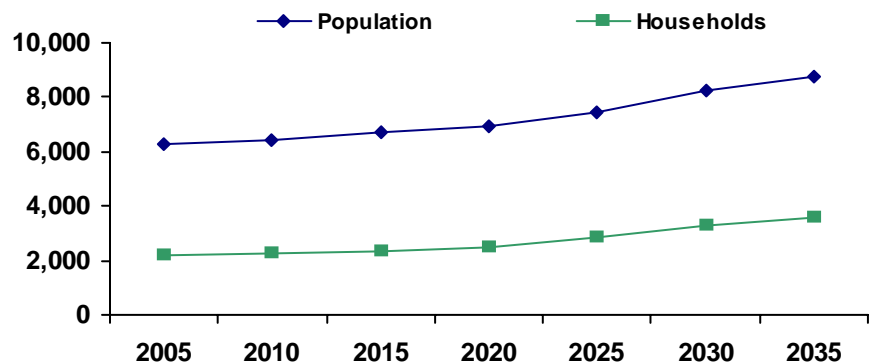
Educational Attainment of People Over 25 Years of Age



Population by Age

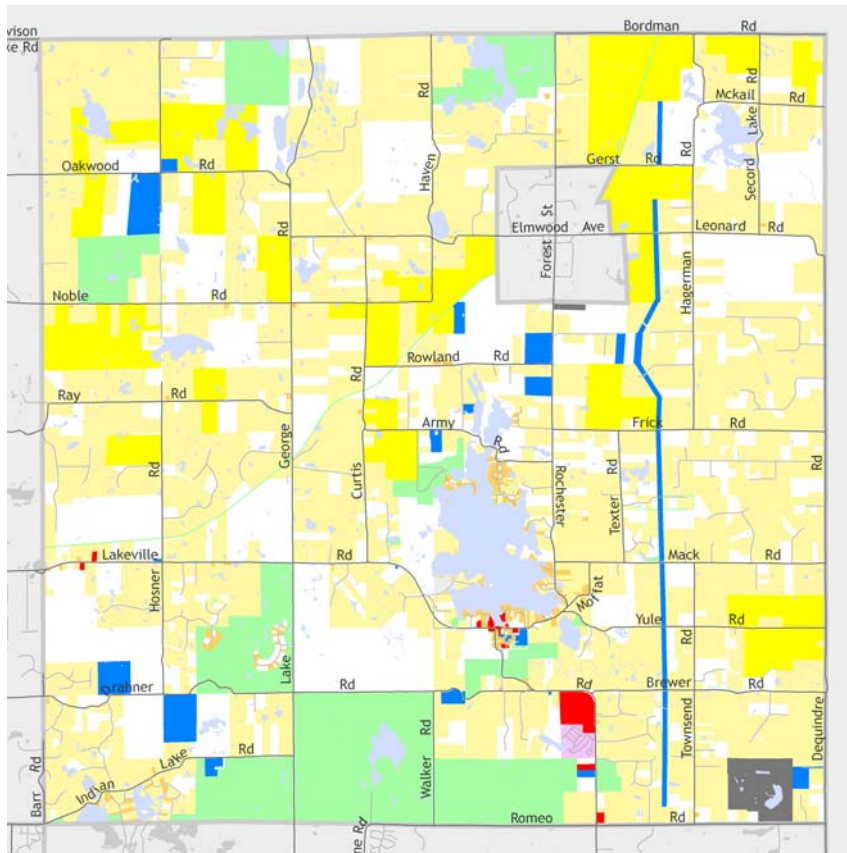


Population and Household Growth

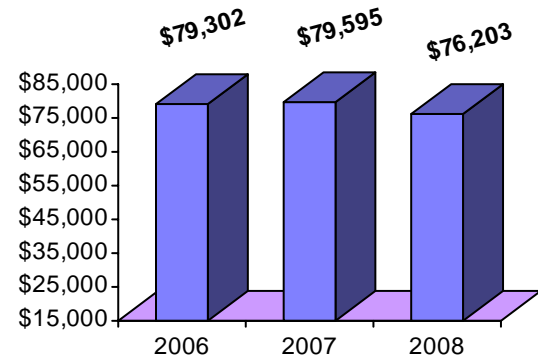


Addison Township

Median Household Income



The information provided has been compiled from recorded deeds, plats, tax maps, surveys, and other public records. It is not a legally recorded map or survey and is not intended to be used as one. For more detailed land use information, go to <http://www.oakgov.com/luz>



Source: Claritas

Housing Sales

2009 # of Sales	58
2009 Median Sales \$	\$180,500
2009 Avg DOM	160
2008 # of Sales	35
2008 Median Sale \$	\$231,000
2008 Avg DOM	138
2007 # of Sales	45
2007 Median Sale \$	\$250,000
2007 Avg DOM	147

Realcomp

Top Employers

Rank	Company Name	Industry
1	Oakland County	Addison Oaks Park and Sheriff
2	Hamilton Parsons Elementary	Primary education
3	North Star Refrigeration Heating & Cooling	Heating and cooling
4	Salvation Army - Echo Grove Camp	Recreational camp
5	3-D Building Inc.	Residential construction
6	Friends & Family Inc	Residential care
7	Elks Lodge No 2716	Civic and social association
8	Tritech Industries	Sheet metalwork
9	Mastercraft & Associates	Building maintenance services
10	Boyd A1 Painting	Painting and paper hanging
11	Progressive Residential Services	Residential care facilities

Manufactured Housing

Year	# of Parks	# of Units
2005	1	269
2007	1	269
2003	1	269

Source: SEMCOG

