

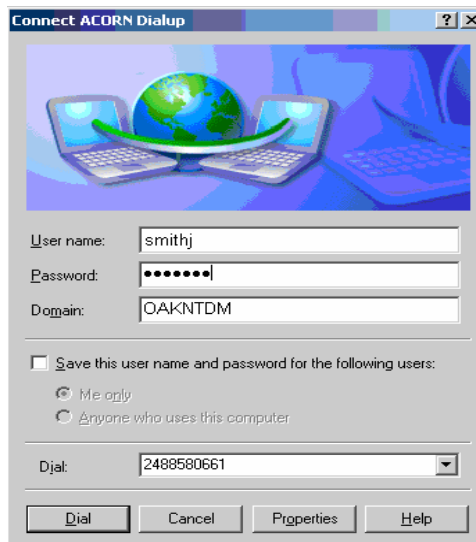
# Laptop Dialup - Receiving Your SecurID PIN Number

## Dialing In (First Time Use Only)

Before dialing in, you will need your:

- SecurID Card & PIN#
- County Network Login and Password
- 3Com Megahertz 56K Cellular Modem PC Card (Versa LX Model)
- Connector Cable (black cord with the imprint of the telephone icon) (Versa LX Model)
- Telephone Cord (Versa LXI Model)
- Telephone Cord (XP Users)

1. From the **Login Screen**, press the **Ctrl + Alt + Delete** keys simultaneously to access the **Microsoft Logon** window.
2. Click the **OK** button to acknowledge the **Oakland County Warning Banner**.
3. From the **Logon** screen, type **your last name** and **first initial** in the **User name** field. (e.g. smithj is the user name for John Smith.)
4. Type your **network password** in the **Password** field.
5. Check the box that says **Log on Using Dial-up Connection**. (If you only wish to use desktop applications and **not** log into the network, do not check the box. You will see the desktop appear, and you can begin using the desktop applications.)
6. Click the **OK** button.
7. From the **Network Connection** dialog box, click the **Connect** button.
8. From the **Connect ACORN Dialup** dialog box, type **your network password** in the **Password** field. This information may populate automatically.
9. Click the **Dial** button. If prompted to **make the phone number change permanent**, click the **No** button. The modem will begin dialing.



# Laptop Dialup - Receiving Your SecurID PIN Number

## SecurID Authentication Screen

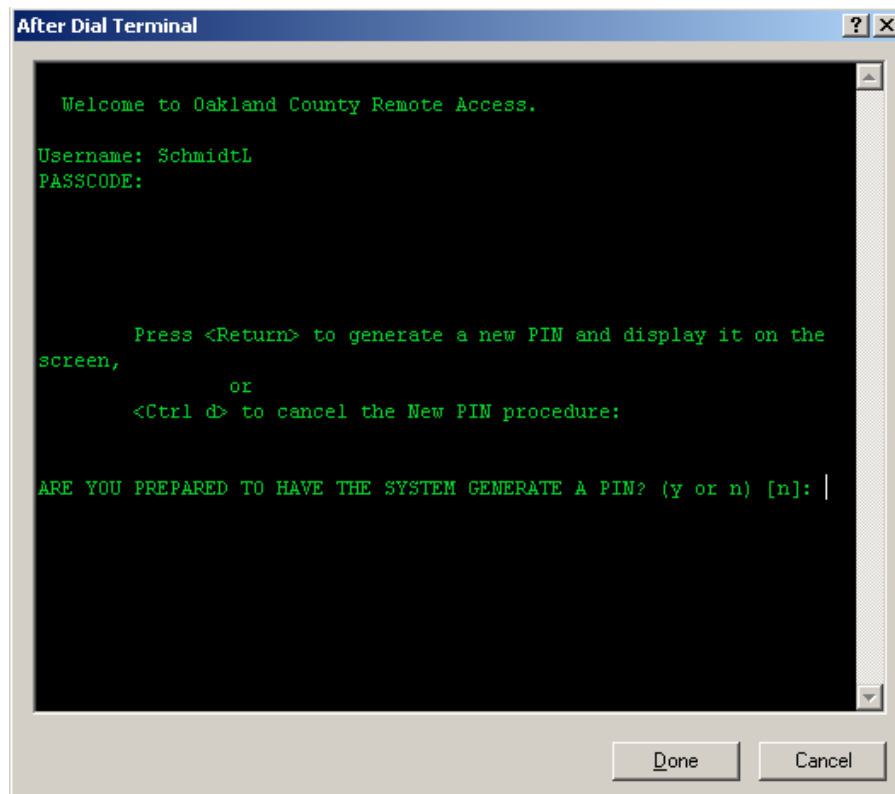
Once the connection is made, you will be prompted to log into the dial-up server using your PIN # and the Passcode (provided on the SecurID Card) issued by Information Technology.

**NOTE:** For security purposes the Passcode on the SecurID Card changes every 60 seconds. You should never share your PIN # or SecurID Card with anyone.

1. At the **Username** prompt, type in your **last name, first initial**. This information may populate automatically.
2. Press the **Enter** key.
3. Using one of the SecurID cards shown below, at the **PASSCODE** prompt, type the **6-digit code** displayed on your SecurID Card. Nothing will be displayed on the screen.



4. Press the **Enter** key.
5. At the **Press <Return> to generate a new PIN and display it on the screen, or <Ctrl d> to cancel the New PIN procedure** prompt, press the **ENTER** key.
6. At the **ARE YOU PREPARED TO HAVE THE SYSTEM GENERATE A PIN? (y or n) [n]:** prompt, type **y**.



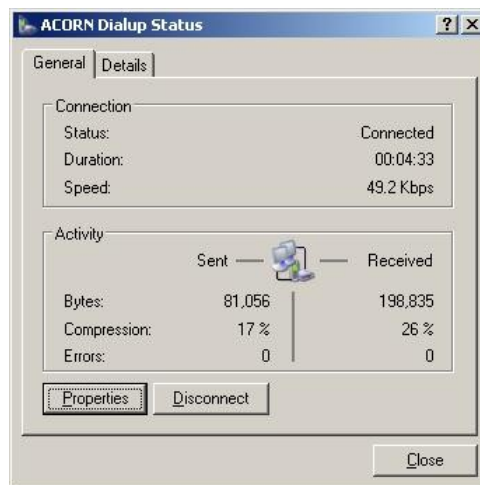
# Laptop Dialup - Receiving Your SecurID PIN Number

7. Press the **ENTER** key. The system will display your PIN number. You will need to remember this number.
8. Press the **ENTER** key to clear the screen.
9. At the **PASSCODE** prompt, type your **4-digit PIN number** followed by the **6-digit code** displayed on your SecurID card. Nothing will be displayed on the screen.
10. Press the **ENTER** key.
11. The black **After Dial Terminal** screen will close and the **Logging on to Windows** screen will appear.

## Disconnecting from Dial-Up

When you are finished using the dial-up, you must break the connection.

1. From the **Desktop**, double click the **ACORN Dialup** icon.
2. Click the **Disconnect** button.



You are now completely disconnected from the Oakland County Dial-up server.

For further information on laptop dialup instructions, please review the **Dialup & Remote Network Connection** documentation found on the IT Training Center web site, specifically [http://www.oakgov.com/ittrain/assets/docs/laptop\\_dialup\\_remote.pdf](http://www.oakgov.com/ittrain/assets/docs/laptop_dialup_remote.pdf)

If you have any problems, please call the IT Service Center at (248) 858-8812.