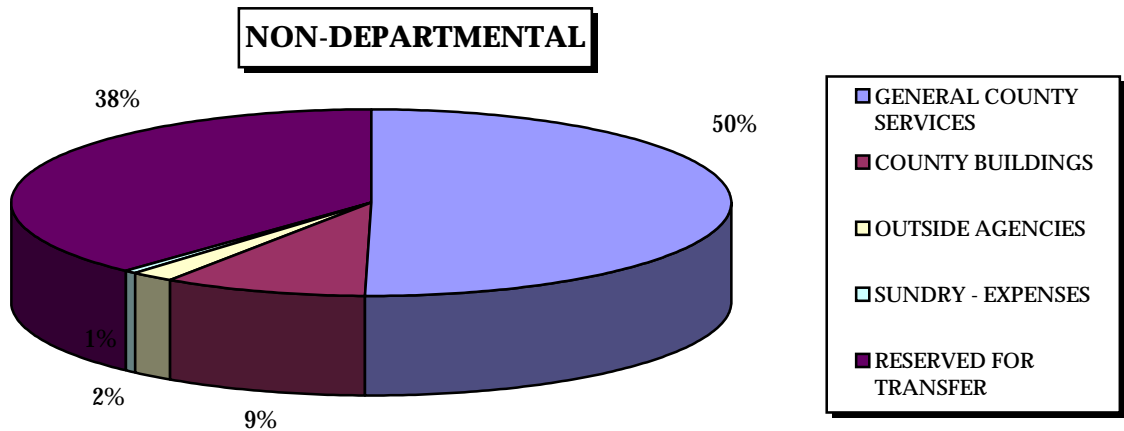
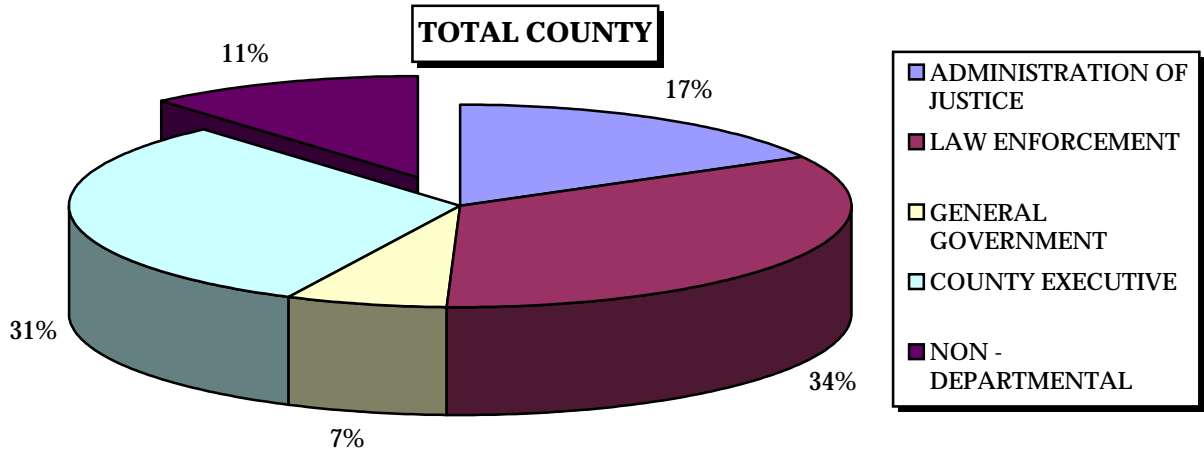


## GENERAL FUND/GENERAL PURPOSE BUDGET NON - DEPARTMENTAL EXPENDITURES



# Non-Departmental

## Revenue Budget by Category (GF/GP)

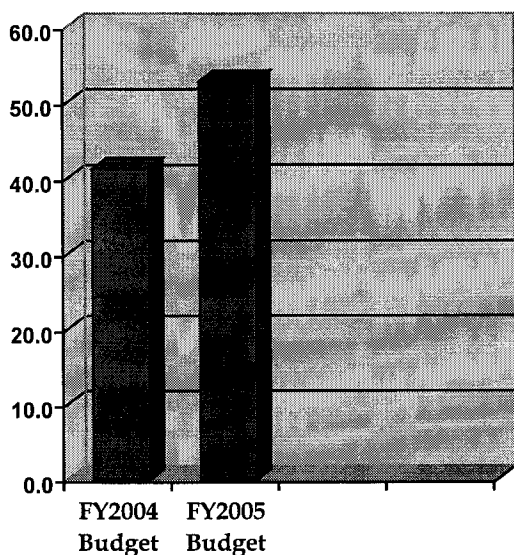
	FY2004 Budget	FY2005 Budget
Taxes	214,064,000	223,981,000
State Grants	9,715,000	9,715,000
Intergovernmental	28,922,827	28,922,827
Charges for Services	9,042,054	9,042,054
Investment Income	6,000,000	6,250,000
Other Revenues	3,503,694	4,570,828
Transfers In *	3,580,000	3,580,000
<b>Total Revenue</b>	<b>\$274,827,575</b>	<b>\$286,061,709</b>

\* Excludes transfers to support General Purpose funds.

## Expenditure Budget by Category (GF/GP)

	FY2004 Budget	FY2005 Budget
General County Oper.	20,767,866	21,778,044
County Buildings	3,814,029	3,501,299
Outside Agencies	751,500	751,500
Sundry	300,000	300,000
Reserved for Transfer	15,719,843	26,462,210
<b>Total Expenditures</b>	<b>\$41,353,238</b>	<b>\$52,793,053</b>

## Non-Departmental Expenditures (\$ in millions)



## Summary

The Non-Departmental section includes general fund revenues and expenditures related to external agencies, component units, reserves for transfers and operating transfers to other County funds. Also included are expenditures for vacant space within County facilities and the maintenance of County grounds.

## Summary of Major Program Changes

### Revenue

The FY 2004 budget was reduced to recognize updated projections for current programs and the end of the five-year Environmental Infrastructure program. Revenue budgets were reduced for State Revenue Sharing, Commission on Pay phones and increased due to property taxes as a result of increased property values.

### Expenditures

The FY 2004 budget reflects reduced programs for Summer Help, Office Automation, and Capital Improvement.

## Other County Operations

- **State Institutions:** Cost of care for juveniles, convicted of crimes in Circuit Court, however sentenced to state juvenile facilities.
- **Ambulance:** Appropriation for the transportation of emergency highway accident victims and Oakland County Hospital patients. PA 176 of 1937 places the responsibility on the County for paying the cost of transporting indigent persons who are injured on the highways of this state.
- **Insurance and Surety Bonds:** Appropriation for Employee Bonding and a portion of premiums for Property Damage, Boiler and Machinery, Building and Contents, and Employee Blanket policies.
- **Information Technology - CLEMIS:** Appropriation covers the County's contribution to the daily operations of the Court and Law Enforcement Management Information System.
- **Road Commission - Tri Party Agreement:** Annual appropriation to the Road Commission of Oakland County for County road improvement programs, under the Tri-Party Agreement. The program began in 1980, pursuant to Misc. Resolution #9246.

## Non-Departmental

### Revenue History by Category (GF/GP)

	FY2002 <u>Actual</u>	FY2003 <u>Est. Actual</u>
Taxes	191,672,122	203,949,451
State Grants	9,729,469	9,149,064
Intergovernmental	36,938,591	34,769,251
Charges for Services	10,257,619	10,817,869
Investment Income	5,215,116	3,873,891
Other Revenues	1,487,766	1,439,955
Transfers In *	<u>10,029,000</u>	<u>7,101,832</u>
Total Revenue	\$265,329,683	\$271,101,313

\* Excludes transfers to support General Purpose funds.

### Expenditure History by Category (GF/GP)

	FY2002 <u>Actual</u>	FY2003 <u>Est. Actual</u>
General County Oper.	44,218,328	32,573,148
County Buildings	2,408,033	2,109,528
Outside Agencies	887,372	601,309
Sundry	875,974	648,744
Reserve for Transfer	280	149,690
Total Expenditures	<u>\$48,389,987</u>	<u>\$36,082,419</u>

### Other County Operations, Cont.

- **Road Commission - Current Drain Assessment:** Appropriation to cover the County's portion of drain assessments from Road Commission projects.
- **Community Mental Health Authority - Annual payment to the Oakland County Community Mental Health Authority, as required by the Mental Health Code.**
- **OakNet - Appropriation to cover the annual operating and debt service cost of the Metropolitan Area Network/ Wide Area Network computer system connecting the County with the local police departments as well as other offices in the cities, villages and townships.**

### State and Federal (Outside Agencies)

- **Southeast Michigan Council of Governments (SEMCOG):** An organization of local governments in the Southeastern Michigan Metropolitan Area. Its purpose is to promote cooperation between units of government and facilities solving problems of mutual interest. The Council is responsible for comprehensive, multipurpose regional planning, pursuant to the Regional Planning Commission Act. Membership dues based on County S.E.V., which is capped so that no county pays more than 25% of the total organization dues.
- **Area Wide Water Quality Board:** Oakland County's payment for designated management agency service charge based on County's annual sewage flow.
- **National Association of Counties (NACo):** Annual membership dues.
- **Michigan Association of Counties (MAC):** Annual membership dues.
- **Traffic Improvement Association:** Appropriation to fund a professional services contract with the organization.
- **Senior Citizen Prescriptions:** Enrollment charges related to the county prescription program.
- **West Nile Virus:** Appropriation established to assist cities, villages and townships with mosquito control measures to prevent the spread of the West Nile Virus and to help protect the health and safety and welfare of the people of Oakland County.

### County Buildings

- Where possible, cost to maintain County buildings is budgeted in each division under the line-item "Building Space Cost Allocation". Costs for maintenance of some areas, and vacant space, as well as work as needed in the ensuing year for maintenance & special projects are budgeted here.

### Sundry

- **Miscellaneous:** Appropriation provides funds for adjustments of prior years' expenditures, Local Tax refunds, and miscellaneous non-recurring items.

### Reserved for Transfer

---

- **Contingency:** Appropriation used to fund program changes throughout the year as authorized by the Board of Commissioners.
- **Legislative Expense:** Funding reflects anticipated increase in support staff for the Board of Commissioners. Transfer of these funds will occur after the creation of the appropriate positions through a Board resolution.
- **Information Technology - Development:** Appropriation to be used to support software development efforts conducted by Information Technology for the County's General Fund/General Purpose operations. Allocations are made once a fiscal quarter pursuant to a resolution adopted by the Board of Commissioners.
- **Salary Adjustment:** The FY 2005 funding is to cover the governmental fund portion of a possible 3.0% increase effective October 1, 2004.
- **Classification and Rate Changes:** Funds for classification and rate changes as authorized by the Board of Commissioners throughout the year.
- **Overtime:** Funds for transfer to divisions when overtime is approved by the Director of Management & Budget, in accordance with the Overtime Regulations.
- **Summer Employment:** Appropriation for Governmental Funds to be transferred to Departments/Divisions at the start of the summer program.
- **Emergency Salaries:** Funds for transfer to divisions in anticipation of unusual workloads, and staffing problems including the Medical Care Facility, Children's Village, and other twenty-four (24) hour, seven (7) day a week operations where children, patients or inmates require constant attention, as well as other county departments.
- **Fringe Benefit Adjustment:** Cost to cover payroll driven fringe benefits related to the Salary Adjustment account.
- **Capital Outlay:** This program provides for the purchase of files, furniture and other equipment, not anticipated in Departmental Budgets.
- **Office Automation:** Reserve for transfer to provide for purchase of office automation hardware and software, subject to approval of the Board.
- **Administrative Leave:** Budget for the estimated savings for General Fund/General Purpose employees for authorized leave without pay per M.R.#03043.

### Operating Transfers

---

- **Transfer to Environmental Infrastructure Fund:** Annual appropriations of \$5 million were made to establish an Environmental Infrastructure Fund totaling \$25 million. The final year of the five (5) year program was FY 2003.
- **Transfer to Building Fund:** This appropriation is reserved for transfer to the Capital Improvement Program for the development and maintenance of county buildings.
- **Transfer to Building Authority:** This appropriation covers debt service for the Computer Services Building and Court House West Wing Expansion, owed to the Building Authority.
- **Transfer to Oakland Community Partnerships:** This appropriation covers the County's portion of public / private partnerships designed to enhance economic development within the County.
- **Transfers to General Purpose Funds (Health, Juvenile Maintenance, and Social Welfare):** The General Fund provides an allocation to make up the difference between what revenue is received by the General Purpose funds (listed above), and the expenditures made from these funds. Unlike grants and proprietary funds, there is no expectation that revenue generated by these activities will cover all expenditures. Rather, these funds are extensions of the General Fund, separated by law for reporting purposes.

*The Palace of Auburn Hills is home to the NBA's Detroit Pistons. Other professional sports teams playing at the Palace include the Detroit Shock of the WNBA and the Detroit Fury of the Arena Football League.*