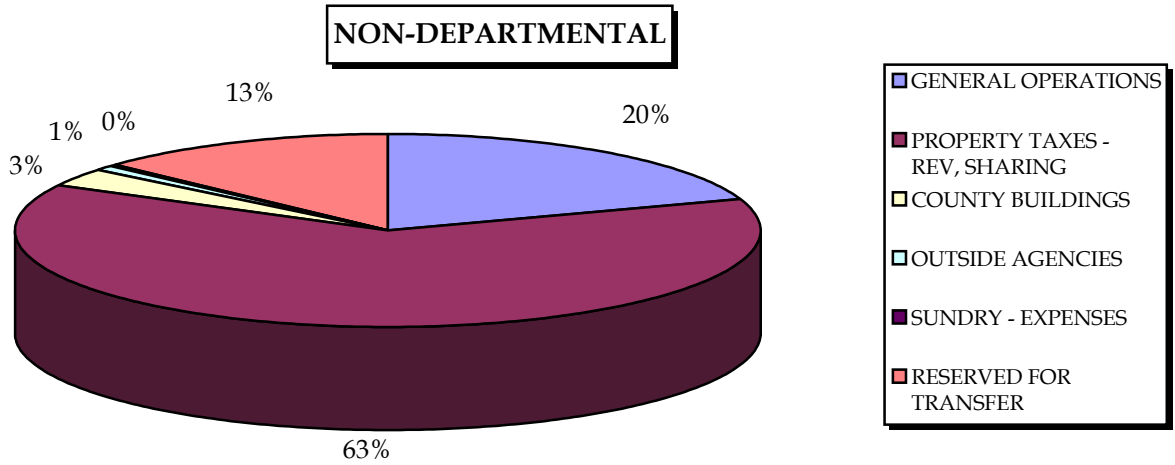
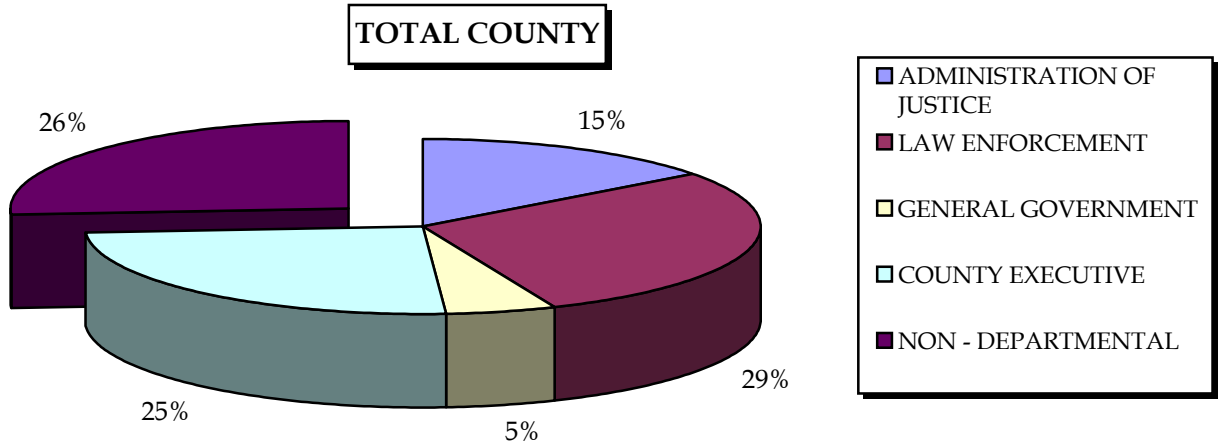


GENERAL FUND/GENERAL PURPOSE BUDGET NON - DEPARTMENTAL EXPENDITURES



Non-Departmental

Revenue Budget by Category (GF/GP)

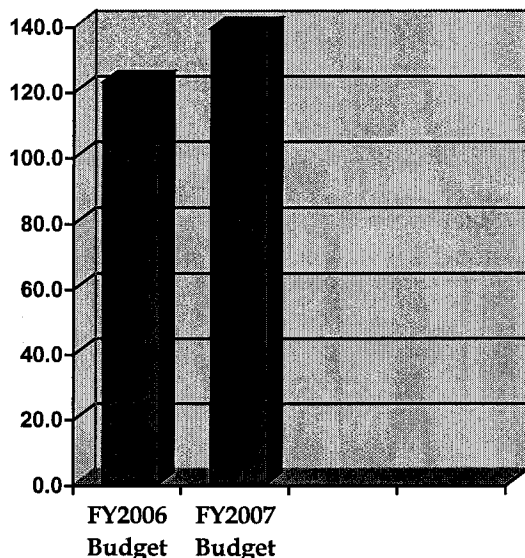
	FY2006 Budget	FY2007 Budget
Taxes	314,648,160	328,258,628
State Grants	9,700,000	9,200,000
Intergovernmental	11,147,210	11,147,210
Charges for Services	10,400,000	10,417,500
Investment Income	2,000,000	2,859,500
Other Revenues	681,515	0
Transfers In *	25,643,000	26,304,700
Total Revenue	\$374,218,885	\$388,187,538

* Excludes transfers to support General Purpose funds.

Expenditure Budget by Category (GF/GP)

	FY2006 Budget	FY2007 Budget
General County Oper.	101,474,476	106,227,799
County Buildings	3,800,335	4,524,070
Outside Agencies	759,400	760,400
Sundry	300,000	300,000
Reserved for Transfer	16,139,450	27,137,778
Total Expenditures	\$122,473,661	\$138,950,047

Non-Departmental Expenditures (\$ in millions)



Summary

The Non-Departmental section includes general fund revenues and expenditures related to external agencies, component units, reserves for transfers and operating transfers to other County funds. Also included are expenditures for vacant space within County facilities and the maintenance of County grounds.

Summary of Major Program Changes

Revenue

With the State of Michigan's discontinuance of revenue sharing, the FY 2006 budget includes a provision to account for the accelerated collection of property taxes. Transfers In includes \$25.6 million from the Revenue Sharing Reserve fund, to be used in lieu of State revenue sharing.

Expenditures

Includes transfers to newly established Revenue Sharing Reserve and Capital Cooperative Initiatives Revolving funds, \$77.1 and \$7.8 million, respectively.

Other County Operations

- **Ambulance:** Appropriation for the transportation of emergency highway accident victims and Oakland County Hospital patients. PA 176 of 1937 places the responsibility on the County for paying the cost of transporting indigent persons who are injured on the highways of this state.
- **Insurance and Surety Bonds:** Appropriation for Employee Bonding and a portion of premiums for Property Damage, Boiler and Machinery, Building and Contents, and Employee Blanket policies.
- **Information Technology - CLEMIS:** Appropriation covers the County's contribution to the daily operations of the Court and Law Enforcement Management Information System.
- **Road Commission - Tri Party Agreement:** Annual appropriation to the Road Commission of Oakland County for County road improvement programs, under the Tri-Party Agreement. The program began in 1980, pursuant to Misc. Resolution #9246. Revised by MR#04370.

Non-Departmental

Revenue History by Category (GF/GP)

	FY2004 <u>Actual</u>	FY2005 <u>Amended</u>
Taxes	214,235,168	225,410,000
State Grants	10,427,633	9,715,000
Intergovernmental	32,264,770	32,693,400
Charges for Services	11,015,424	10,914,000
Investment Income	1,541,857	1,400,000
Other Revenues	609,603	15,650,291
Transfers In *	<u>4,069,023</u>	<u>3,600,000</u>
Total Revenue	\$274,163,478	\$299,382,691

* Excludes transfers to support General Purpose funds.

Expenditure History by Category (GF/GP)

	FY2004 <u>Actual</u>	FY2005 <u>Amended</u>
General County Oper.	83,050,842	32,672,155
County Buildings	3,120,984	3,582,763
Outside Agencies	701,609	751,500
Sundry	1,007,554	300,147
Reserve for Transfer	0	7,904,658
Total Expenditures	<u>\$87,880,988</u>	<u>\$45,211,223</u>

Other County Operations, Cont.

- **Road Commission - Current Drain Assessment:** Appropriation to cover the County's portion of drain assessments from Road Commission projects.
- **Community Mental Health Authority - Annual payment to the Oakland County Community Mental Health Authority, as required by the Mental Health Code.**
- **OakNet - Appropriation to cover the annual operating and debt service cost of the Metropolitan Area Network/ Wide Area Network computer system connecting the County with the local police departments as well as other offices in the cities, villages and townships.**

State and Federal (Outside Agencies)

- **Southeast Michigan Council of Governments (SEMCOG):** An organization of local governments in the Southeastern Michigan Metropolitan Area. Its purpose is to promote cooperation between units of government and facilities solving problems of mutual interest. The Council is responsible for comprehensive, multipurpose regional planning, pursuant to the Regional Planning Commission Act. Membership dues based on County S.E.V., which is capped so that no county pays more than 25% of the total organization dues.
- **Area Wide Water Quality Board:** Oakland County's payment for designated management agency service charge based on County's annual sewage flow.
- **National Association of Counties (NACo):** Annual membership dues.
- **Michigan Association of Counties (MAC):** Annual membership dues.
- **Traffic Improvement Association:** Appropriation to fund a professional services contract with the organization.
- **Senior Citizen Prescriptions:** Enrollment charges related to the county prescription program.
- **West Nile Virus:** Appropriation established to assist cities, villages and townships with mosquito control measures to prevent the spread of the West Nile Virus and to help protect the health and safety and welfare of the people of Oakland County.

County Buildings

- Where possible, cost to maintain County buildings is budgeted in each division under the line-item "Building Space Cost Allocation". Costs for maintenance of some areas, and vacant space, as well as work as needed in the ensuing year for maintenance & special projects are budgeted here.

Sundry

- **Miscellaneous:** Appropriation provides funds for adjustments of prior years' expenditures, Local Tax refunds, and miscellaneous non-recurring items.

Reserved for Transfer

- **Contingency:** Appropriation used to fund program changes throughout the year as authorized by the Board of Commissioners.
- **Legislative Expense:** Funding reflects anticipated increase in support staff for the Board of Commissioners. Transfer of these funds will occur after the creation of the appropriate positions through a Board resolution.
- **Information Technology - Development:** Appropriation to be used to support software development efforts conducted by Information Technology for the County's General Fund/General Purpose operations. Allocations are made once a fiscal quarter pursuant to a resolution adopted by the Board of Commissioners.
- **Salary Adjustment:** The FY 2007 funding is to cover the governmental fund portion of a possible 2.0% increase effective October 1, 2007.
- **Classification and Rate Changes:** Funds for classification and rate changes as authorized by the Board of Commissioners throughout the year.
- **Overtime:** Funds for transfer to divisions when overtime is approved by the Director of Management & Budget, in accordance with the Overtime Regulations.
- **Summer Employment:** Appropriation for Governmental Funds to be transferred to Departments/Divisions at the start of the summer program.
- **Emergency Salaries:** Funds for transfer to divisions in anticipation of unusual workloads, and staffing problems including, Children's Village, and other twenty-four (24) hour, seven (7) day a week operations where children or inmates require constant attention, as well as other county departments.
- **Fringe Benefit Adjustment:** Cost to cover payroll driven fringe benefits related to the Salary Adjustment account.
- **Grant Match:** Funds available for transfer to departments upon acceptance of grants per resolution.
- **Capital Outlay:** This program provides for the purchase of files, furniture and other equipment, not anticipated in Departmental Budgets.
- **Administrative Leave:** Budget for the estimated savings for General Fund/General Purpose employees for authorized leave without pay per M.R.#03043.

Transfers Out

- **Transfer to Building Fund:** This appropriation is reserved for transfer to the Capital Improvement Program for the development and maintenance of county buildings.
- **Transfer to Building Authority:** This appropriation covers debt service for the Computer Services Building and Courthouse West Wing Expansion.
- **Transfer to Oakland Community Partnerships:** This appropriation covers the County's portion of public / private partnerships designed to enhance economic development within the County.
- **Transfers to General Purpose Funds (Health, Juvenile Maintenance, and Social Welfare):** The General Fund provides an allocation to make up the difference between what revenue is received by the General Purpose funds (listed above), and the expenditures made from these funds. Unlike grants and proprietary funds, there is no expectation that revenue generated by these activities will cover all expenditures. Rather, these funds are extensions of the General Fund, separated by law for reporting purposes.
- **Transfer to Revenue Sharing Reserve:** Per Public Act 357 of 2004, the amount of the transfer reflects one-third of the County's millage, which is levied in July 2006 and 2007. The County is authorized to make an annual withdrawal of an amount equal to the FY2004 State revenue sharing payment, until the Revenue Sharing Fund is depleted (estimated 2015).

Retail sales in Oakland County during 2002 totaled \$22.5 billion. This exceeded the total retail sales of fourteen different states and the District of Columbia.