

Help Stop Illegal Fire Hydrant Use



In order to protect your drinking water, reduce water quality complaints and ensure use for fire protection, only Fire, Police, local Department of Public Works and the Oakland County Drain Commissioner's (OCDC) personnel are allowed use of the fire hydrant. All other use of fire hydrants is illegal by local ordinance and enforced by local law enforcement agencies.

Hydrants that are used illegally may be damaged or may freeze causing the fire hydrant to be inoperable during an emergency. The water theft and the cost of the fire hydrant repairs will be charged to the water system, thus, potentially increasing water rates to all customers.

Please contact your local Fire Department, Police Department or OCDC at 248-624-6366 and provide any available information (vehicle information, license plate number and/or company name) if you witness illegal fire hydrant use or any questionable water use.

Don't Obstruct Manhole Covers or Curb Stop Lids!

Manhole Covers



This 24-inch round manhole cover serves an important purpose. If one is located in your yard, don't cover it with landscaping materials

or mulch. Maintenance personnel need to access the cover in order to perform a variety of jobs related to your sewer or water distribution system. Covering the manhole cover could mean increased costs and even impede emergency situations.

Curb Stop Lids

This photo shows a four-inch round lid that covers a valve called a curb stop because it typically is found near the curb line, and, when closed, stops the flow of water into your home.

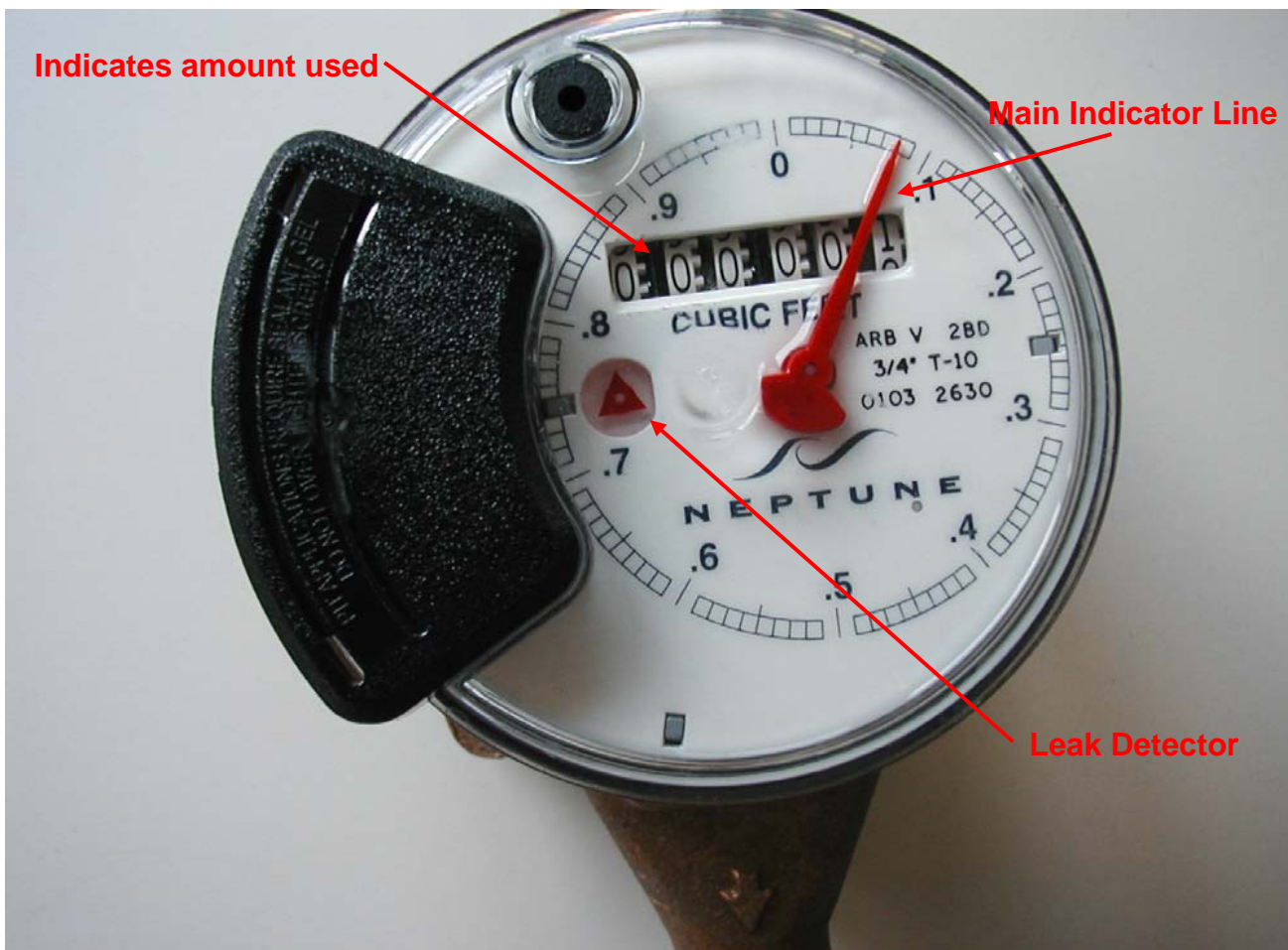


The valve is buried below the ground to protect it from freezing. This valve serves an important purpose. It is the main shut off to your water supply for repair or during an emergency situation. Please make sure this lid is free of debris, mulch or other landscaping materials. Damaging or burying this lid could mean higher costs for you because it's harder to locate, dig up and repair.

Learning to read your water meter. As easy as 1-2-3!



One Public Works Drive
Building 95 West
Waterford, MI 48328-1907
248.858.0958
www.co.oakland.mi.us/drain



Learn to Read Your Water Meter

Learning to read your water meter is easy. The first four digits on the water meter indicate how many hundred cubic feet are used. We use these numbers to calculate your water bill. That's all there is to it. The other dials and indicators perform other functions as explained before, but for reading your meter, all you have to do is check the numbers.

A Message from the Commissioner

Periodically, you will receive inserts, like this one, with your water bill. It is part of our effort to improve service and answer some of the questions you may have about our operation.

That's why we enjoy hearing from you. Your questions and comments are important to us because it helps us do a better job for you, our valued customers.

Our goal is to be the best so we can do the best — for you.



Sincerely,


John P. McCulloch

Here's How You Can Tell if You Have a Leak

Water meters usually are found in basements and most look similar to the picture above. The first four digits from the left on the water meter are used to calculate your water bill. These numbers represent the amount of water (in hundred cubic feet) used. You can check for leaks by first turning off all the water at sinks, bathtubs, garden hoses, and any other source. Next, examine the **Leak Detector**. If the Leak Detector is moving while all water in your house is turned off, you may have a leak. But, some leaks are slow and difficult to detect. Here's a tip. At night, turn off all the water. Make a note of all the digits on the water meter and check the position of the **Main Indicator Line**. If no water was run at night, there should be no movement in the digits or the main indicator line. Remember, however, that some residential humidifiers use a small amount of water and may impact the reading. If your water meter is different than the one shown above, please contact our office at (248)356-6299 for information on how to read your type of meter.