

CAG Login Instructions
Citrix Application Login Procedures
Updated: 03/25/2008

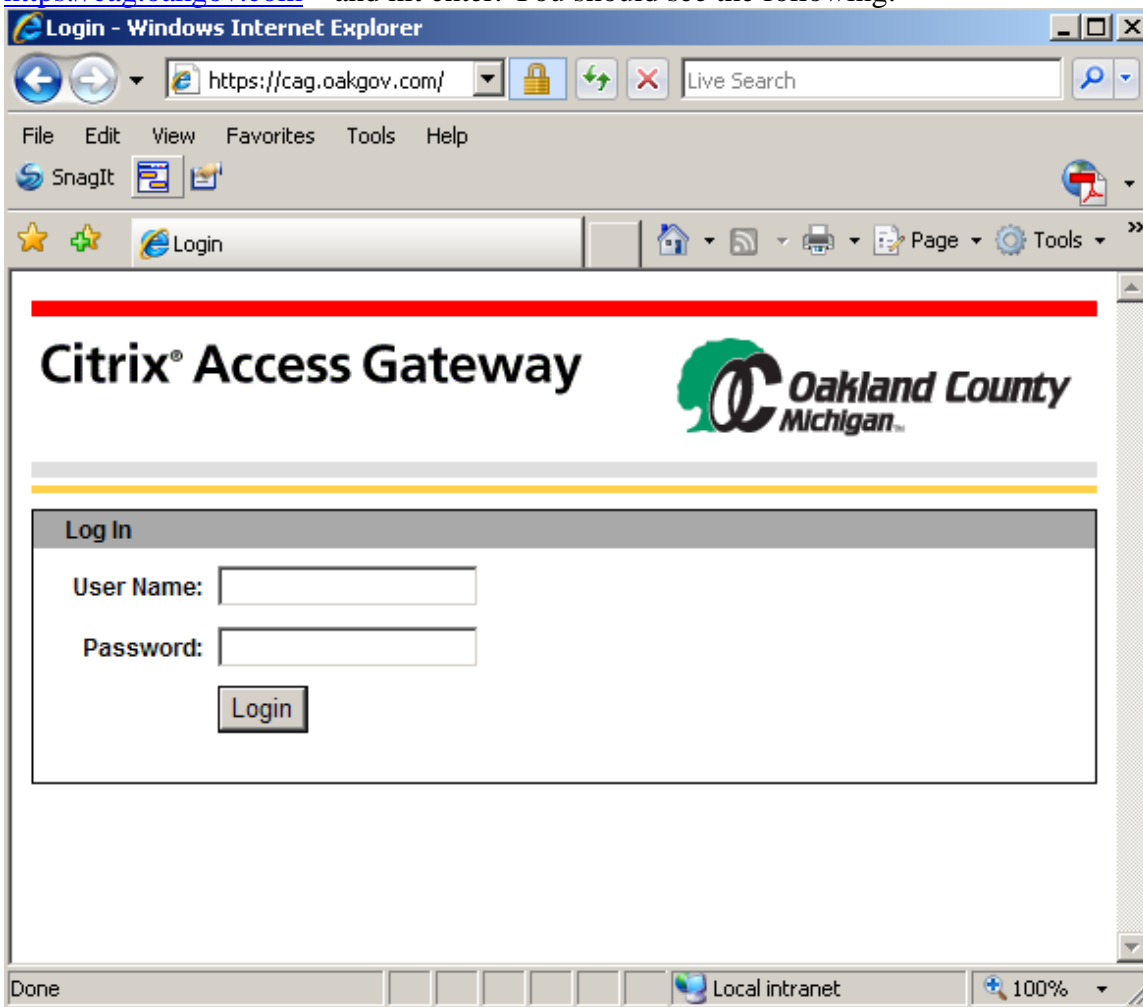
Overview

Citrix Access Gateway (CAG) is the technology Oakland County uses to allow selected customers of the Assessing and Tax applications to gain access from the Internet. The customer will have already established a working account in which is authorized to authenticate to the Oakland County network.

It is a requirement to use the Citrix Presentation Server Client 10.X or higher.

The following instructions are a quick startup for Windows users.

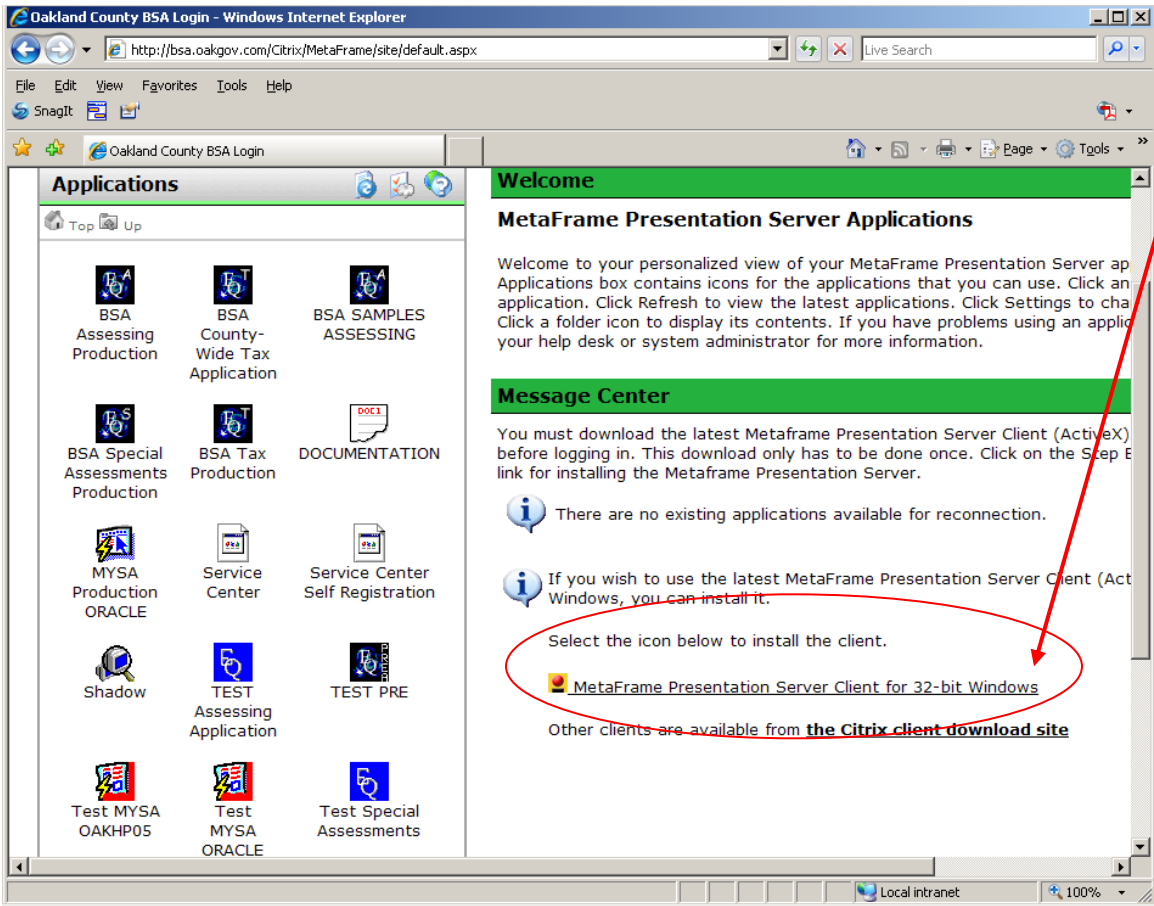
To start a Citrix session, open Internet Explorer. In the URL window type: <https://cag.oakgov.com> and hit enter. You should see the following:



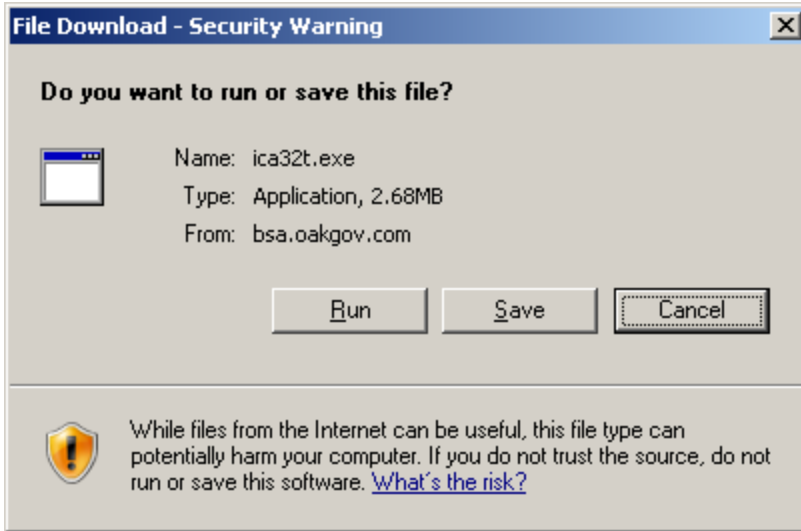
Use this hyperlink to download and install the Citrix Web Client.

Please click the yellow bar to install the client.

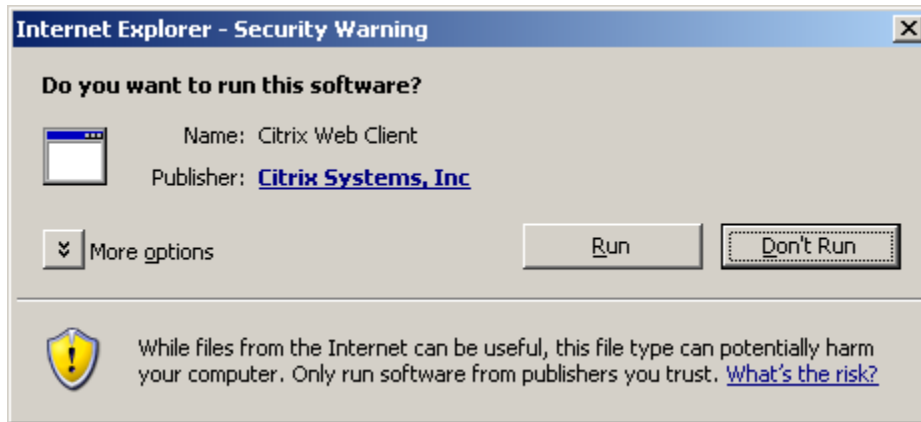
Please enter the correct credentials for User Name and Password and press Login.



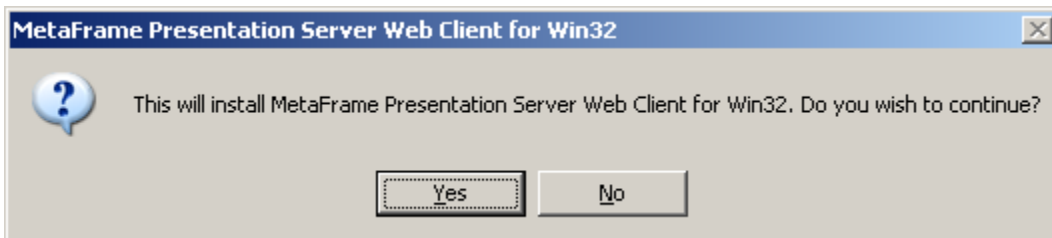
Click on Metaframe Presentation Server Client for 32-bit Windows to start install.



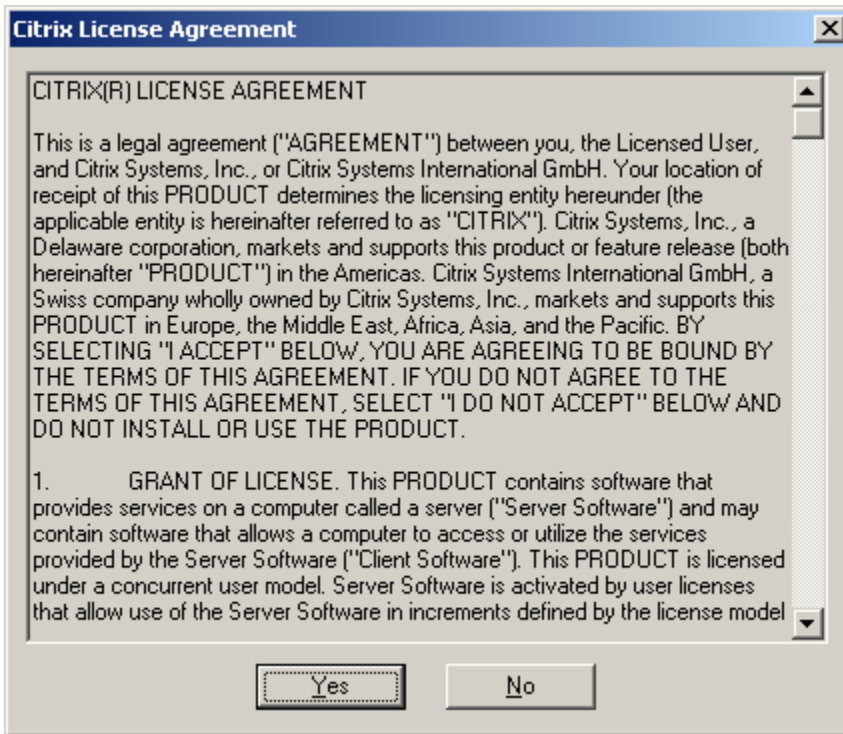
Select Run



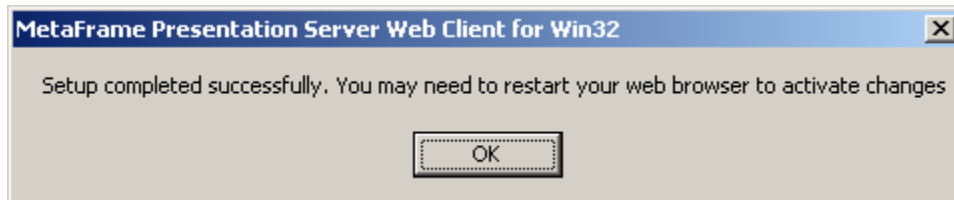
Select Run



Select Yes



Select Yes



Select OK (Notice you must restart your web browser ex. Windows Explorer or Firefox)