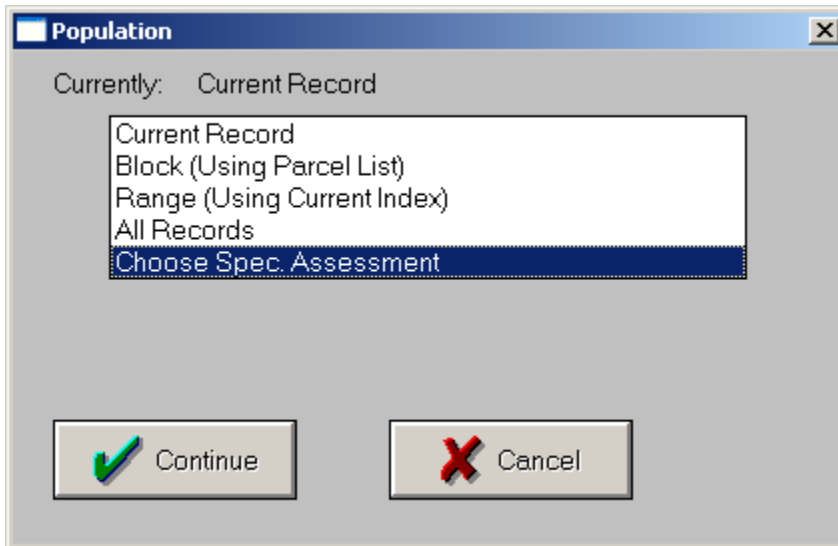
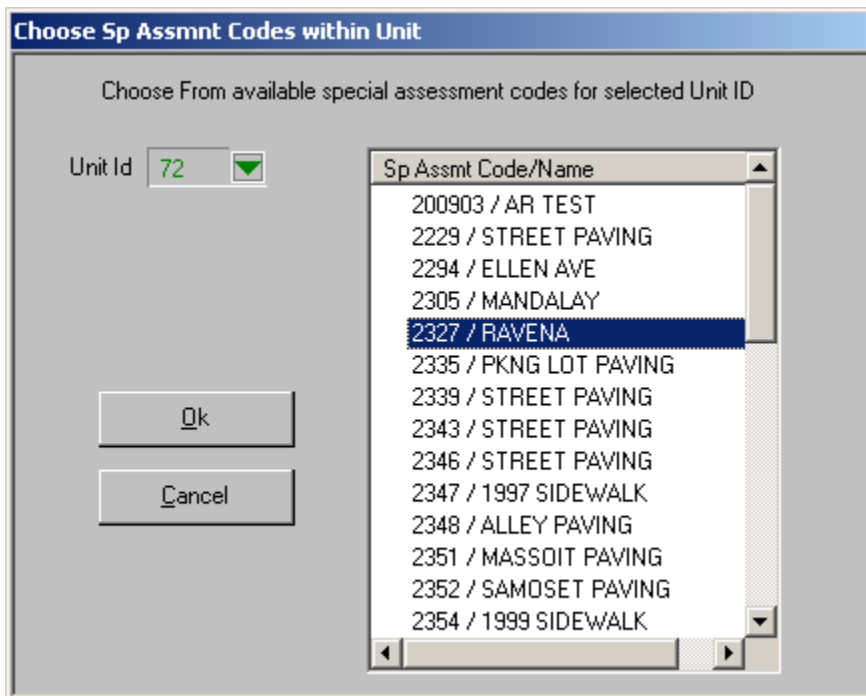


How to calculate current year installment payments

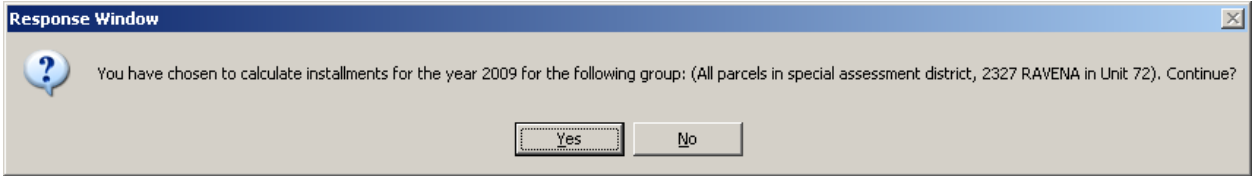
1. Make sure you are in the proper installment year
2. Click Utilities from the tool bar and select the utility called "calculate current year installments. A population pop up box will be displayed. Click Choose Spec Assessment



3. Click continue
4. Choose the special assessment district that you want to calculate installments for and click OK.



5. The following message will appear. Verify you are on the correct installment year and special assessment district. Click Yes.



6. Once Yes has been selected the utility will run to calculate the current year installments (no report will be generated). You can now run a roll or go to individual parcels to see that installments are now calculated for the entire district.

Note: You can also run this same process on a block or on current parcel.

ADMIN DATABASE: TMYSA

Special Assmnt Code: 2335 Name: PKNG LOT PAVING
APR Interest Rate: 6.0000000 # of Years: 14 Edit District Wide Information

Parcel #: 72-25-21-406-016 Owner: FAIR HOLDING TRUST
Assessment: 552.70 ADJ Status: Active
Override Options: Parcel Override Options User #1: 0 User Alpha 1
Amortization Table: Amortization Table User Alpha 2:
Comments:
Miscellaneous Fields:
Multi-Year Snapshot:
Effective Assesmnt: 552.70
Principal Payments: 450.14
Principal Balance: 102.56

Installment # 14

(2009) Installment	108.71
(2009) Payments	0.00
(2009) Balance	108.71

Payoff Calculation: Payoff Calculation
Benefit Entry: Benefit Entry